


Product datasheet

Anti-A RAF (phospho S299) antibody ab112053

1 Image

Overview

Product name	Anti-A RAF (phospho S299) antibody
Description	Rabbit polyclonal to A RAF (phospho S299)
Specificity	ab112053 detects endogenous levels of A RAF only when phosphorylated at serine 299.
Tested applications	Suitable for: IHC-P
Species reactivity	Reacts with: Human Predicted to work with: Mouse, Rat 
Immunogen	Synthetic phosphopeptide derived from Human A RAF around the phosphorylation site of serine 299 (R-D-S ^P -G-Y).
Positive control	Human colon carcinoma tissue.

Properties

Form	Liquid
Storage instructions	Shipped at 4°C. Store at -20°C. Stable for 12 months at -20°C.
Storage buffer	pH: 7.40 Preservative: 0.02% Sodium azide Constituents: 0.88% Sodium chloride, 50% Glycerol, 49% PBS
Purity	Immunogen affinity purified
Purification notes	ab112053 was affinity-purified from Rabbit antiserum by affinity-chromatography using epitope-specific phosphopeptide. The antibody against non-phosphopeptide was removed by chromatography using non-phosphopeptide corresponding to the phosphorylation site.
Clonality	Polyclonal
Isotype	IgG

Applications

Our [Abpromise guarantee](#) covers the use of **ab112053** in the following tested applications.

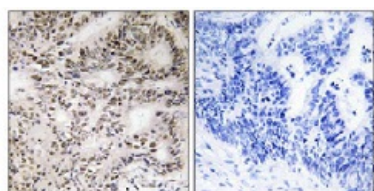
The application notes include recommended starting dilutions; optimal dilutions/concentrations should be determined by the end user.

Application	Abreviews	Notes
IHC-P		1/50 - 1/100. Perform heat mediated antigen retrieval with citrate buffer pH 6 before commencing with IHC staining protocol.

Target

Function	Involved in the transduction of mitogenic signals from the cell membrane to the nucleus.
Tissue specificity	Predominantly in urogenital tissues.
Sequence similarities	Belongs to the protein kinase superfamily. TKL Ser/Thr protein kinase family. RAF subfamily. Contains 1 phorbol-ester/DAG-type zinc finger. Contains 1 protein kinase domain. Contains 1 RBD (Ras-binding) domain.

Images



ab112053 at 1/50 dilution staining A RAF in Paraffin-embedded Human colon carcinoma tissue by Immunohistochemistry. The image on the right is treated with the synthesized phospho peptide.

Immunohistochemistry (Formalin/PFA-fixed paraffin-embedded sections) - A RAF (phospho S299) antibody (ab112053)

Please note: All products are "FOR RESEARCH USE ONLY AND ARE NOT INTENDED FOR DIAGNOSTIC OR THERAPEUTIC USE"

Our Abpromise to you: Quality guaranteed and expert technical support

- Replacement or refund for products not performing as stated on the datasheet
- Valid for 12 months from date of delivery
- Response to your inquiry within 24 hours
- We provide support in Chinese, English, French, German, Japanese and Spanish
- Extensive multi-media technical resources to help you
- We investigate all quality concerns to ensure our products perform to the highest standards

If the product does not perform as described on this datasheet, we will offer a refund or replacement. For full details of the Abpromise, please visit <http://www.abcam.com/abpromise> or contact our technical team.

Terms and conditions

- Guarantee only valid for products bought direct from Abcam or one of our authorized distributors