

Product datasheet

Anti-ACTL7A antibody ab67546

1 Image

Overview

|                            |                                                                 |
|----------------------------|-----------------------------------------------------------------|
| <b>Product name</b>        | Anti-ACTL7A antibody                                            |
| <b>Description</b>         | Mouse polyclonal to ACTL7A                                      |
| <b>Host species</b>        | Mouse                                                           |
| <b>Specificity</b>         | This antibody is reactive against mammalian transfected lysate. |
| <b>Tested applications</b> | <b>Suitable for:</b> WB                                         |
| <b>Species reactivity</b>  | <b>Reacts with:</b> Human                                       |
| <b>Immunogen</b>           | Full length ACTL7A protein (Human)                              |
| <b>Positive control</b>    | ACTL7A transfected 293T cell lysate                             |

Properties

|                             |                                                                                                         |
|-----------------------------|---------------------------------------------------------------------------------------------------------|
| <b>Form</b>                 | Liquid                                                                                                  |
| <b>Storage instructions</b> | Shipped at 4°C. Upon delivery aliquot and store at -20°C or -80°C. Avoid repeated freeze / thaw cycles. |
| <b>Storage buffer</b>       | Preservative: None<br>Constituents: PBS, pH 7.2                                                         |
| <b>Purity</b>               | Protein A purified                                                                                      |
| <b>Clonality</b>            | Polyclonal                                                                                              |
| <b>Isotype</b>              | IgG                                                                                                     |

Applications

Our [Abpromise guarantee](#) covers the use of **ab67546** in the following tested applications.

The application notes include recommended starting dilutions; optimal dilutions/concentrations should be determined by the end user.

| Application | Abreviews | Notes |
|-------------|-----------|-------|
|-------------|-----------|-------|

WB

|                          |                                                                                                  |
|--------------------------|--------------------------------------------------------------------------------------------------|
| <b>Application notes</b> | WB: 1/500 - 1/1000. Detects a band of approximately 49 kDa (predicted molecular weight: 49 kDa). |
|--------------------------|--------------------------------------------------------------------------------------------------|

Detection Antibody Pair.

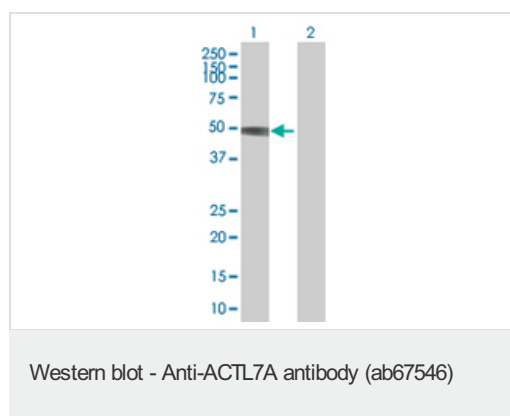
Not yet tested in other applications.

Optimal dilutions/concentrations should be determined by the end user.

## Target

|                              |                                                                                                                             |
|------------------------------|-----------------------------------------------------------------------------------------------------------------------------|
| <b>Relevance</b>             | Tissue specificity: Strongly expressed in testis. Also expressed in other tissues. Similarity: Belongs to the actin family. |
| <b>Cellular localization</b> | Cytoplasm                                                                                                                   |

## Images



**All lanes** : Anti-ACTL7A antibody (ab67546)  
at 1/500 dilution

**Lane 1** : ACTL7A transfected 293T cell lysate

**Lane 2** : Non transfected 293T cell lysate

Lysates/proteins at 25 µg per lane.

### Secondary

**All lanes** : Goat Anti-Mouse IgG (H&L)-HRP  
Conjugate at 1/2500 dilution

**Predicted band size:** 49 kDa

**Observed band size:** 49 kDa

**Please note:** All products are "FOR RESEARCH USE ONLY AND ARE NOT INTENDED FOR DIAGNOSTIC OR THERAPEUTIC USE"

## Our Abpromise to you: Quality guaranteed and expert technical support

- Replacement or refund for products not performing as stated on the datasheet
- Valid for 12 months from date of delivery
- Response to your inquiry within 24 hours
- We provide support in Chinese, English, French, German, Japanese and Spanish
- Extensive multi-media technical resources to help you
- We investigate all quality concerns to ensure our products perform to the highest standards

If the product does not perform as described on this datasheet, we will offer a refund or replacement. For full details of the Abpromise, please visit <http://www.abcam.com/abpromise> or contact our technical team.

## Terms and conditions

---

- Guarantee only valid for products bought direct from Abcam or one of our authorized distributors