

Product datasheet

Anti-ALDH2 antibody ab115198

3 Images

Overview

Product name	Anti-ALDH2 antibody
Description	Rabbit polyclonal to ALDH2
Host species	Rabbit
Tested applications	Suitable for: WB, ELISA, IHC-P, Flow Cyt
Species reactivity	Reacts with: Human
Immunogen	Synthetic peptide conjugated to KLH, corresponding to amino acids from the N terminal region of ALDH2.
Positive control	Human Liver tissue; 293 cell lysate, transiently transfected with the ALDH2 gene.

Properties

Form	Liquid
Storage instructions	Shipped at 4°C. Store at +4°C short term (1-2 weeks). Upon delivery aliquot. Store at -20°C long term.
Storage buffer	Preservative: 0.09% Sodium azide Constituent: 99% PBS
Purity	Protein A purified
Clonality	Polyclonal
Isotype	IgG

Applications

Our [Abpromise guarantee](#) covers the use of **ab115198** in the following tested applications.

The application notes include recommended starting dilutions; optimal dilutions/concentrations should be determined by the end user.

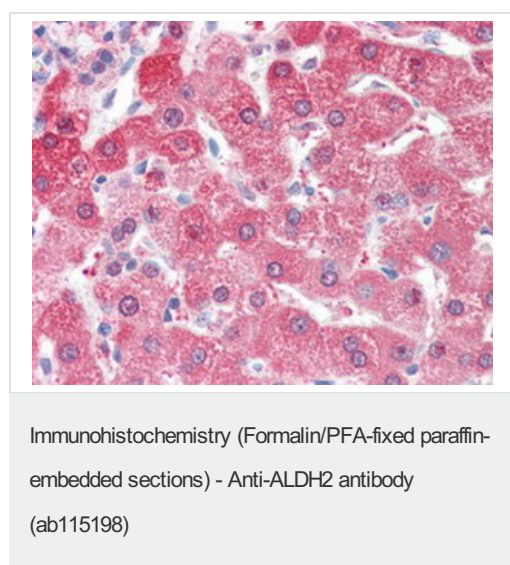
Application	Abreviews	Notes
WB		1/50 - 1/100. Predicted molecular weight: 56 kDa.
ELISA		1/1000.

Application	Abreviews	Notes
IHC-P		Use a concentration of 10 µg/ml. Perform heat mediated antigen retrieval with citrate buffer pH 6 before commencing with IHC staining protocol.
Flow Cyt		Use at an assay dependent concentration. ab171870 - Rabbit polyclonal IgG, is suitable for use as an isotype control with this antibody.

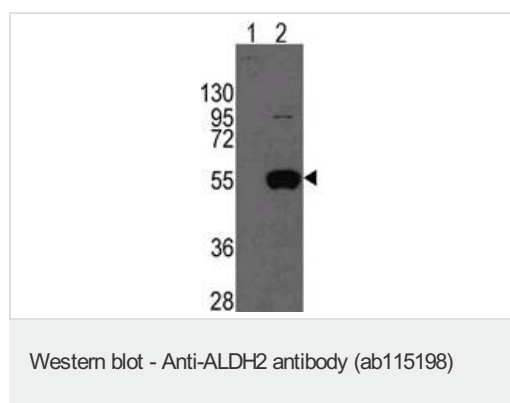
Target

Pathway	Alcohol metabolism; ethanol degradation; acetate from ethanol: step 2/2.
Sequence similarities	Belongs to the aldehyde dehydrogenase family.
Cellular localization	Mitochondrion matrix.

Images



ab115198 at 10 µg/ml staining ALDH2
Formalin-fixed, Paraffin-embedded Human Liver tissue by Immunohistochemistry followed by biotinylated secondary antibody, alkaline phosphatase-streptavidin and chromogen.



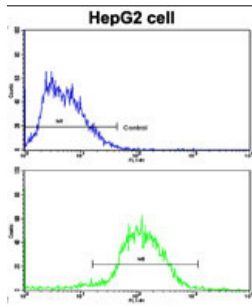
All lanes : Anti-ALDH2 antibody (ab115198)
at 1/50 dilution

Lane 1 : 293 cell lysate, non-transfected

Lane 2 : 293 cell lysate, transiently transfected with ALDH2 gene

Lysates/proteins at 2 µg per lane.

Predicted band size: 56 kDa



Flow Cytometry - Anti-ALDH2 antibody (ab115198)

Flow cytometric analysis of HepG2 cells, staining ALDH2 with ab115198 (bottom histogram), compared to a negative control cell (top histogram). A FITC-conjugated goat-anti-rabbit IgG was used as the secondary antibody.

Please note: All products are "FOR RESEARCH USE ONLY AND ARE NOT INTENDED FOR DIAGNOSTIC OR THERAPEUTIC USE"

Our Abpromise to you: Quality guaranteed and expert technical support

- Replacement or refund for products not performing as stated on the datasheet
- Valid for 12 months from date of delivery
- Response to your inquiry within 24 hours
- We provide support in Chinese, English, French, German, Japanese and Spanish
- Extensive multi-media technical resources to help you
- We investigate all quality concerns to ensure our products perform to the highest standards

If the product does not perform as described on this datasheet, we will offer a refund or replacement. For full details of the Abpromise, please visit <http://www.abcam.com/abpromise> or contact our technical team.

Terms and conditions

- Guarantee only valid for products bought direct from Abcam or one of our authorized distributors