

Product datasheet

Anti-ANGPT1 + ANGPT2 antibody ab65835

12 References 4 Images

Overview

Product name	Anti-ANGPT1 + ANGPT2 antibody
Description	Rabbit polyclonal to ANGPT1 + ANGPT2
Tested applications	Suitable for: ICC/IF, IHC-Fr, WB, IHC-P
Species reactivity	Reacts with: Mouse, Rat, Human
Immunogen	A synthetic peptide corresponding to a sequence mapping near the C-terminus of human Angiopoietin 2, identical to the related rat and mouse sequence. (Peptide available as ab98299 .)
	Run BLAST with Run BLAST with
Positive control	Human placenta tissue, rat brain lysate.

Properties

Form	Liquid
Storage instructions	Shipped at 4°C. Upon delivery aliquot and store at -20°C. Avoid freeze / thaw cycles.
Storage buffer	Preservative: 0.02% Sodium Azide, 0.01% Thimerosal (merthiolate) Constituents: 2.5% BSA, 0.45% Sodium chloride, 0.1% Dibasic monohydrogen sodium phosphate
Purity	Immunogen affinity purified
Clonality	Polyclonal
Isotype	IgG

Applications

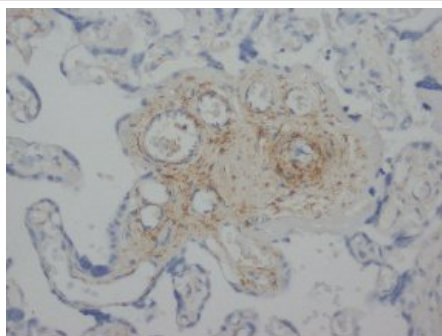
Our [Abpromise guarantee](#) covers the use of **ab65835** in the following tested applications.

The application notes include recommended starting dilutions; optimal dilutions/concentrations should be determined by the end user.

Application	Abreviews	Notes
ICC/IF		Use a concentration of 1 µg/ml.
IHC-Fr		Use at an assay dependent concentration. PubMed: 20562294

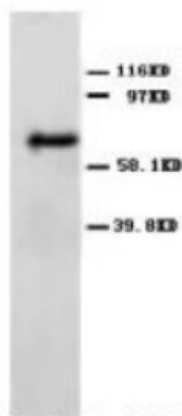
Application	Abreviews	Notes
WB		Use a concentration of 1 - 2 µg/ml. Detects a band of approximately 65 kDa (predicted molecular weight: 57 kDa).
IHC-P		Use at an assay dependent concentration. PubMed: 21439064

Images



This image shows human placental tissue stained with ab65835 at 2µg/ml.

Immunohistochemistry (Formalin/PFA-fixed paraffin-embedded sections) - Anti-ANGPT1 + ANGPT2 antibody (ab65835)

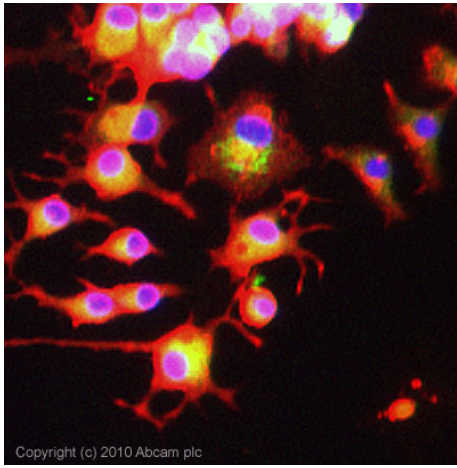


Anti-ANGPT1 + ANGPT2 antibody (ab65835)
at 2 µg/ml + rat brain tissue lysate

Predicted band size : 57 kDa

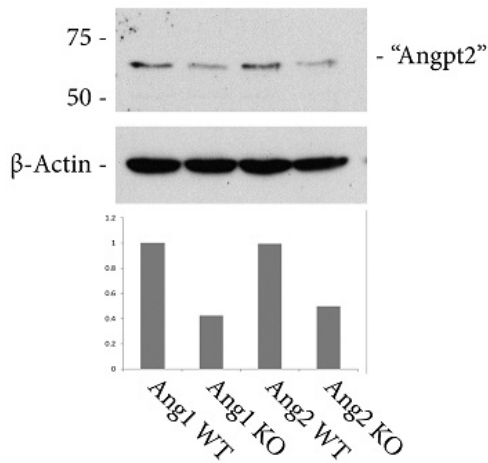
Observed band size : 65 kDa

Western blot - Anti-ANGPT1 + ANGPT2 antibody (ab65835)



Immunocytochemistry/ Immunofluorescence - Anti-ANGPT1 + ANGPT2 antibody (ab65835)

ICC/IF image of ab65835 stained PC12 cells. The cells were 100% methanol fixed (5 min) and then incubated in 1%BSA / 10% normal goat serum / 0.3M glycine in 0.1% PBS-Tween for 1h to permeabilise the cells and block non-specific protein-protein interactions. The cells were then incubated with the antibody (ab65835, 1µg/ml) overnight at +4°C. The secondary antibody (green) was Alexa Fluor® 488 goat anti-rabbit IgG (H+L) used at a 1/1000 dilution for 1h. Alexa Fluor® 594 WGA was used to label plasma membranes (red) at a 1/200 dilution for 1h. DAPI was used to stain the cell nuclei (blue) at a concentration of 1.43µM.



Predicted band size : 57 kDa

Western blot - Anti-ANGPT1 + ANGPT2 antibody (ab65835)

Please note: All products are "FOR RESEARCH USE ONLY AND ARE NOT INTENDED FOR DIAGNOSTIC OR THERAPEUTIC USE"

Our Abpromise to you: Quality guaranteed and expert technical support

- Replacement or refund for products not performing as stated on the datasheet
- Valid for 12 months from date of delivery
- Response to your inquiry within 24 hours
- We provide support in Chinese, English, French, German, Japanese and Spanish
- Extensive multi-media technical resources to help you
- We investigate all quality concerns to ensure our products perform to the highest standards

If the product does not perform as described on this datasheet, we will offer a refund or replacement. For full details of the Abpromise, please visit <http://www.abcam.com/abpromise> or contact our technical team.

Terms and conditions

- Guarantee only valid for products bought direct from Abcam or one of our authorized distributors