

Product datasheet

Anti-ARF5 antibody [EPR7050] ab125023

Recombinant **RabMAB**

3 Images

Overview

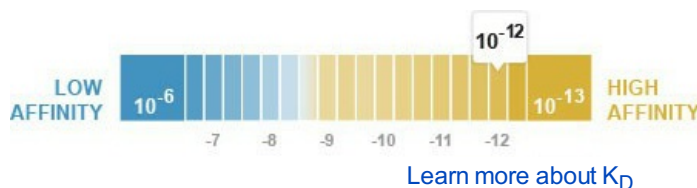
Product name	Anti-ARF5 antibody [EPR7050]
Description	Rabbit monoclonal [EPR7050] to ARF5
Host species	Rabbit
Tested applications	Suitable for: WB, Flow Cyt Unsuitable for: ICC, IHC-P or IP
Species reactivity	Reacts with: Mouse, Rat, Human
Immunogen	Synthetic peptide within Human ARF5 aa 150-250 (C terminal). The exact sequence is proprietary.
Positive control	HeLa and Molt4 cell lysates; HeLa cells
General notes	

Our RabMAB[®] technology is a patented hybridoma-based technology for making rabbit monoclonal antibodies. For details on our patents, please refer to [RabMab[®] patents](#)

This product is a recombinant rabbit monoclonal antibody.

Properties

Form	Liquid
Storage instructions	Shipped at 4°C. Store at -20°C. Stable for 12 months at -20°C.
Dissociation constant (K_D)	K _D = 2.60 x 10 ⁻¹² M



Storage buffer	pH: 7.20 Preservative: 0.01% Sodium azide Constituents: 49% PBS, 50% Glycerol, 0.05% BSA
Purity	Tissue culture supernatant

Clonality	Monoclonal
Clone number	EPR7050
Isotype	IgG

Applications

Our [Abpromise guarantee](#) covers the use of **ab125023** in the following tested applications.

The application notes include recommended starting dilutions; optimal dilutions/concentrations should be determined by the end user.

Application	Abreviews	Notes
WB		1/1000 - 1/10000. Detects a band of approximately 18 kDa (predicted molecular weight: 20 kDa).
Flow Cyt		1/10 - 1/100. ab172730 - Rabbit monoclonal IgG, is suitable for use as an isotype control with this antibody.

Application notes Is unsuitable for ICC, IHC-P or IP.

Target

Function GTP-binding protein that functions as an allosteric activator of the cholera toxin catalytic subunit, an ADP-ribosyltransferase. Involved in protein trafficking; may modulate vesicle budding and uncoating within the Golgi apparatus.

Sequence similarities Belongs to the small GTPase superfamily. Arf family.

Cellular localization Golgi apparatus. Cytoplasm > perinuclear region.

Images



Western blot - Anti-ARF5 antibody [EPR7050]
(ab125023)

All lanes : Anti-ARF5 antibody [EPR7050]
(ab125023) at 1/1000 dilution

Lane 1 : HeLa cell lysate

Lane 2 : Molt4 cell lysate

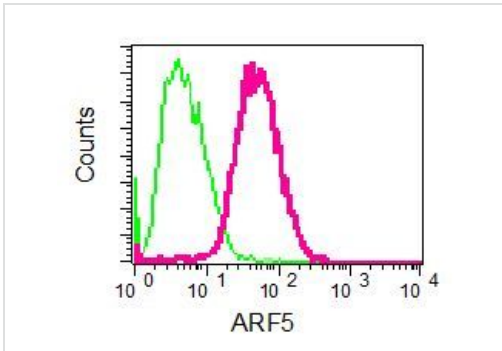
Lysates/proteins at 10 µg per lane.

Secondary

All lanes : HRP labelled goat anti-rabbit at
1/2000 dilution

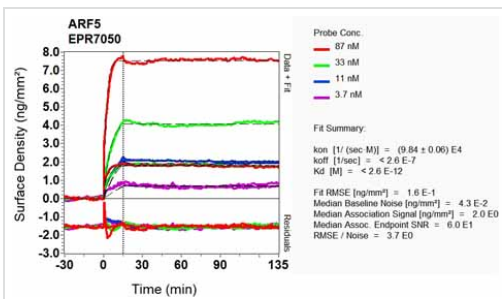
Predicted band size: 20 kDa

Observed band size: 18 kDa



Flow Cytometry - Anti-ARF5 antibody [EPR7050]
(ab125023)

Flow cytometric analysis of permeabilized HeLa cells using ab125023 at a 1/10 dilution (red) or a rabbit IgG (negative) (green).



Other - Anti-ARF5 antibody [EPR7050] (ab125023)

Equilibrium dissociation constant (K_D)

Learn more about K_D

[Click here to learn more about \$K_D\$](#)

Please note: All products are "FOR RESEARCH USE ONLY AND ARE NOT INTENDED FOR DIAGNOSTIC OR THERAPEUTIC USE"

Our Promise to you: Quality guaranteed and expert technical support

- Replacement or refund for products not performing as stated on the datasheet

- Valid for 12 months from date of delivery
- Response to your inquiry within 24 hours

- We provide support in Chinese, English, French, German, Japanese and Spanish
- Extensive multi-media technical resources to help you
- We investigate all quality concerns to ensure our products perform to the highest standards

If the product does not perform as described on this datasheet, we will offer a refund or replacement. For full details of the Abpromise, please visit <http://www.abcam.com/abpromise> or contact our technical team.

Terms and conditions

- Guarantee only valid for products bought direct from Abcam or one of our authorized distributors