


Product datasheet

Anti-ARFGEF2 antibody ab72420

3 Images

Overview

Product name	Anti-ARFGEF2 antibody
Description	Rabbit polyclonal to ARFGEF2
Host species	Rabbit
Tested applications	Suitable for: WB, IP, IHC-P
Species reactivity	Reacts with: Human Predicted to work with: Chimpanzee, Rhesus monkey, Gorilla, Orangutan 
Immunogen	Synthetic peptide corresponding to a region between residues 300 and 350 of human ARFGEF2 (NP_006411.1)
Positive control	HeLa whole cell lysate.

Properties

Form	Liquid
Storage instructions	Shipped at 4°C. Upon delivery aliquot and store at -20°C. Avoid freeze / thaw cycles.
Storage buffer	Preservative: 0.09% Sodium Azide Constituents: 0.1% BSA, Tris buffered saline
Purity	Immunogen affinity purified
Purification notes	ab72420 was affinity purified using an epitope specific to ARFGEF2 immobilized on solid support.
Clonality	Polyclonal
Isotype	IgG

Applications

Our [Abpromise guarantee](#) covers the use of **ab72420** in the following tested applications.

The application notes include recommended starting dilutions; optimal dilutions/concentrations should be determined by the end user.

Application	Abreviews	Notes
WB		1/2000 - 1/10000. Detects a band of approximately 202 kDa (predicted molecular weight: 202 kDa).

Application	Abreviews	Notes
IP		Use at 2-5 µg/mg of lysate.
IHC-P		1/100 - 1/500. Perform heat mediated antigen retrieval with citrate buffer pH 6 before commencing with IHC staining protocol.

Target

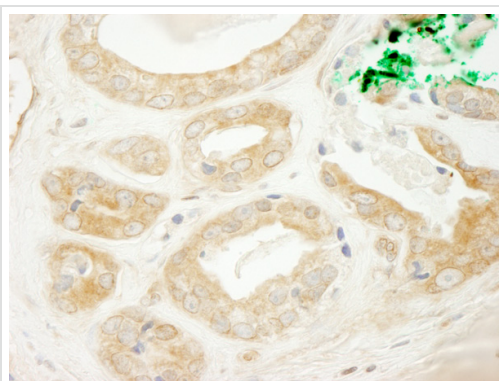
Relevance

ADP-ribosylation factors (ARFs) play an important role in intracellular vesicular trafficking. ARFGEF2 promotes guanine-nucleotide exchange on ARF1, ARF5 and ARF6 and the activation of ARF1/ARF5/ARF6 through replacement of GDP with GTP. It contains a Sec7 domain, which may be responsible for its guanine-nucleotide exchange activity and also brefeldin A inhibition.

Cellular localization

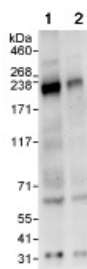
Cytoplasm. Membrane. Golgi apparatus. Cytoplasm › perinuclear region. Golgi apparatus › trans-Golgi network By similarity. Endosome By similarity. Cytoplasm › cytoskeleton › microtubule organizing center › centrosome. Cell projection › dendrite By similarity. Cytoplasmic vesicle By similarity. Cell junction › synapse By similarity. Cytoplasm › cytoskeleton By similarity. Note: Translocates from cytoplasm to membranes upon cAMP treatment. Localized in recycling endosomes.

Images



Immunohistochemistry (Formalin/PFA-fixed paraffin-embedded sections) analysis of human prostate carcinoma tissue labelling ARFGEF2 with ab72420 at 1/200 (1µg/ml). Detection: DAB.

Immunohistochemistry (Formalin/PFA-fixed paraffin-embedded sections) - Anti-ARFGEF2 antibody (ab72420)



Western blot - ARFGEF2 antibody (ab72420)

All lanes : Anti-ARFGEF2 antibody (ab72420) at 0.04 µg/ml

Lane 1 : HeLa whole cell lysate at 50 µg

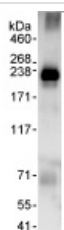
Lane 2 : HeLa whole cell lysate at 15 µg

Developed using the ECL technique.

Predicted band size: 202 kDa

Observed band size: 202 kDa

Exposure time: 3 minutes



Immunoprecipitation - ARFGEF2 antibody (ab72420)

Detection of ARFGEF2 by Western Blot of Immunoprecipitate.

ab72420 at 1µg/ml staining ARFGEF2 in HeLa whole cell lysate immunoprecipitated using ab72420 at 3µg/mg lysate (1 mg/IP; 20% of IP loaded/lane).

Detection: Chemiluminescence with exposure time of 30 seconds.

Please note: All products are "FOR RESEARCH USE ONLY AND ARE NOT INTENDED FOR DIAGNOSTIC OR THERAPEUTIC USE"

Our Abpromise to you: Quality guaranteed and expert technical support

- Replacement or refund for products not performing as stated on the datasheet
- Valid for 12 months from date of delivery
- Response to your inquiry within 24 hours
- We provide support in Chinese, English, French, German, Japanese and Spanish
- Extensive multi-media technical resources to help you
- We investigate all quality concerns to ensure our products perform to the highest standards

If the product does not perform as described on this datasheet, we will offer a refund or replacement. For full details of the Abpromise, please visit <http://www.abcam.com/abpromise> or contact our technical team.

Terms and conditions

- Guarantee only valid for products bought direct from Abcam or one of our authorized distributors