

Product datasheet

Anti-ATL3 antibody ab104262

3 References 3 Images

Overview

Product name	Anti-ATL3 antibody
Description	Rabbit polyclonal to ATL3
Host species	Rabbit
Tested applications	Suitable for: ICC/IF, WB
Species reactivity	Reacts with: Mouse, Hamster, Human
Immunogen	Synthetic peptide corresponding to a region within internal sequence amino acids 230-260 of Human ATL3, conjugated to KLH.
Positive control	Mouse liver tissue lysates and CHO cell line lysates This antibody gave a positive result when used in the following formaldehyde fixed cell lines: PC3.

Properties

Form	Liquid
Storage instructions	Shipped at 4°C. Store at 4°C (up to 6 months). Store at -20°C long term.
Storage buffer	Preservative: 0.09% Sodium Azide Constituents: PBS
Purity	Immunogen affinity purified
Purification notes	ab104262 is purified through a protein A column, followed by peptide affinity purification.
Clonality	Polyclonal
Isotype	IgG

Applications

Our [Abpromise guarantee](#) covers the use of **ab104262** in the following tested applications.

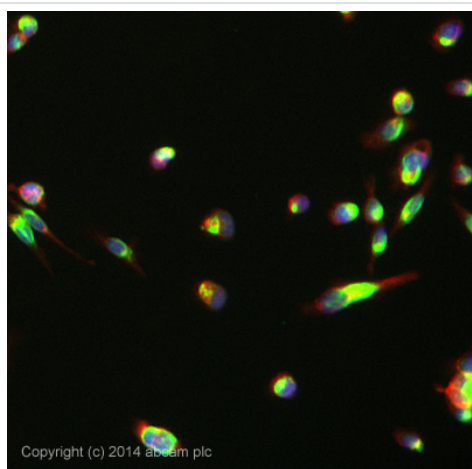
The application notes include recommended starting dilutions; optimal dilutions/concentrations should be determined by the end user.

Application	Abreviews	Notes
ICC/IF		Use at an assay dependent concentration. PubMed: 23151802
WB		1/100 - 1/500. Predicted molecular weight: 61 kDa.

Target

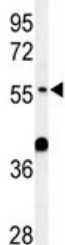
Function	GTPase tethering membranes through formation of trans-homooligomer and mediating homotypic fusion of endoplasmic reticulum membranes. Functions in endoplasmic reticulum tubular network biogenesis.
Tissue specificity	Expressed in peripheral tissues (at protein level).
Sequence similarities	Belongs to the GBP family. Atlastin subfamily.
Cellular localization	Endoplasmic reticulum membrane.

Images



Immunocytochemistry/ Immunofluorescence - Anti-ATL3 antibody (ab104262)

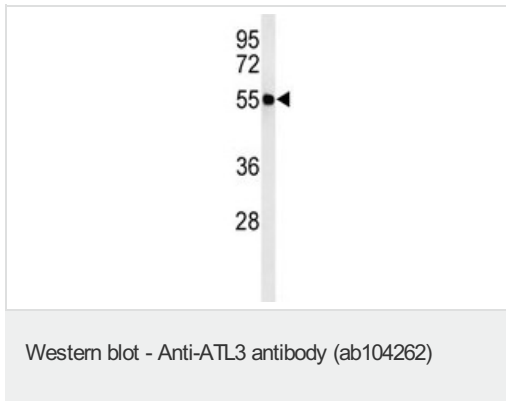
ICC/IF image of ab104262 stained PC3 cells. The cells were 4% formaldehyde fixed (10 min) and then incubated in 1%BSA / 10% normal goat serum / 0.3M glycine in 0.1% PBS-Tween for 1h to permeabilise the cells and block non-specific protein-protein interactions. The cells were then incubated with the antibody ab104262 at 0.2µg/ml overnight at +4°C. The secondary antibody (pseudo-colored green) was Alexa Fluor® 488 goat anti- rabbit ([ab150081](#)) IgG (H+L) preadsorbed, used at a 1/1000 dilution for 1h. Alexa Fluor® 594 WGA was used to label plasma membranes (pseudo-colored red) at a 1/200 dilution for 1h at room temperature. DAPI was used to stain the cell nuclei (pseudo-colored blue) at a concentration of 1.43µM for 1 hour at room temperature.



Western blot - Anti-ATL3 antibody (ab104262)

Anti-ATL3 antibody (ab104262) at 1/100 dilution + Mouse liver tissue lysate at 35 µg

Predicted band size: 61 kDa



Anti-ATL3 antibody (ab104262) at 1/100
dilution + CHO cell lysate at 35 µg

Predicted band size: 61 kDa

Please note: All products are "FOR RESEARCH USE ONLY AND ARE NOT INTENDED FOR DIAGNOSTIC OR THERAPEUTIC USE"

Our Abpromise to you: Quality guaranteed and expert technical support

- Replacement or refund for products not performing as stated on the datasheet
- Valid for 12 months from date of delivery
- Response to your inquiry within 24 hours
- We provide support in Chinese, English, French, German, Japanese and Spanish
- Extensive multi-media technical resources to help you
- We investigate all quality concerns to ensure our products perform to the highest standards

If the product does not perform as described on this datasheet, we will offer a refund or replacement. For full details of the Abpromise, please visit <http://www.abcam.com/abpromise> or contact our technical team.

Terms and conditions

- Guarantee only valid for products bought direct from Abcam or one of our authorized distributors