

## Product datasheet

# Anti-ATM (phospho S1981) antibody [EP1890Y] ab81292

Recombinant RabMAb

★★★★★ 15 Abreviews 111 References 11 Images

### Overview

<b>Product name</b>	Anti-ATM (phospho S1981) antibody [EP1890Y]
<b>Description</b>	Rabbit monoclonal [EP1890Y] to ATM (phospho S1981)
<b>Tested applications</b>	<b>Suitable for:</b> WB, IHC-P, IP, Flow Cyt <b>Unsuitable for:</b> ICC/IF
<b>Species reactivity</b>	<b>Reacts with:</b> Human
<b>Immunogen</b>	Synthetic peptide (the amino acid sequence is considered to be commercially sensitive) corresponding to Human ATM (phospho S1981).
<b>Positive control</b>	WB: HEK293 cell lysate treated with doxorubicin. IHC-P: Human gastric carcinoma, breast carcinoma, tonsil, cervical carcinoma, hepatocellular carcinoma and endometrial carcinoma tissues and mouse endometrium tissue. IP: HEK293 cell lysate treated with doxorubicin. FC: HepG2 cells
<b>General notes</b>	This product is a recombinant rabbit monoclonal antibody.

**We are constantly working hard to ensure we provide our customers with best in class antibodies. As a result of this work we are pleased to now offer this antibody in purified format. We are in the process of updating our datasheets. The purified format is designated 'PUR' on our product labels. If you have any questions regarding this update, please contact our Scientific Support team.**

A trial size is available to purchase for this antibody.

Rat: We have preliminary internal testing data to indicate this antibody may not react with these species. Please contact us for more information.

Alternative versions available:

[Anti-ATM \(phospho S1981\) antibody \(HRP\) \[EP1890Y\] \(ab193607\)](#)

Our RabMAb<sup>®</sup> technology is a patented hybridoma-based technology for making rabbit monoclonal antibodies. For details on our patents, please refer to [RabMAb<sup>®</sup> patents](#)

### Properties

**Form** Liquid

<b>Storage instructions</b>	Shipped at 4°C. Store at +4°C short term (1-2 weeks). Upon delivery aliquot. Store at -20°C. Avoid freeze / thaw cycle.
<b>Storage buffer</b>	pH: 7.20 Preservative: 0.01% Sodium azide Constituents: 59% PBS, 40% Glycerol, 0.05% BSA
<b>Purity</b>	Protein A purified
<b>Clonality</b>	Monoclonal
<b>Clone number</b>	EP1890Y
<b>Isotype</b>	IgG

## Applications

Our [Abpromise guarantee](#) covers the use of **ab81292** in the following tested applications.

The application notes include recommended starting dilutions; optimal dilutions/concentrations should be determined by the end user.

Application	Abreviews	Notes
WB	★★★★★	1/50000. Detects a band of approximately 370 kDa (predicted molecular weight: 351 kDa). <b>For unpurified use at 1/5000 - 1/10000.</b>
IHC-P		1/70 - 1/250. Perform heat mediated antigen retrieval with Tris/EDTA buffer pH 9.0 before commencing with IHC staining protocol. See protocols (link: <a href="http://www.abcam.com/protocols/ihc-antigen-retrieval-protocol">http://www.abcam.com/protocols/ihc-antigen-retrieval-protocol</a> ).
IP		1/30 - 1/40.
Flow Cyt		1/60.

**Application notes** Is unsuitable for ICC/IF.

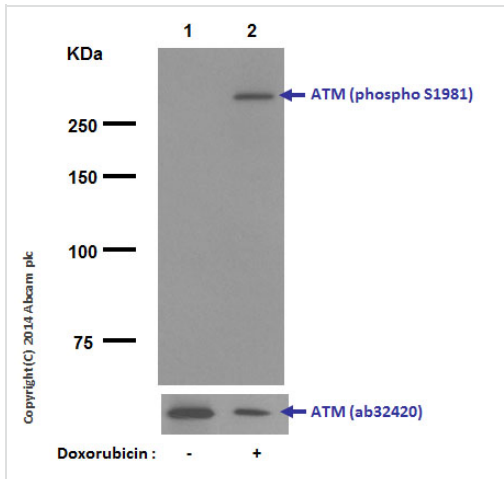
## Target

**Function** Serine/threonine protein kinase which activates checkpoint signaling upon double strand breaks (DSBs), apoptosis and genotoxic stresses such as ionizing ultraviolet A light (UVA), thereby acting as a DNA damage sensor. Recognizes the substrate consensus sequence [ST]-Q. Phosphorylates 'Ser-139' of histone variant H2AX/H2AFX at double strand breaks (DSBs), thereby regulating DNA damage response mechanism. Also plays a role in pre-B cell allelic exclusion, a process leading to expression of a single immunoglobulin heavy chain allele to enforce clonality and monospecific recognition by the B-cell antigen receptor (BCR) expressed on individual B lymphocytes. After the introduction of DNA breaks by the RAG complex on one immunoglobulin allele, acts by mediating a repositioning of the second allele to pericentromeric heterochromatin, preventing accessibility to the RAG complex and recombination of the second allele. Also involved in signal transduction and cell cycle control. May function as a tumor suppressor. Necessary for activation of ABL1 and SAPK. Phosphorylates p53/TP53, FANCD2, NFKBIA, BRCA1, CTIP, nibrin (NBN), TERF1, RAD9 and DCLRE1C. May play a role in vesicle and/or protein transport. Could play a role in T-cell development, gonad and neurological function. Plays a role in replication-dependent histone mRNA degradation. Binds DNA ends.

<b>Tissue specificity</b>	Found in pancreas, kidney, skeletal muscle, liver, lung, placenta, brain, heart, spleen, thymus, testis, ovary, small intestine, colon and leukocytes.
<b>Involvement in disease</b>	<p>Defects in ATM are the cause of ataxia telangiectasia (AT) [MIM:208900]; also known as Louis-Bar syndrome, which includes four complementation groups: A, C, D and E. This rare recessive disorder is characterized by progressive cerebellar ataxia, dilation of the blood vessels in the conjunctiva and eyeballs, immunodeficiency, growth retardation and sexual immaturity. AT patients have a strong predisposition to cancer; about 30% of patients develop tumors, particularly lymphomas and leukemias. Cells from affected individuals are highly sensitive to damage by ionizing radiation and resistant to inhibition of DNA synthesis following irradiation.</p> <p>Note=Defects in ATM contribute to T-cell acute lymphoblastic leukemia (TALL) and T-prolymphocytic leukemia (TPLL). TPLL is characterized by a high white blood cell count, with a predominance of prolymphocytes, marked splenomegaly, lymphadenopathy, skin lesions and serous effusion. The clinical course is highly aggressive, with poor response to chemotherapy and short survival time. TPLL occurs both in adults as a sporadic disease and in younger AT patients.</p> <p>Note=Defects in ATM contribute to B-cell non-Hodgkin lymphomas (BNHL), including mantle cell lymphoma (MCL).</p> <p>Note=Defects in ATM contribute to B-cell chronic lymphocytic leukemia (BCLL). BCLL is the commonest form of leukemia in the elderly. It is characterized by the accumulation of mature CD5+ B lymphocytes, lymphadenopathy, immunodeficiency and bone marrow failure.</p>
<b>Sequence similarities</b>	<p>Belongs to the PI3/PI4-kinase family. ATM subfamily.</p> <p>Contains 1 FAT domain.</p> <p>Contains 1 FATC domain.</p> <p>Contains 1 PI3K/PI4K domain.</p>
<b>Domain</b>	The FATC domain is required for interaction with KAT5.
<b>Post-translational modifications</b>	<p>Phosphorylated by NUAK1/ARK5. Autophosphorylation on Ser-367, Ser-1893, Ser-1981 correlates with DNA damage-mediated activation of the kinase.</p> <p>Acetylation, on DNA damage, is required for activation of the kinase activity, dimer-monomer transition, and subsequent autophosphorylation on Ser-1981. Acetylated in vitro by KAT5/TIP60.</p>
<b>Cellular localization</b>	Nucleus. Cytoplasmic vesicle. Primarily nuclear. Found also in endocytic vesicles in association with beta-adaptin.

---

## Images



Western blot - Anti-ATM (phospho S1981) antibody [EP1890Y] (ab81292)

**All lanes :** Anti-ATM (phospho S1981) antibody [EP1890Y] (ab81292) at 1/50000 dilution (purified)

**Lane 1 :** HEK293 cell lysate, untreated

**Lane 2 :** HEK293 cell lysate, treated with Doxorubicin

Lysates/proteins at 10 µg per lane.

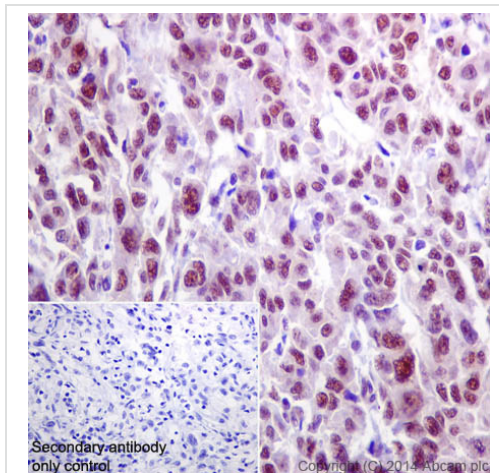
### Secondary

Peroxidase conjugated goat anti-rabbit IgG (H+L) at 1/1000 dilution

**Predicted band size :** 351 kDa

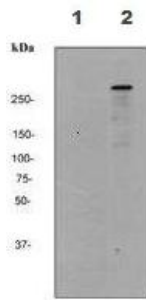
**Observed band size :** 370 kDa

Blocking and dilution buffer: 5% NFDm/TBST.



Immunohistochemistry (Formalin/PFA-fixed paraffin-embedded sections) - Anti-ATM (phospho S1981) antibody [EP1890Y] (ab81292)

Immunohistochemistry (Formalin/PFA-fixed paraffin-embedded sections) analysis of human hepatocellular carcinoma tissue labelling ATM (phospho S1981) with purified ab81292 at 1/70. Heat mediated antigen retrieval was performed using Tris/EDTA buffer pH 9. [ab97051](#), a HRP-conjugated goat anti-rabbit IgG (H+L) was used as the secondary antibody (1/500). Negative control using PBS instead of primary antibody. Counterstained with hematoxylin.



Western blot - Anti-ATM (phospho S1981) antibody [EP1890Y] (ab81292)

**All lanes :** Anti-ATM (phospho S1981) antibody [EP1890Y] (ab81292) at 1/10000 dilution (unpurified)

**Lane 1 :** HEK293 cell lysates untreated

**Lane 2 :** HEK293 cell lysates treated with doxorubicin.

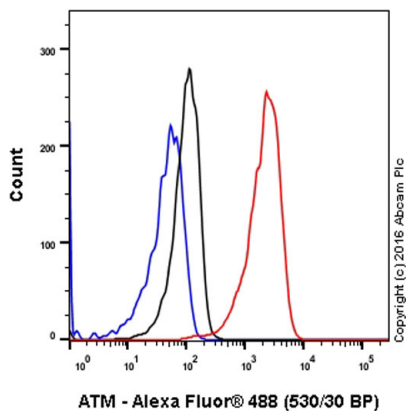
Lysates/proteins at 10 µg per lane.

### Secondary

Goat Anti-Rabbit IgG H&L (HRP) (ab6721) at 1/2000 dilution

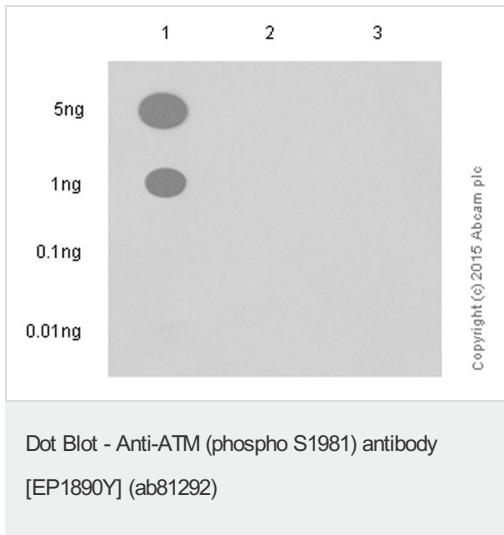
**Predicted band size :** 351 kDa

**Observed band size :** 370 kDa



Flow Cytometry - Anti-ATM (phospho S1981) antibody [EP1890Y] (ab81292)

Flow Cytometry analysis of HepG2 (human hepatocellular carcinoma) cells labeling ATM (phospho S1981) with purified ab81292 at 1/60 dilution (10ug/mL) (red). Cells were fixed with 4% paraformaldehyde and permeabilised with 90% methanol. A Goat anti rabbit IgG (Alexa Fluor®488) at 1/2000 dilution was used as the secondary antibody. Rabbit monoclonal IgG (Black) was used as the isotype control, cells without incubation with primary antibody and secondary antibody (Blue) was used as the unlabeled control.

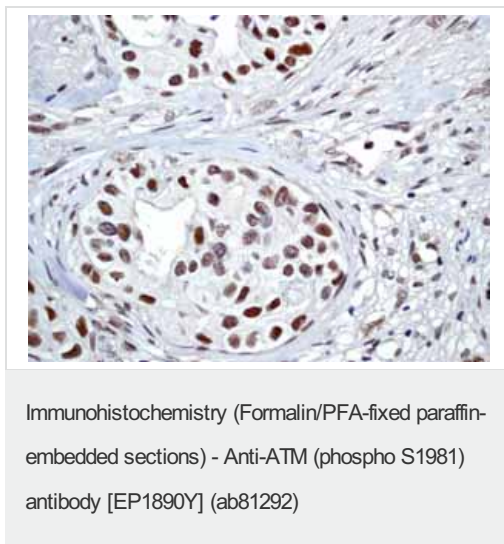


Dot blot analysis of ATM peptides using ab81292 at 1/000 dilution followed by Goat Anti-Rabbit IgG, (H+L), Peroxidase conjugated secondary antibody (ab97051) at 1/100000 dilution. Blocking and diluting buffer was 5% NFDm/TBST, exposure time 3 minutes.

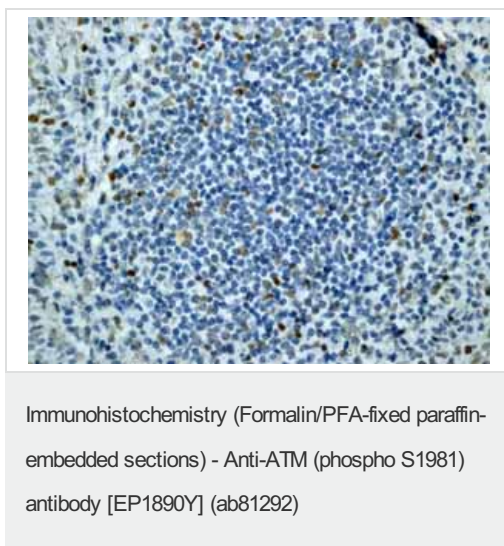
Lane 1: ATM (pS1981) phospho peptide

Lane 2: ATM non-phospho peptide

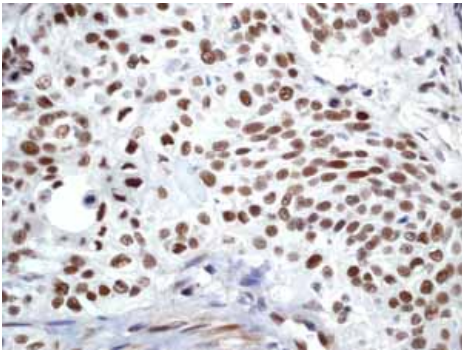
Lane 3: ATM (pS428) phospho peptide



Immunohistochemistry (Formalin/PFA-fixed paraffin-embedded sections) analysis of human breast carcinoma tissue labelling ATM with unpurified ab81292.

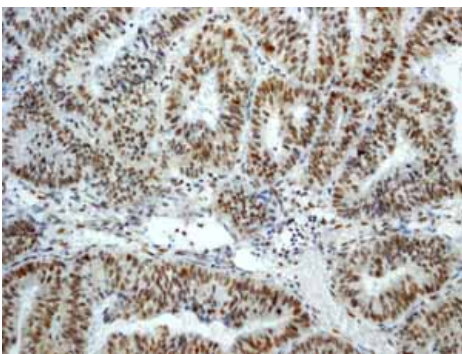


Immunohistochemistry (Formalin/PFA-fixed paraffin-embedded sections) analysis of normal human tonsil tissue labelling ATM with unpurified ab81292.



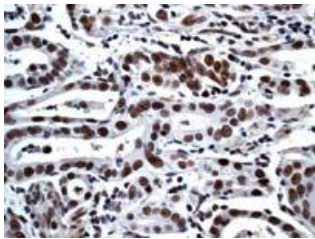
Immunohistochemistry (Formalin/PFA-fixed paraffin-embedded sections) - Anti-ATM (phospho S1981) antibody [EP1890Y] (ab81292)

Immunohistochemistry (Formalin/PFA-fixed paraffin-embedded sections) analysis of human cervical carcinoma tissue labelling ATM with unpurified ab81292.



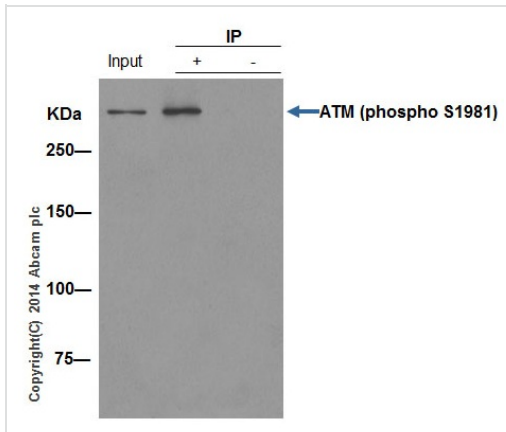
Immunohistochemistry (Formalin/PFA-fixed paraffin-embedded sections) - Anti-ATM (phospho S1981) antibody [EP1890Y] (ab81292)

Immunohistochemistry (Formalin/PFA-fixed paraffin-embedded sections) analysis of human endometrial carcinoma tissue labelling ATM with unpurified ab81292.



Immunohistochemistry (Formalin/PFA-fixed paraffin-embedded sections) - Anti-ATM (phospho S1981) antibody [EP1890Y] (ab81292)

Immunohistochemistry (Formalin/PFA-fixed paraffin-embedded sections) analysis of human gastric carcinoma tissue labelling ATM with unpurified ab81292 at a 1/100 dilution.



Immunoprecipitation - Anti-ATM (phospho S1981) antibody [EP1890Y] (ab81292)

ab81292 (purified) at 1/30 immunoprecipitating RAB27A in 293 + doxorubicin whole cell lysate, 10ug (Lane 1). Lane 2 - Rabbit monoclonal IgG (ab172730) instead of ab81292 in HeLa whole cell lysate. For western blotting, a HRP-conjugated anti-rabbit IgG, specific to the non-reduced form of IgG was used as the secondary antibody (1/1500).

Blocking buffer and concentration: 5% NFDm/TBST.

Diluting buffer and concentration: 5% NFDm /TBST.

**Please note:** All products are "FOR RESEARCH USE ONLY AND ARE NOT INTENDED FOR DIAGNOSTIC OR THERAPEUTIC USE"

### Our Abpromise to you: Quality guaranteed and expert technical support

- Replacement or refund for products not performing as stated on the datasheet
- Valid for 12 months from date of delivery
- Response to your inquiry within 24 hours
- We provide support in Chinese, English, French, German, Japanese and Spanish
- Extensive multi-media technical resources to help you
- We investigate all quality concerns to ensure our products perform to the highest standards

If the product does not perform as described on this datasheet, we will offer a refund or replacement. For full details of the Abpromise, please visit <http://www.abcam.com/abpromise> or contact our technical team.

### Terms and conditions

- Guarantee only valid for products bought direct from Abcam or one of our authorized distributors