


Product datasheet

Anti-Achaete-scute homolog 3 antibody ab109806

1 Image

Overview

<b>Product name</b>	Anti-Achaete-scute homolog 3 antibody
<b>Description</b>	Goat polyclonal to Achaete-scute homolog 3
<b>Host species</b>	Goat
<b>Tested applications</b>	<b>Suitable for:</b> WB <b>Unsuitable for:</b> ICC
<b>Species reactivity</b>	<b>Reacts with:</b> Mouse, Human <b>Predicted to work with:</b> Rat, Cow, Dog 
<b>Immunogen</b>	Synthetic peptide: C-HLPEDYLEKRLSK , corresponding to internal sequence amino acids 118-130 of Human Achaete-scute homolog 3 (NP_064435.1).  <a href="#">Run BLAST with</a> <a href="#">Run BLAST with</a>
<b>Positive control</b>	Human and Mouse liver lysates

Properties

<b>Form</b>	Liquid
<b>Storage instructions</b>	Shipped at 4°C. Upon delivery aliquot and store at -20°C. Avoid freeze / thaw cycles.
<b>Storage buffer</b>	Preservative: 0.02% Sodium Azide Constituents: 0.5% BSA, Tris buffered saline, pH 7.3
<b>Purity</b>	Immunogen affinity purified
<b>Purification notes</b>	Purified from goat serum by ammonium sulphate precipitation followed by antigen affinity chromatography using the immunizing peptide.
<b>Clonality</b>	Polyclonal
<b>Isotype</b>	IgG

Applications

Our [Abpromise guarantee](#) covers the use of **ab109806** in the following tested applications.

The application notes include recommended starting dilutions; optimal dilutions/concentrations should be determined by the end user.

Application	Abreviews	Notes
-------------	-----------	-------

WB Use a concentration of 0.1 - 0.3 µg/ml. Detects a band of approximately 20 kDa (predicted molecular weight: 20 kDa).

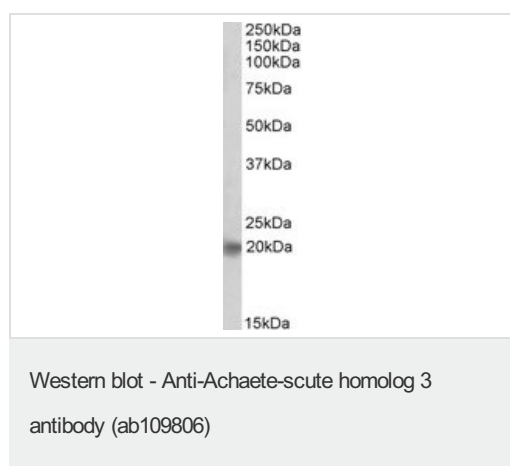
**Application notes** Is unsuitable for ICC.

## Target

**Relevance** Basic helix-loop-helix transcription factors, such as Achaete-scute homolog 3, are essential for the determination of cell fate and the development and differentiation of numerous tissues.

**Cellular localization** Nuclear

## Images



Anti-Achaete-scute homolog 3 antibody (ab109806) at 0.1 µg/ml + Human liver lysate (in RIPA buffer) at 35 µg

Developed using the ECL technique.

**Predicted band size:** 20 kDa

**Observed band size:** 20 kDa

**Exposure time:** 1 hour

Primary Incubation 1 hour.

**Please note:** All products are "FOR RESEARCH USE ONLY AND ARE NOT INTENDED FOR DIAGNOSTIC OR THERAPEUTIC USE"

## Our Abpromise to you: Quality guaranteed and expert technical support

- Replacement or refund for products not performing as stated on the datasheet
- Valid for 12 months from date of delivery
- Response to your inquiry within 24 hours
- We provide support in Chinese, English, French, German, Japanese and Spanish
- Extensive multi-media technical resources to help you
- We investigate all quality concerns to ensure our products perform to the highest standards

If the product does not perform as described on this datasheet, we will offer a refund or replacement. For full details of the Abpromise, please visit <http://www.abcam.com/abpromise> or contact our technical team.

## Terms and conditions

---

- Guarantee only valid for products bought direct from Abcam or one of our authorized distributors