

Product datasheet

Anti-Advillin antibody ab72210

★★★★★ 1 Abreviews 2 Images

Overview

Product name	Anti-Advillin antibody
Description	Rabbit polyclonal to Advillin
Host species	Rabbit
Tested applications	Suitable for: WB, IHC-Fr
Species reactivity	Reacts with: Mouse Predicted to work with: Rat, Human
Immunogen	Synthetic peptide conjugated to KLH derived from within residues 750 to the C-terminus of Mouse Advillin. Read Abcam's proprietary immunogen policy (Peptide available as ab87446 .)
Positive control	This antibody gave a positive signal in mouse brain and skin tissue lysates.
General notes	This product may be covered by one or more of the following U.S. Patents. 6,166,192 6,426,411 6,525,178 6,872,391 6,908,987 7,250,283 7,091,006 7,354,738 8,105,774 8,445,233

Properties

Form	Liquid
Storage instructions	Shipped at 4°C. Store at +4°C short term (1-2 weeks). Upon delivery aliquot. Store at -20°C or -80°C. Avoid freeze / thaw cycle.
Storage buffer	Preservative: 0.02% Sodium Azide Constituents: 1% BSA, PBS, pH 7.4
Purity	Immunogen affinity purified
Clonality	Polyclonal

Isotype

IgG

Applications

Our [Abpromise guarantee](#) covers the use of **ab72210** in the following tested applications.

The application notes include recommended starting dilutions; optimal dilutions/concentrations should be determined by the end user.

Application	Abreviews	Notes
WB		Use a concentration of 1 µg/ml. Detects a band of approximately 92 kDa (predicted molecular weight: 92 kDa).
IHC-Fr	★★★★★	1/500.

Target

Function

Ca(2+)-regulated actin-binding protein. May have a unique function in the morphogenesis of neuronal cells which form ganglia. Required for SREC1-mediated regulation of neurite-like outgrowth. Plays a role in regenerative sensory axon outgrowth and remodeling processes after peripheral injury in neonates. Involved in the formation of long fine actin-containing filopodia-like structures in fibroblast. Plays a role in ciliogenesis.

Tissue specificity

Most highly expressed in the small intestine and colonic lining. Weaker expression also detected in the thymus, prostate, testes and uterus.

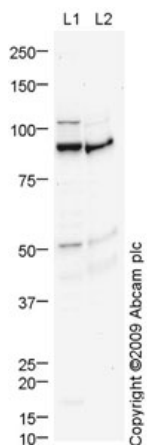
Sequence similarities

Belongs to the villin/gelsolin family.
Contains 6 gelsolin-like repeats.
Contains 1 HP (headpiece) domain.

Cellular localization

Cytoplasm > cytoskeleton. Cell projection. Cell projection > axon.

Images



Western blot - Anti-Advillin antibody (ab72210)

All lanes : Anti-Advillin antibody (ab72210) at 1 µg/ml

Lane 1 : Brain (Mouse) Tissue Lysate

Lane 2 : Mouse skin tissue lysate - total protein ([ab4025](#))

Lysates/proteins at 10 µg per lane.

Secondary

All lanes : Goat polyclonal to Rabbit IgG - H&L - Pre-Adsorbed (HRP) at 1/3000 dilution

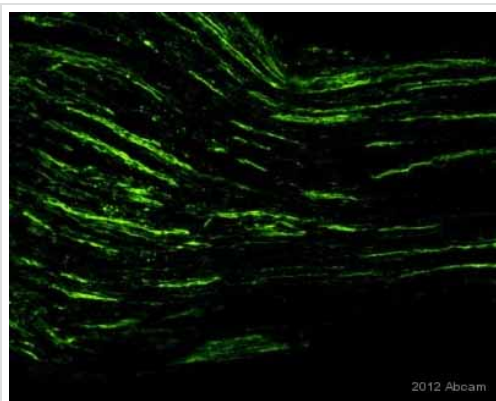
Developed using the ECL technique.

Performed under reducing conditions.

Predicted band size: 92 kDa

Observed band size: 92 kDa

Additional bands at: 105 kDa, 52 kDa. We are unsure as to the identity of these extra bands.



Immunohistochemistry (Frozen sections) - Anti-Advillin antibody (ab72210)

Image courtesy of Dr Xinpeng Dun by Abreview.

ab72210 staining Advillin in murine sciatic nerve tissue by Immunohistochemistry (Frozen sections).

Tissue was fixed in formaldehyde, blocked with 3% BSA for 45 minutes and then incubated with ab72210 at a 1/500 dilution for 16 hours at 4°C. The secondary used was an Alexa-Fluor 488 conjugated goat anti-rabbit polyclonal used at a 1/500 dilution.

Please note: All products are "FOR RESEARCH USE ONLY AND ARE NOT INTENDED FOR DIAGNOSTIC OR THERAPEUTIC USE"

Our Abpromise to you: Quality guaranteed and expert technical support

- Replacement or refund for products not performing as stated on the datasheet
- Valid for 12 months from date of delivery

- Response to your inquiry within 24 hours
- We provide support in Chinese, English, French, German, Japanese and Spanish
- Extensive multi-media technical resources to help you
- We investigate all quality concerns to ensure our products perform to the highest standards

If the product does not perform as described on this datasheet, we will offer a refund or replacement. For full details of the Abpromise, please visit <http://www.abcam.com/abpromise> or contact our technical team.

Terms and conditions

- Guarantee only valid for products bought direct from Abcam or one of our authorized distributors