


Product datasheet

Anti-Aminoacylase 1 antibody ab96098

2 Images

Overview

Product name	Anti-Aminoacylase 1 antibody
Description	Rabbit polyclonal to Aminoacylase 1
Host species	Rabbit
Tested applications	Suitable for: WB, ICC/IF
Species reactivity	Reacts with: Human Predicted to work with: Mouse, Rat, Cow, Pig 
Immunogen	Recombinant protein fragment containing a sequence corresponding to a region within amino acids 89 and 336 of Human Aminoacylase 1 (NP_000657).
Positive control	293T, A431, HeLa, HepG2, MOLT4, H1299 and Raji cell lysates ICC/IF: A431 cell

Properties

Form	Liquid
Storage instructions	Shipped at 4°C. Upon delivery aliquot and store at -20°C or -80°C. Avoid repeated freeze / thaw cycles.
Storage buffer	Preservative: 0.01% Thimerosal (merthiolate) Constituents: 10% Glycerol, 0.1M Tris, 0.1M Glycine, pH 7.0
Purity	Immunogen affinity purified
Clonality	Polyclonal
Isotype	IgG

Applications

Our [Abpromise guarantee](#) covers the use of **ab96098** in the following tested applications.

The application notes include recommended starting dilutions; optimal dilutions/concentrations should be determined by the end user.

Application	Abreviews	Notes
WB		1/500 - 1/3000. Predicted molecular weight: 46 kDa.
ICC/IF		1/100 - 1/200.

Target

Function

Involved in the hydrolysis of N-acylated or N-acetylated amino acids (except L-aspartate).

Tissue specificity

Expression is highest in kidney, strong in brain and weaker in placenta and spleen.

Involvement in disease

Defects in ACY1 are the cause of aminoacylase-1 deficiency (ACY1D) [MIM:609924]. ACY1D results in a metabolic disorder manifesting with encephalopathy, unspecific psychomotor delay, psychomotor delay with atrophy of the vermis and syringomyelia, marked muscular hypotonia or normal clinical features. Epileptic seizures are a frequent feature. All affected individuals exhibit markedly increased urinary excretion of several N-acetylated amino acids.

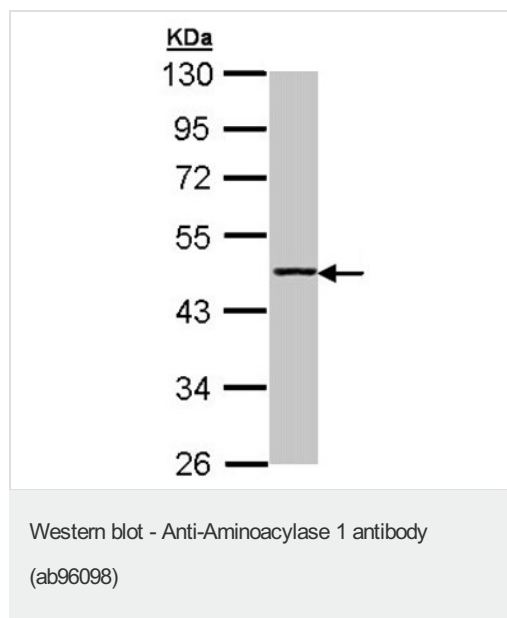
Sequence similarities

Belongs to the peptidase M20A family.

Cellular localization

Cytoplasm.

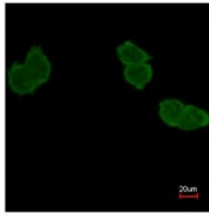
Images



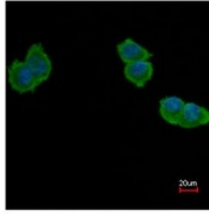
Anti-Aminoacylase 1 antibody (ab96098) at
1/1000 dilution + H1299 whole cell lysate at 30
 μ g

Predicted band size: 46 kDa

10% SDS PAGE



Immunofluorescence analysis of Aminoacylase 1 in paraformaldehyde fixed A431, using ab96098 at a 1/200 dilution. Lower image merged with DNA probe.



Immunocytochemistry/ Immunofluorescence - Anti-Aminoacylase 1 antibody (ab96098)

Please note: All products are "FOR RESEARCH USE ONLY AND ARE NOT INTENDED FOR DIAGNOSTIC OR THERAPEUTIC USE"

Our Abpromise to you: Quality guaranteed and expert technical support

- Replacement or refund for products not performing as stated on the datasheet
- Valid for 12 months from date of delivery
- Response to your inquiry within 24 hours
- We provide support in Chinese, English, French, German, Japanese and Spanish
- Extensive multi-media technical resources to help you
- We investigate all quality concerns to ensure our products perform to the highest standards

If the product does not perform as described on this datasheet, we will offer a refund or replacement. For full details of the Abpromise, please visit <http://www.abcam.com/abpromise> or contact our technical team.

Terms and conditions

- Guarantee only valid for products bought direct from Abcam or one of our authorized distributors