

## Product datasheet

# Anti-Annexin A11 antibody ab4121

1 Image

### Overview

---

<b>Product name</b>	Anti-Annexin A11 antibody
<b>Description</b>	Goat polyclonal to Annexin A11
<b>Specificity</b>	This antibody is expected to recognise all three human isoforms.
<b>Tested applications</b>	<b>Suitable for:</b> WB
<b>Species reactivity</b>	<b>Reacts with:</b> Human
<b>Immunogen</b>	Synthetic peptide: YPGYPPPPGGYPP, corresponding to N terminal amino acids 3-15 of Annexin A11 from N Terminus of the protein sequence according to NP_001148; NP_665875; NP_665876 <a href="#">Run BLAST with ExPASy</a> <a href="#">Run BLAST with NCBI</a>
<b>Positive control</b>	HeLa lysate.

### Properties

---

<b>Form</b>	Liquid
<b>Storage instructions</b>	Shipped at 4°C. Upon delivery aliquot and store at -20°C or -80°C. Avoid repeated freeze / thaw cycles.
<b>Storage buffer</b>	Preservative: 0.02% Sodium Azide Constituents: 0.5% BSA, 5mg/ml Tris, pH 7.3
<b>Purity</b>	IgG fraction
<b>Purification notes</b>	Purified from goat serum by ammonium sulphate precipitation followed by antigen affinity chromatography using the immunizing peptide.
<b>Clonality</b>	Polyclonal
<b>Isotype</b>	IgG

### Applications

---

Our [Abpromise guarantee](#) covers the use of **ab4121** in the following tested applications.

The application notes include recommended starting dilutions; optimal dilutions/concentrations should be determined by the end user.

Application	Abreviews	Notes
-------------	-----------	-------

WB

#### Application notes

Western Blot: approx 55 kDa band seen in HeLa lysate (Predicted MW of approx. 58 kDa according to NP\_001148).  
Recommended for use at 0.2-1.0µg/ml.

#### Target

##### Function

Binds specifically to calyculin in a calcium-dependent manner (By similarity). Required for midbody formation and completion of the terminal phase of cytokinesis.

##### Sequence similarities

Belongs to the annexin family.  
Contains 4 annexin repeats.

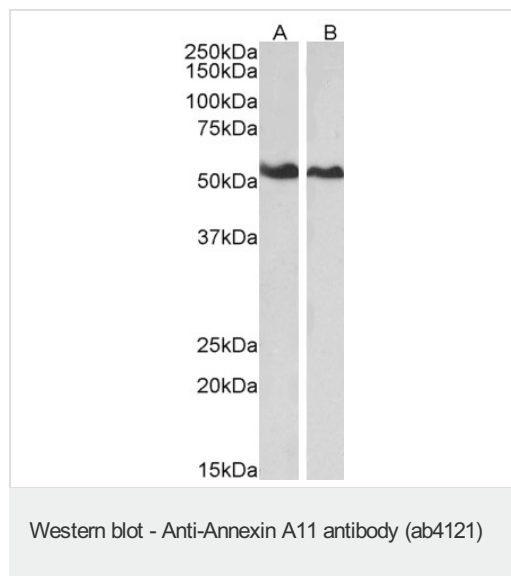
##### Domain

A pair of annexin repeats may form one binding site for calcium and phospholipid.

##### Cellular localization

Cytoplasm. Melanosome. Nucleus envelope. Nucleus > nucleoplasm. Cytoplasm > cytoskeleton > spindle. Found throughout the nucleoplasm at interphase and during mitosis concentrates around the mitotic apparatus (By similarity). Elevation of intracellular calcium causes relocalization from the nucleoplasm to the nuclear envelope, with little effect on the cytoplasmic pool. Localization to the nuclear envelope is cell-cycle dependent.

#### Images



**All lanes :** Anti-Annexin A11 antibody (ab4121) at 0.01 µg/ml

**Lane 1 :** HeLa lysates (in RIPA buffer)

**Lane 2 :** Jurkat lysates (in RIPA buffer)

Lysates/proteins at 35 µg per lane.

**Observed band size :** 54 kDa

Primary incubation was 1 hour.

Detected by chemiluminescence.

**Please note:** All products are "FOR RESEARCH USE ONLY AND ARE NOT INTENDED FOR DIAGNOSTIC OR THERAPEUTIC USE"

#### Our Abpromise to you: Quality guaranteed and expert technical support

- Replacement or refund for products not performing as stated on the datasheet
- Valid for 12 months from date of delivery

- Response to your inquiry within 24 hours
- We provide support in Chinese, English, French, German, Japanese and Spanish
- Extensive multi-media technical resources to help you
- We investigate all quality concerns to ensure our products perform to the highest standards

If the product does not perform as described on this datasheet, we will offer a refund or replacement. For full details of the Abpromise, please visit <http://www.abcam.com/abpromise> or contact our technical team.

### **Terms and conditions**

---

- Guarantee only valid for products bought direct from Abcam or one of our authorized distributors