

Product datasheet

Anti-Arylsulfatase J antibody ab122344

★☆☆☆☆ 1 Abreviews 2 Images

Overview

Product name	Anti-Arylsulfatase J antibody
Description	Rabbit polyclonal to Arylsulfatase J
Host species	Rabbit
Tested applications	Suitable for: IHC-P, WB
Species reactivity	Reacts with: Human
Immunogen	antigen sequence, corresponding to amino acids 213-307 (DSPGMCGYDL YENDNAAWDY DNGIYSTQMY TQRVQQILAS HNPTKPIFLY IAYQAVHSPL QAPGRYFEHY RSIININRRR YAAMLSCLE AINNV) of Human Arylsulfatase J. Run BLAST with ExPASy Run BLAST with NCBI
Positive control	Human smooth muscle tissue; Human tonsil lysate.

Properties

Form	Liquid
Storage instructions	Shipped at 4°C. Upon delivery aliquot and store at -20°C. Avoid freeze / thaw cycles.
Storage buffer	pH: 7.20 Preservative: 0.02% Sodium azide Constituents: 59% PBS, 40% Glycerol
Purity	Immunogen affinity purified
Clonality	Polyclonal
Isotype	IgG

Applications

Our [Abpromise guarantee](#) covers the use of **ab122344** in the following tested applications.

The application notes include recommended starting dilutions; optimal dilutions/concentrations should be determined by the end user.

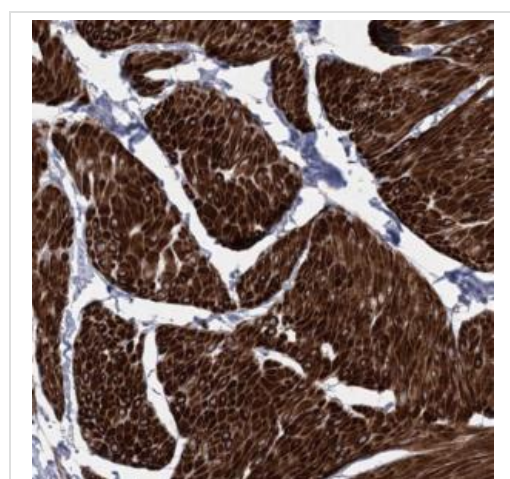
Application	Abreviews	Notes
IHC-P		1/20 - 1/50. Perform heat mediated antigen retrieval with citrate buffer pH 6 before commencing with IHC staining protocol.

Application	Abreviews	Notes
WB	★☆☆☆☆	1/250 - 1/500.

Target

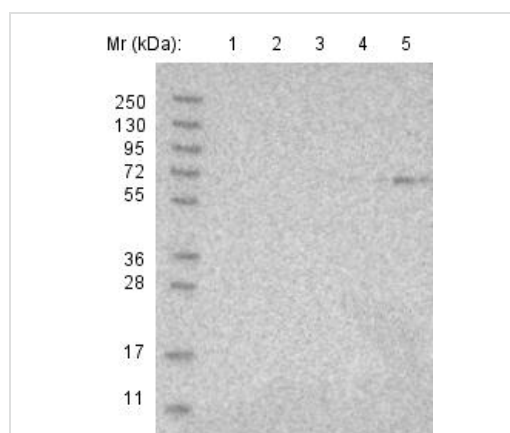
Sequence similarities	Belongs to the sulfatase family.
Post-translational modifications	The conversion to 3-oxoalanine (also known as C-formylglycine, FGly), of a serine or cysteine residue in prokaryotes and of a cysteine residue in eukaryotes, is critical for catalytic activity.
Cellular localization	Secreted.

Images



ab122344, at a 1/25 dilution, staining Arylsulfatase J in paraffin-embedded Human smooth muscle tissue by immunohistochemistry.

Immunohistochemistry (Formalin/PFA-fixed paraffin-embedded sections) - Anti-Arylsulfatase J antibody (ab122344)



All lanes : Anti-Arylsulfatase J antibody (ab122344) at 1/250 dilution

Lane 1 : RT-4 cell lysate

Lane 2 : U-251 MG cell lysate

Lane 3 : Human plasma

Lane 4 : Human liver lysate

Lane 5 : Human tonsil lysate

Developed using the ECL technique.

Western blot - Anti-Arylsulfatase J antibody (ab122344)

Please note: All products are "FOR RESEARCH USE ONLY AND ARE NOT INTENDED FOR DIAGNOSTIC OR THERAPEUTIC USE"

Our Abpromise to you: Quality guaranteed and expert technical support

- Replacement or refund for products not performing as stated on the datasheet
- Valid for 12 months from date of delivery
- Response to your inquiry within 24 hours

- We provide support in Chinese, English, French, German, Japanese and Spanish
- Extensive multi-media technical resources to help you
- We investigate all quality concerns to ensure our products perform to the highest standards

If the product does not perform as described on this datasheet, we will offer a refund or replacement. For full details of the Abpromise, please visit <http://www.abcam.com/abpromise> or contact our technical team.

Terms and conditions

- Guarantee only valid for products bought direct from Abcam or one of our authorized distributors