


Product datasheet

Anti-BANP antibody ab72076

2 Images

Overview

Product name	Anti-BANP antibody
Description	Rabbit polyclonal to BANP
Host species	Rabbit
Tested applications	Suitable for: IP, IHC-P, WB
Species reactivity	Reacts with: Mouse, Rat, Human Predicted to work with: Rabbit, Horse, Guinea pig, Cow, Dog, Chimpanzee, Rhesus monkey, Chinese hamster, Orngutan 
Immunogen	Synthetic peptide corresponding to a region between residue 425 and the C-terminus (residue 469) of human BANP (TrEMBL entry Q96GJ7)
Positive control	Nuclear extract from HeLa cells

Properties

Form	Liquid
Storage instructions	Shipped at 4°C. Upon delivery aliquot and store at -20°C. Avoid freeze / thaw cycles.
Storage buffer	Preservative: 0.09% Sodium Azide Constituents: 8mM PBS, 60mM Citrate, 150mM Tris, pH 7 to 8
Purity	Immunogen affinity purified
Clonality	Polyclonal
Isotype	IgG

Applications

Our [Abpromise guarantee](#) covers the use of **ab72076** in the following tested applications.

The application notes include recommended starting dilutions; optimal dilutions/concentrations should be determined by the end user.

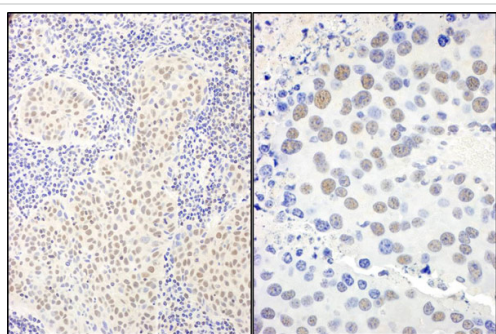
Application	Abreviews	Notes
IP		1/200 - 1/2500.
IHC-P		1/2000 - 1/10000.

Application	Abreviews	Notes
WB		1/10000 - 1/25000. Predicted molecular weight: 59 kDa.

Target

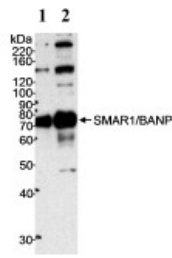
Function	Controls V(D)J recombination during T-cell development by repressing T-cell receptor (TCR) beta enhancer function. Binds to scaffold/matrix attachment region beta (S/MARbeta), an ATC-rich DNA sequence located upstream of the TCR beta enhancer. Represses cyclin D1 transcription by recruiting HDAC1 to its promoter, thereby diminishing H3K9ac, H3S10ph and H4K8ac levels. Promotes TP53 'Ser-15' phosphorylation and nuclear accumulation, which causes cell cycle arrest.
Tissue specificity	Down-regulated in breast cancer cell lines.
Sequence similarities	Belongs to the BANP/SMAR1 family. Contains 1 BEN domain.
Cellular localization	Nucleus.

Images



Immunohistochemistry (Formalin/PFA-fixed paraffin-embedded sections) analysis of human lung carcinoma (left) and mouse renal cell carcinoma (right) tissues labelling BANP with ab72076 at 1/5000 (0.2µg/ml). Selection: DAB.

Immunohistochemistry (Formalin/PFA-fixed paraffin-embedded sections) - Anti-BANP antibody (ab72076)



Western blot - Anti-BANP antibody (ab72076)

All lanes : Anti-BANP antibody (ab72076) at 0.1 µg/ml

Lane 1 : Nuclear extract from HeLa cells at 5 µg

Lane 2 : Nuclear extract from HeLa cells at 20 µg

Predicted band size: 59 kDa

Observed band size: 70 kDa

Additional bands at: 150 kDa, 250 kDa. We are unsure as to the identity of these extra bands.

Please note: All products are "FOR RESEARCH USE ONLY AND ARE NOT INTENDED FOR DIAGNOSTIC OR THERAPEUTIC USE"

Our Abpromise to you: Quality guaranteed and expert technical support

- Replacement or refund for products not performing as stated on the datasheet
- Valid for 12 months from date of delivery
- Response to your inquiry within 24 hours
- We provide support in Chinese, English, French, German, Japanese and Spanish
- Extensive multi-media technical resources to help you
- We investigate all quality concerns to ensure our products perform to the highest standards

If the product does not perform as described on this datasheet, we will offer a refund or replacement. For full details of the Abpromise, please visit <http://www.abcam.com/abpromise> or contact our technical team.

Terms and conditions

- Guarantee only valid for products bought direct from Abcam or one of our authorized distributors