

Product datasheet

Anti-BCNP antibody ab113755

★ ★ ★ ☆ ☆ 1 Abreviews 1 Image

Overview

Product name	Anti-BCNP antibody
Description	Rabbit polyclonal to BCNP
Tested applications	Suitable for: WB
Species reactivity	Reacts with: Human Predicted to work with: Macaque monkey, Gorilla, Orangutan
Immunogen	Synthetic peptide conjugated to KLH derived from within residues 1 - 100 of Human BCNP. Read Abcam's proprietary immunogen policy
Positive control	This antibody gave a positive signal in the following tissue lysates: Human Bone Marrow; Human Tonsil; Human Lymph Node.

Properties

Form	Liquid
Storage instructions	Shipped at 4°C. Store at +4°C short term (1-2 weeks). Upon delivery aliquot. Store at -20°C or -80°C. Avoid freeze / thaw cycle.
Storage buffer	pH: 7.40 Preservative: 0.02% Sodium azide Constituent: PBS Note: Batches of this product that have a concentration < 1mg/ml may have BSA added as a stabilising agent. If you would like information about the formulation of a specific lot, please contact our scientific support team who will be happy to help.
Purity	Immunogen affinity purified
Clonality	Polyclonal
Isotype	IgG

Applications

Our [Abpromise guarantee](#) covers the use of **ab113755** in the following tested applications.

The application notes include recommended starting dilutions; optimal dilutions/concentrations should be determined by the end user.

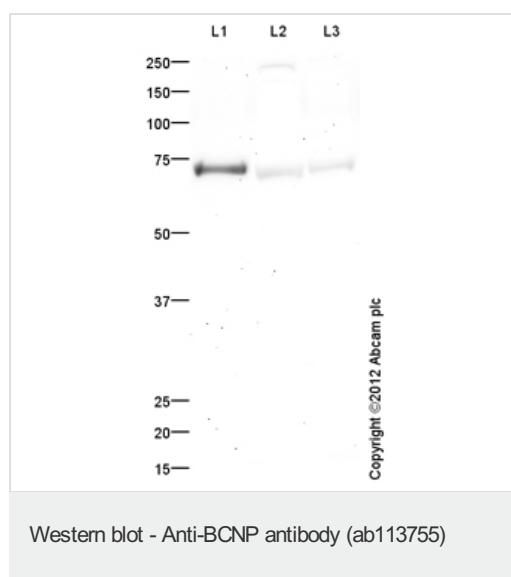
Application	Abreviews	Notes
WB	★★★★☆	Use a concentration of 1 µg/ml. Detects a band of approximately 74 kDa (predicted molecular weight: 77 kDa).

Target

Tissue specificity Specifically expressed in B-lymphocytes.

Sequence similarities Belongs to the Niban family.

Images



All lanes : Anti-BCNP antibody (ab113755)
at 1 µg/ml

Lane 1 : Bone Marrow (Human) Tissue
Lysate - adult normal tissue

Lane 2 : Tonsil (Human) Tissue Lysate

Lane 3 : Human lymph node tissue lysate -
total protein ([ab29871](#))

Lysates/proteins at 10 µg per lane.

Secondary

Goat Anti-Rabbit IgG H&L (HRP) preadsorbed
([ab97080](#)) at 1/5000 dilution

Developed using the ECL technique

Performed under reducing conditions.

Predicted band size : 77 kDa

Observed band size : 74 kDa

Additional bands at : 241 kDa. We are
unsure as to the identity of these extra bands.

Exposure time : 20 minutes

Please note: All products are "FOR RESEARCH USE ONLY AND ARE NOT INTENDED FOR DIAGNOSTIC OR THERAPEUTIC USE"

Our Abpromise to you: Quality guaranteed and expert technical support

- Replacement or refund for products not performing as stated on the datasheet

- Valid for 12 months from date of delivery
- Response to your inquiry within 24 hours

- We provide support in Chinese, English, French, German, Japanese and Spanish
- Extensive multi-media technical resources to help you
- We investigate all quality concerns to ensure our products perform to the highest standards

If the product does not perform as described on this datasheet, we will offer a refund or replacement. For full details of the Abpromise, please visit <http://www.abcam.com/abpromise> or contact our technical team.

Terms and conditions

- Guarantee only valid for products bought direct from Abcam or one of our authorized distributors