

## Product datasheet

# Anti-BDH2 antibody ab77560

1 Image

### Overview

---

<b>Product name</b>	Anti-BDH2 antibody
<b>Description</b>	Goat polyclonal to BDH2
<b>Host species</b>	Goat
<b>Tested applications</b>	<b>Suitable for:</b> WB, ELISA
<b>Species reactivity</b>	<b>Reacts with:</b> Human <b>Predicted to work with:</b> Mouse, Rat, Cow
<b>Immunogen</b>	Synthetic peptide: C-TKKKQIDQFANE , corresponding to internal sequence amino acids 60-71 of human BDH2 (NP_064524.3). <a href="#">Run BLAST with</a> <a href="#">Run BLAST with</a>
<b>Positive control</b>	Human brain (cerebellum), kidney and liver lysates.

### Properties

---

<b>Form</b>	Liquid
<b>Storage instructions</b>	Shipped at 4°C. Upon delivery aliquot and store at -20°C. Avoid repeated freeze / thaw cycles.
<b>Storage buffer</b>	Preservative: 0.02% Sodium Azide Constituents: 0.5% BSA, Tris buffered saline, pH 7.3
<b>Purity</b>	Immunogen affinity purified
<b>Purification notes</b>	ab77560 was purified from goat serum by ammonium sulphate precipitation followed by antigen affinity chromatography using the immunizing peptide.
<b>Clonality</b>	Polyclonal
<b>Isotype</b>	IgG

### Applications

---

Our [Abpromise guarantee](#) covers the use of **ab77560** in the following tested applications.

The application notes include recommended starting dilutions; optimal dilutions/concentrations should be determined by the end user.

Application	Abreviews	Notes
WB		
ELISA		

**Application notes**

Peptide ELISA: Use at an assay dependent dilution. Antibody detection limit dilution 1/64,000.  
 WB: Use at a concentration of 0.3 - 1 µg/ml. Predicted molecular weight: 27 kDa.

Not yet tested in other applications.  
 Optimal dilutions/concentrations should be determined by the end user.

## Target

**Function**

Dehydrogenase that mediates the formation of 2,5-dihydroxybenzoic acid (2,5-DHBA), a siderophore that shares structural similarities with bacterial enterobactin and associates with LCN2, thereby playing a key role in iron homeostasis and transport. Also acts as a 3-hydroxybutyrate dehydrogenase.

**Pathway**

Siderophore biosynthesis.

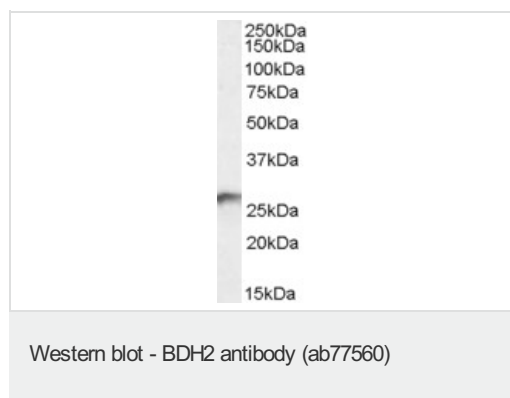
**Sequence similarities**

Belongs to the short-chain dehydrogenases/reductases (SDR) family.

**Cellular localization**

Cytoplasm.

## Images



Anti-BDH2 antibody (ab77560) at 0.3 µg/ml + human kidney lysate (in RIPA buffer) at 35 µg

Developed using the ECL technique.

**Predicted band size:** 27 kDa

**Observed band size:** 27 kDa

**Exposure time:** 1 hour

**Please note:** All products are "FOR RESEARCH USE ONLY AND ARE NOT INTENDED FOR DIAGNOSTIC OR THERAPEUTIC USE"

## Our Abpromise to you: Quality guaranteed and expert technical support

- Replacement or refund for products not performing as stated on the datasheet
- Valid for 12 months from date of delivery
- Response to your inquiry within 24 hours
- We provide support in Chinese, English, French, German, Japanese and Spanish
- Extensive multi-media technical resources to help you

- We investigate all quality concerns to ensure our products perform to the highest standards

If the product does not perform as described on this datasheet, we will offer a refund or replacement. For full details of the Abpromise, please visit <http://www.abcam.com/abpromise> or contact our technical team.

### **Terms and conditions**

---

- Guarantee only valid for products bought direct from Abcam or one of our authorized distributors