


Product datasheet

Anti-BMP4 antibody ab118867

3 Images

Overview

<b>Product name</b>	Anti-BMP4 antibody
<b>Description</b>	Rabbit polyclonal to BMP4
<b>Host species</b>	Rabbit
<b>Tested applications</b>	<b>Suitable for:</b> WB, IHC-P
<b>Species reactivity</b>	<b>Reacts with:</b> Human <b>Predicted to work with:</b> Mouse, Rat, Rabbit, Chicken 
<b>Immunogen</b>	BMP4 antibody was raised against a synthetic peptide surrounding amino acid 395 at the C-terminus of Human BMP4 protein.
<b>Positive control</b>	Human lung tissue, Human prostate tissue, Human kidney tissue.

Properties

<b>Form</b>	Liquid
<b>Storage instructions</b>	Shipped at 4°C. Upon delivery aliquot and store at -20°C or -80°C. Avoid repeated freeze / thaw cycles.
<b>Storage buffer</b>	pH: 7.20 Preservative: 0.01% Thimerosal (merthiolate) Constituents: 69% PBS, 30% Glycerol, 0.5% BSA
<b>Purity</b>	Protein A purified
<b>Clonality</b>	Polyclonal
<b>Isotype</b>	IgG

Applications

Our [Abpromise guarantee](#) covers the use of **ab118867** in the following tested applications.

The application notes include recommended starting dilutions; optimal dilutions/concentrations should be determined by the end user.

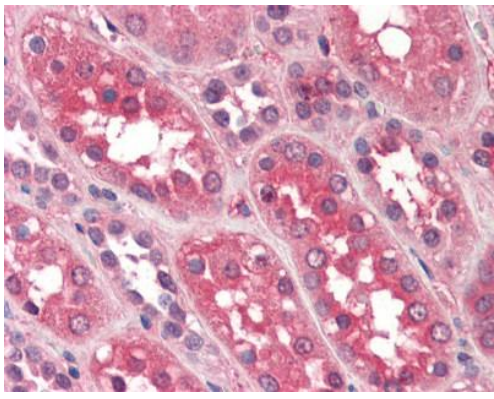
Application	Abreviews	Notes
WB		Use a concentration of 0.5 - 4 µg/ml. Predicted molecular weight: 47 kDa.

Application	Abreviews	Notes
IHC-P		Use a concentration of 5 µg/ml. Perform heat mediated antigen retrieval with citrate buffer pH 6 before commencing with IHC staining protocol.

## Target

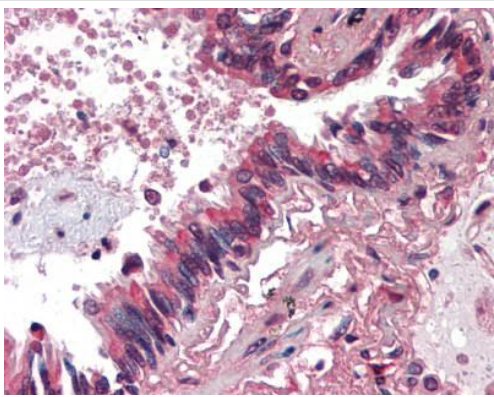
<b>Function</b>	Induces cartilage and bone formation. Also act in mesoderm induction, tooth development, limb formation and fracture repair. Acts in concert with PTHLH/PTHRP to stimulate ductal outgrowth during embryonic mammary development and to inhibit hair follicle induction.
<b>Tissue specificity</b>	Expressed in the lung and lower levels seen in the kidney. Present also in normal and neoplastic prostate tissues, and prostate cancer cell lines.
<b>Involvement in disease</b>	<p>Defects in BMP4 are the cause of microphthalmia syndromic type 6 (MCOPS6) [MIM:607932]; also known as microphthalmia and pituitary anomalies or microphthalmia with brain and digit developmental anomalies. Microphthalmia is a clinically heterogeneous disorder of eye formation, ranging from small size of a single eye to complete bilateral absence of ocular tissues (anophthalmia). In many cases, microphthalmia/anophthalmia occurs in association with syndromes that include non-ocular abnormalities. MCOPS6 is characterized by microphthalmia/anophthalmia associated with facial, genital, skeletal, neurologic and endocrine anomalies.</p> <p>Defects in BMP4 are the cause of non-syndromic orofacial cleft type 11 (OFC11) [MIM:600625]. Non-syndromic orofacial cleft is a common birth defect consisting of cleft lips with or without cleft palate. Cleft lips are associated with cleft palate in two-third of cases. A cleft lip can occur on one or both sides and range in severity from a simple notch in the upper lip to a complete opening in the lip extending into the floor of the nostril and involving the upper gum. OFC11 is an unusual anomaly consisting of a paramedian scar of the upper lip with an appearance suggesting that a typical cleft lip was corrected in utero.</p>
<b>Sequence similarities</b>	Belongs to the TGF-beta family.
<b>Cellular localization</b>	Secreted > extracellular space > extracellular matrix.

## Images



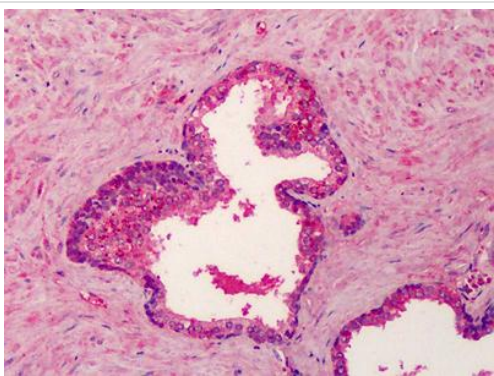
Immunohistochemistry (Formalin/PFA-fixed paraffin-embedded sections) - Anti-BMP4 antibody (ab118867)

ab118867 at 5 µg/ml staining BMP4 in Paraffin-embedded Human kidney tissue by immunohistochemistry. . After incubation with ab118867, slides were incubated with biotinylated secondary antibody, followed by alkaline phosphatase-streptavidin and chromogen.



Immunohistochemistry (Formalin/PFA-fixed paraffin-embedded sections) - Anti-BMP4 antibody (ab118867)

ab118867 at 5 µg/ml staining BMP4 in Paraffin-embedded Human lung tissue by immunohistochemistry. After incubation with ab118867, slides were incubated with biotinylated secondary antibody, followed by alkaline phosphatase-streptavidin and chromogen.



Immunohistochemistry (Formalin/PFA-fixed paraffin-embedded sections) - Anti-BMP4 antibody (ab118867)

ab118867 at 5 µg/ml staining BMP4 in Paraffin-embedded Human prostate tissue by immunohistochemistry. After incubation with ab118867, slides were incubated with biotinylated secondary antibody, followed by alkaline phosphatase-streptavidin and chromogen.

## **Our Abpromise to you: Quality guaranteed and expert technical support**

---

- Replacement or refund for products not performing as stated on the datasheet
- Valid for 12 months from date of delivery
- Response to your inquiry within 24 hours
  
- We provide support in Chinese, English, French, German, Japanese and Spanish
- Extensive multi-media technical resources to help you
- We investigate all quality concerns to ensure our products perform to the highest standards

If the product does not perform as described on this datasheet, we will offer a refund or replacement. For full details of the Abpromise, please visit <http://www.abcam.com/abpromise> or contact our technical team.

## **Terms and conditions**

---

- Guarantee only valid for products bought direct from Abcam or one of our authorized distributors