

Product datasheet

Anti-BRDG 1 antibody - Aminoterminal end ab63056

1 Image

Overview

<b>Product name</b>	Anti-BRDG 1 antibody - Aminoterminal end
<b>Description</b>	Rabbit polyclonal to BRDG 1 - Aminoterminal end
<b>Host species</b>	Rabbit
<b>Tested applications</b>	<b>Suitable for:</b> ELISA, IHC-P
<b>Species reactivity</b>	<b>Reacts with:</b> Human
<b>Immunogen</b>	Synthetic peptide from the N terminal region of human BRDG 1, conjugated to KLH.
<b>Positive control</b>	Human prostate carcinoma tissue.

Properties

<b>Form</b>	Liquid
<b>Storage instructions</b>	Shipped at 4°C. Store at +4°C short term (1-2 weeks). Upon delivery aliquot. Store at -20°C long term.
<b>Storage buffer</b>	Preservative: 0.09% Sodium Azide Constituents: PBS
<b>Purity</b>	Protein A purified
<b>Purification notes</b>	ab63056 was purified through a protein A column, eluted with high and low pH buffers and neutralized immediately, followed by dialysis against PBS.
<b>Clonality</b>	Polyclonal
<b>Isotype</b>	IgG

Applications

Our [Abpromise guarantee](#) covers the use of **ab63056** in the following tested applications.

The application notes include recommended starting dilutions; optimal dilutions/concentrations should be determined by the end user.

Application	Abreviews	Notes
ELISA		1/1000.
IHC-P		1/50.

## Target

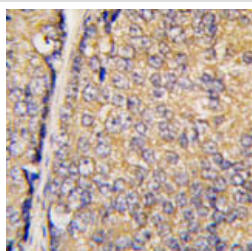
---

<b>Function</b>	In BCR signaling, appears to function as a docking protein acting downstream of TEC and participates in a positive feedback loop by increasing the activity of TEC.
<b>Sequence similarities</b>	Contains 1 PH domain. Contains 1 SH2 domain.
<b>Post-translational modifications</b>	Phosphorylated on tyrosine by TEC.
<b>Cellular localization</b>	Cytoplasm.

---

## Images

---



Immunohistochemistry (Formalin/PFA-fixed paraffin-embedded sections) - BRDG 1 antibody (ab63056)

ab63056, at 1/50 dilution, staining BRDG 1 in formalin-fixed, paraffin-embedded human prostate carcinoma tissue by immunohistochemistry. ab63056 was peroxidase-conjugated to the secondary antibody, followed by DAB staining.

**Please note:** All products are "FOR RESEARCH USE ONLY AND ARE NOT INTENDED FOR DIAGNOSTIC OR THERAPEUTIC USE"

## Our Abpromise to you: Quality guaranteed and expert technical support

---

- Replacement or refund for products not performing as stated on the datasheet
- Valid for 12 months from date of delivery
- Response to your inquiry within 24 hours
- We provide support in Chinese, English, French, German, Japanese and Spanish
- Extensive multi-media technical resources to help you
- We investigate all quality concerns to ensure our products perform to the highest standards

If the product does not perform as described on this datasheet, we will offer a refund or replacement. For full details of the Abpromise, please visit <http://www.abcam.com/abpromise> or contact our technical team.

## Terms and conditions

---

- Guarantee only valid for products bought direct from Abcam or one of our authorized distributors