

Product datasheet

Anti-Bcl3 antibody ab27780

★☆☆☆☆ 2 Abreviews 1 References 1 Image

Overview

Product name	Anti-Bcl3 antibody
Description	Rabbit polyclonal to Bcl3
Host species	Rabbit
Tested applications	Suitable for: WB, IP, IHC-Fr
Species reactivity	Reacts with: Mouse, Rat, Human
Immunogen	Synthetic peptide (Human) - mapping to the C terminus of Bcl 3.

Properties

Form	Liquid
Storage instructions	Shipped at 4°C. Upon delivery aliquot and store at -20°C or -80°C. Avoid repeated freeze / thaw cycles.
Storage buffer	Preservative: 0.02% Thimerosal (merthiolate) Constituents: 50% Glycerol, 1.0% BSA, PBS, pH 7.2
Purity	Protein G purified
Clonality	Polyclonal
Isotype	IgG

Applications

Our [Abpromise guarantee](#) covers the use of **ab27780** in the following tested applications.

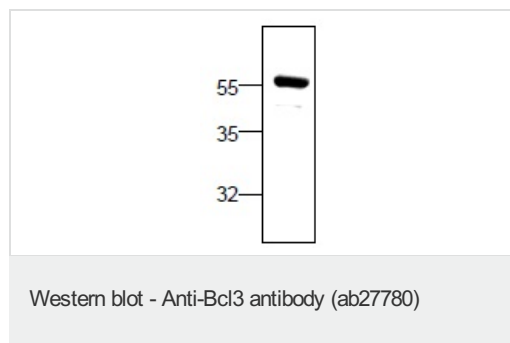
The application notes include recommended starting dilutions; optimal dilutions/concentrations should be determined by the end user.

Application	Abreviews	Notes
WB	★☆☆☆☆	Use a concentration of 1 - 4 µg/ml. Detects a band of approximately 60 kDa (predicted molecular weight: 47 kDa).
IP		Use a concentration of 5 - 10 µg/ml.
IHC-Fr		Use a concentration of 20 - 40 µg/ml.

Target

Function	Contributes to the regulation of transcriptional activation of NF-kappa-B target genes. In the cytoplasm, inhibits the nuclear translocation of the NF-kappa-B p50 subunit. In the nucleus, acts as transcriptional activator that promotes transcription of NF-kappa-B target genes. Contributes to the regulation of cell proliferation.
Involvement in disease	Note=A chromosomal aberration involving BCL3 may be a cause of B-cell chronic lymphocytic leukemia (B-CLL). Translocation t(14;19)(q32;q13.1) with immunoglobulin gene regions.
Sequence similarities	Contains 7 ANK repeats.
Post-translational modifications	Polyubiquitinated. Ubiquitination via 'Lys-63'-linked ubiquitin chains is required for nuclear accumulation. Deubiquitinated by CYLD, which acts on 'Lys-63'-linked ubiquitin chains. Deubiquitination by CYLD prevents nuclear accumulation. Activated by phosphorylation.
Cellular localization	Nucleus. Cytoplasm. Cytoplasm > perinuclear region. Ubiquitination via 'Lys-63'-linked ubiquitin chains is required for nuclear accumulation.

Images



Anti-Bcl3 antibody (ab27780) at 2 µg/ml +
Jurkat

Predicted band size: 47 kDa

Please note: All products are "FOR RESEARCH USE ONLY AND ARE NOT INTENDED FOR DIAGNOSTIC OR THERAPEUTIC USE"

Our Abpromise to you: Quality guaranteed and expert technical support

- Replacement or refund for products not performing as stated on the datasheet
- Valid for 12 months from date of delivery
- Response to your inquiry within 24 hours
- We provide support in Chinese, English, French, German, Japanese and Spanish
- Extensive multi-media technical resources to help you
- We investigate all quality concerns to ensure our products perform to the highest standards

If the product does not perform as described on this datasheet, we will offer a refund or replacement. For full details of the Abpromise, please visit <http://www.abcam.com/abpromise> or contact our technical team.

Terms and conditions

- Guarantee only valid for products bought direct from Abcam or one of our authorized distributors