


Product datasheet

Anti-C19orf61 antibody ab85659

1 References 2 Images

Overview

Product name	Anti-C19orf61 antibody
Description	Rabbit polyclonal to C19orf61
Host species	Rabbit
Tested applications	Suitable for: IP, IHC-P, WB
Species reactivity	Reacts with: Human Predicted to work with: Mouse, Rat, Rabbit, Horse, Guinea pig, Cow, Dog, Pig, Chimpanzee, Rhesus monkey, Gorilla, Orangutan, Elephant 
Immunogen	Synthetic peptide designed within residues corresponding to amino acids 75 - 125 of Human C19orf61 (NP_061981.2).
Positive control	HeLa cell lysate

Properties

Form	Liquid
Storage instructions	Shipped at 4°C. Upon delivery aliquot and store at -20°C. Avoid freeze / thaw cycles.
Storage buffer	Preservative: 0.09% Sodium Azide Constituents: Tris citrate/phosphate buffer, pH 7-8
Purity	Immunogen affinity purified
Clonality	Polyclonal
Isotype	IgG

Applications

Our [Abpromise guarantee](#) covers the use of **ab85659** in the following tested applications.

The application notes include recommended starting dilutions; optimal dilutions/concentrations should be determined by the end user.

Application	Abreviews	Notes
IP		Use at 5-10 µg/mg of lysate.

Application	Abreviews	Notes
IHC-P		1/2000 - 1/10000. Perform heat mediated antigen retrieval with citrate buffer pH 6 before commencing with IHC staining protocol.
WB		Use a concentration of 1 µg/ml. Predicted molecular weight: 58 kDa. Not suitable for crude preparations (e.g. whole cell lysate). Can be used for WB of enriched (e.g. immunoprecipitated) sources of C19orf61.

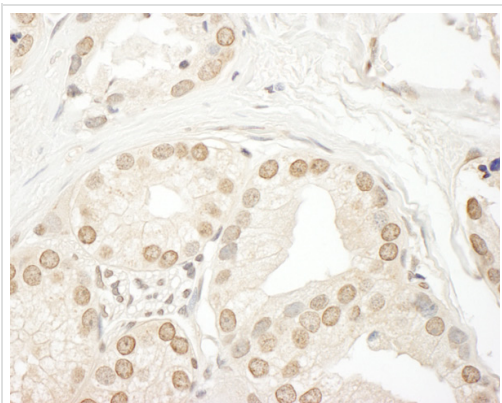
Target

Function Involved in nonsense-mediated decay (NMD) of mRNAs containing premature stop codons. Is recruited by release factors to stalled ribosomes together with SMG1 and SMG8 (forming the SMG1C protein kinase complex) and, in the SMG1C complex, is required for the efficient association between SMG1 and SMG8.

Sequence similarities Belongs to the SMG9 family.

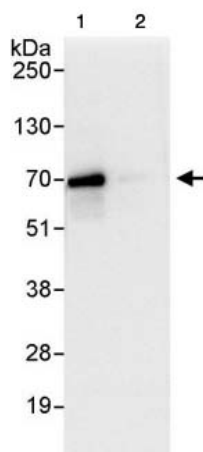
Post-translational modifications Phosphorylated by SMG1.

Images



Immunohistochemistry (Formalin/PFA-fixed paraffin-embedded sections) analysis of human prostate carcinoma tissue labelling C19orf61 with [ab85689](#) at 1/5000 (0.2µg/ml).
Detection: DAB.

Immunohistochemistry (Formalin/PFA-fixed paraffin-embedded sections) - Anti-C19orf61 antibody (ab85659)



Immunoprecipitation - Anti-C19orf61 antibody
(ab85659)

1mg whole cell lysate from HeLa cells was immunoprecipitated using 10 μ g [ab90659](#). 20% of the immunoprecipitate was loaded in each lane, and probed with [ab90659](#) at 1 μ g/ml (lane 1) or with a control IgG (lane 2). Detection: chemoluminescence, with an exposure time of 1 second.

Please note: All products are "FOR RESEARCH USE ONLY AND ARE NOT INTENDED FOR DIAGNOSTIC OR THERAPEUTIC USE"

Our Abpromise to you: Quality guaranteed and expert technical support

- Replacement or refund for products not performing as stated on the datasheet
- Valid for 12 months from date of delivery
- Response to your inquiry within 24 hours
- We provide support in Chinese, English, French, German, Japanese and Spanish
- Extensive multi-media technical resources to help you
- We investigate all quality concerns to ensure our products perform to the highest standards

If the product does not perform as described on this datasheet, we will offer a refund or replacement. For full details of the Abpromise, please visit <http://www.abcam.com/abpromise> or contact our technical team.

Terms and conditions

- Guarantee only valid for products bought direct from Abcam or one of our authorized distributors