

Product datasheet

Anti-C20orf7 antibody ab106984

1 Image

Overview

<b>Product name</b>	Anti-C20orf7 antibody
<b>Description</b>	Rabbit polyclonal to C20orf7
<b>Tested applications</b>	<b>Suitable for:</b> WB
<b>Species reactivity</b>	<b>Reacts with:</b> Mouse, Human
<b>Immunogen</b>	Synthetic peptide conjugated to KLH, corresponding to C terminal amino acids 295-323 of Human C20orf7 (NP_077025.2 , NP_001034464.1).
<b>Positive control</b>	Mouse heart tissue lysate

Properties

<b>Form</b>	Liquid
<b>Storage instructions</b>	Shipped at 4°C. Store at 4°C (up to 6 months). Store at -20°C long term.
<b>Storage buffer</b>	Preservative: 0.09% Sodium Azide Constituents: PBS
<b>Purity</b>	Immunogen affinity purified
<b>Purification notes</b>	ab106984 is purified through a protein A column, followed by peptide affinity purification.
<b>Clonality</b>	Polyclonal
<b>Isotype</b>	IgG

Applications

Our [Abpromise guarantee](#) covers the use of **ab106984** in the following tested applications.

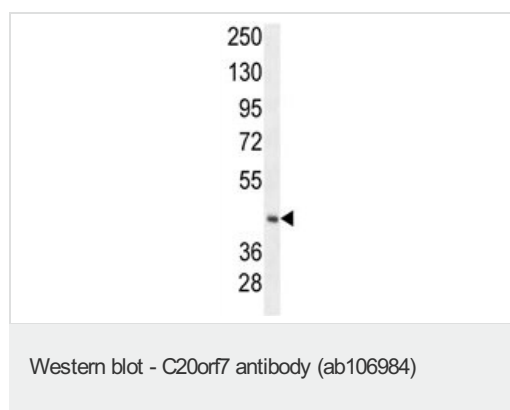
The application notes include recommended starting dilutions; optimal dilutions/concentrations should be determined by the end user.

Application	Abreviews	Notes
WB		1/100 - 1/500. Predicted molecular weight: 39 kDa.

Target

<b>Function</b>	Putative methyltransferase involved in mitochondrial complex I assembly at early stages.
<b>Involvement in disease</b>	Defects in C20orf7 are a cause of mitochondrial complex I deficiency (MT-C1D) [MIM:252010]. A disorder of the mitochondrial respiratory chain that causes a wide range of clinical disorders, from lethal neonatal disease to adult-onset neurodegenerative disorders. Phenotypes include macrocephaly with progressive leukodystrophy, non-specific encephalopathy, cardiomyopathy, myopathy, liver disease, Leigh syndrome, Leber hereditary optic neuropathy, and some forms of Parkinson disease.
<b>Sequence similarities</b>	Belongs to the methyltransferase superfamily.
<b>Cellular localization</b>	Mitochondrion inner membrane. Peripherally localized on the matrix face of the mitochondrial inner membrane.

## Images



Anti-C20orf7 antibody (ab106984) at 1/100 dilution + Mouse heart tissue lysate at 35 µg

**Predicted band size** : 39 kDa

**Please note:** All products are "FOR RESEARCH USE ONLY AND ARE NOT INTENDED FOR DIAGNOSTIC OR THERAPEUTIC USE"

## Our Abpromise to you: Quality guaranteed and expert technical support

- Replacement or refund for products not performing as stated on the datasheet
- Valid for 12 months from date of delivery
- Response to your inquiry within 24 hours
- We provide support in Chinese, English, French, German, Japanese and Spanish
- Extensive multi-media technical resources to help you
- We investigate all quality concerns to ensure our products perform to the highest standards

If the product does not perform as described on this datasheet, we will offer a refund or replacement. For full details of the Abpromise, please visit <http://www.abcam.com/abpromise> or contact our technical team.

## Terms and conditions

- Guarantee only valid for products bought direct from Abcam or one of our authorized distributors