

## Product datasheet

# Anti-C4b antibody ab118887

1 Image

### Overview

<b>Product name</b>	Anti-C4b antibody
<b>Description</b>	Chicken polyclonal to C4b
<b>Host species</b>	Chicken
<b>Tested applications</b>	<b>Suitable for:</b> WB, ELISA, IHC-P, Flow Cyt
<b>Species reactivity</b>	<b>Reacts with:</b> Human
<b>Immunogen</b>	Purified Human C4b protein.
<b>Positive control</b>	Human Placenta tissue.

### Properties

<b>Form</b>	Liquid
<b>Storage instructions</b>	Shipped at 4°C. Store at +4°C short term (1-2 weeks). Upon delivery aliquot. Store at -20°C long term.
<b>Storage buffer</b>	Preservative: 0.02% Sodium azide Constituent: 99% PBS
<b>Clonality</b>	Polyclonal
<b>Isotype</b>	IgY

### Applications

Our [Abpromise guarantee](#) covers the use of **ab118887** in the following tested applications.

The application notes include recommended starting dilutions; optimal dilutions/concentrations should be determined by the end user.

Application	Abreviews	Notes
WB		Use at an assay dependent concentration. Predicted molecular weight: 193 kDa.
ELISA		Use at an assay dependent concentration.
IHC-P		Use a concentration of 20 µg/ml. Perform heat mediated antigen retrieval with citrate buffer pH 6 before commencing with IHC staining protocol.

Application	Abreviews	Notes
-------------	-----------	-------

Flow Cyt

Use 0.1µg for 10<sup>6</sup> cells.

[ab37382](#) - Chicken polyclonal IgY, is suitable for use as an isotype control with this antibody.

## Target

### Function

C4 plays a central role in the activation of the classical pathway of the complement system. It is processed by activated C1 which removes from the alpha chain the C4a anaphylatoxin. The remaining alpha chain fragment C4b is the major activation product and is an essential subunit of the C3 convertase (C4b2a) and the C5 convertase (C3bC4b2a) enzymes of the classical complement pathway.

Derived from proteolytic degradation of complement C4, C4a anaphylatoxin is a mediator of local inflammatory process. It induces the contraction of smooth muscle, increases vascular permeability and causes histamine release from mast cells and basophilic leukocytes.

### Sequence similarities

Contains 1 anaphylatoxin-like domain.

Contains 1 NTR domain.

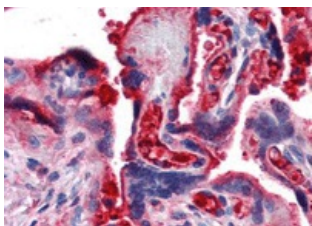
### Post-translational modifications

Prior to secretion, the single-chain precursor is enzymatically cleaved to yield the non-identical chains (alpha, beta and gamma). During activation, the alpha chain is cleaved by C1 into C4a and C4b, and C4b stays linked to the beta and gamma chains. Further degradation of C4b by C1 into the inactive fragments C4c and C4d blocks the generation of C3 convertase.

### Cellular localization

Secreted.

## Images



Immunohistochemistry (Formalin/PFA-fixed paraffin-embedded sections) - Anti-C4b antibody (ab118887)

ab118887, at 20 µg/ml, staining C4b in Formalin-fixed, Paraffin-embedded Human Placenta tissue by Immunohistochemistry followed by biotinylated secondary antibody, alkaline phosphatase-streptavidin and chromogen.

**Please note:** All products are "FOR RESEARCH USE ONLY AND ARE NOT INTENDED FOR DIAGNOSTIC OR THERAPEUTIC USE"

## Our Promise to you: Quality guaranteed and expert technical support

- Replacement or refund for products not performing as stated on the datasheet
- Valid for 12 months from date of delivery
- Response to your inquiry within 24 hours

- We provide support in Chinese, English, French, German, Japanese and Spanish
- Extensive multi-media technical resources to help you
- We investigate all quality concerns to ensure our products perform to the highest standards

If the product does not perform as described on this datasheet, we will offer a refund or replacement. For full details of the Abpromise, please visit <http://www.abcam.com/abpromise> or contact our technical team.

### **Terms and conditions**

---

- Guarantee only valid for products bought direct from Abcam or one of our authorized distributors