

## Product datasheet

# Anti-CD3 antibody [KT3] ab33429

★★★★☆ 3 Abreviews 1 References 1 Image

### Overview

---

<b>Product name</b>	Anti-CD3 antibody [KT3]
<b>Description</b>	Rat monoclonal [KT3] to CD3
<b>Tested applications</b>	<b>Suitable for:</b> ICC/IF, Flow Cyt, IHC-Fr <b>Unsuitable for:</b> IHC-P
<b>Species reactivity</b>	<b>Reacts with:</b> Mouse
<b>Immunogen</b>	Tissue/ cell preparation mature T cells (Mouse)
<b>General notes</b>	ab33429 may be used to trigger proliferation and cytotoxicity of CD3 positive cells.

### Properties

---

<b>Form</b>	Liquid
<b>Storage instructions</b>	Shipped at 4°C. Store at +4°C short term (1-2 weeks). Upon delivery aliquot. Store at -20°C long term.
<b>Storage buffer</b>	Preservative: 0.09% Sodium Azide Constituents: PBS, pH 7.4
<b>Purity</b>	Protein G purified
<b>Purification notes</b>	Purified from tissue culture supernatant.
<b>Primary antibody notes</b>	ab33429 may be used to trigger proliferation and cytotoxicity of CD3 positive cells.
<b>Clonality</b>	Monoclonal
<b>Clone number</b>	KT3
<b>Myeloma</b>	NS0
<b>Isotype</b>	IgG2a

### Applications

---

Our [Abpromise guarantee](#) covers the use of **ab33429** in the following tested applications.

The application notes include recommended starting dilutions; optimal dilutions/concentrations should be determined by the end user.

Application	Abreviews	Notes
ICC/IF	★★★★★	Use at an assay dependent concentration.
Flow Cyt		1/100. <a href="#">ab18450</a> -Rat monoclonal IgG2a, is suitable for use as an isotype control with this antibody.
IHC-Fr	★★★★☆	Use at an assay dependent concentration.

**Application notes** Is unsuitable for IHC-P.

## Target

### Function

The CD3 complex mediates signal transduction.

### Involvement in disease

Defects in CD3D are a cause of severe combined immunodeficiency autosomal recessive T-cell-negative/B-cell-positive/NK-cell-positive (T(-)/B(+)/NK(+)) SCID [MIM:608971]. A form of severe combined immunodeficiency (SCID), a genetically and clinically heterogeneous group of rare congenital disorders characterized by impairment of both humoral and cell-mediated immunity, leukopenia, and low or absent antibody levels. Patients present in infancy recurrent, persistent infections by opportunistic organisms. The common characteristic of all types of SCID is absence of T-cell-mediated cellular immunity due to a defect in T-cell development.

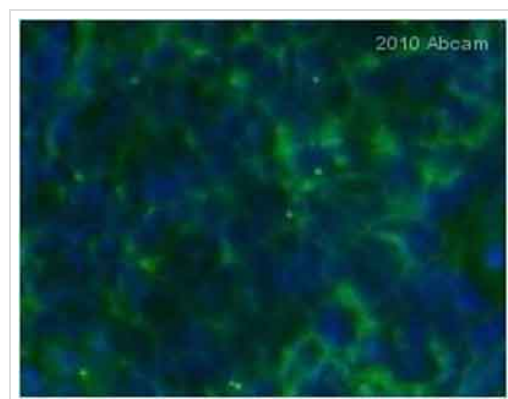
### Sequence similarities

Contains 1 ITAM domain.

### Cellular localization

Membrane.

## Images



Immunohistochemistry (Frozen sections) - CD3 antibody [KT3] (ab33429)

Image courtesy of an anonymous Abreview

ab33429 staining CD3 in mouse spleen tissue by Immunohistochemistry (frozen sections).

Tissue was fixed with acetone and then blocked with 5% serum for 1 hour at 25°C followed by incubation with the primary antibody at a 1/250 dilution for 12 hours at 4°C. A goat anti-rabbit IgG conjugated to Alexa Fluor®488 was used as secondary antibody at a 1/250 dilution.

**Please note:** All products are "FOR RESEARCH USE ONLY AND ARE NOT INTENDED FOR DIAGNOSTIC OR THERAPEUTIC USE"

## Our Promise to you: Quality guaranteed and expert technical support

- Replacement or refund for products not performing as stated on the datasheet
- Valid for 12 months from date of delivery

- Response to your inquiry within 24 hours
- We provide support in Chinese, English, French, German, Japanese and Spanish
- Extensive multi-media technical resources to help you
- We investigate all quality concerns to ensure our products perform to the highest standards

If the product does not perform as described on this datasheet, we will offer a refund or replacement. For full details of the Abpromise, please visit <http://www.abcam.com/abpromise> or contact our technical team.

### **Terms and conditions**

---

- Guarantee only valid for products bought direct from Abcam or one of our authorized distributors