

Product datasheet

Anti-CD62E antibody [1.2B6] ab6630

★ ★ ★ ☆ ☆
[3 Abreviews](#)
[9 References](#)
[1 Image](#)

Overview

Product name	Anti-CD62E antibody [1.2B6]
Description	Mouse monoclonal [1.2B6] to CD62E
Host species	Mouse
Specificity	This antibody recognises the human CD62E and CD62P cell surface antigens binding to a common epitope on these members of the selectin family.
Tested applications	Suitable for: ELISA, Flow Cyt, IHC-Fr, IP, WB Unsuitable for: IHC-P
Species reactivity	Reacts with: Human, Pig
Immunogen	Human E-Selectin (ELAM-1)
General notes	This antibody inhibits neutrophil adhesion to E-selectin and to P-selectin. E-selectin (ELAM-1) is expressed on the surface of activated endothelial cells.

Properties

Form	Liquid
Storage instructions	Shipped at 4°C. Store at +4°C short term (1-2 weeks). Upon delivery aliquot. Store at -20°C or -80°C. Avoid freeze / thaw cycle.
Storage buffer	Preservative: 0.09% Sodium Azide Constituents: PBS
Purity	Protein A purified
Purification notes	Purified IgG prepared by affinity chromatography on Protein A from tissue culture supernatant.
Primary antibody notes	This antibody inhibits neutrophil adhesion to E-selectin and to P-selectin. E-selectin (ELAM-1) is expressed on the surface of activated endothelial cells.
Clonality	Monoclonal
Clone number	1.2B6
Myeloma	NS1
Isotype	IgG1

Applications

Our [Abpromise guarantee](#) covers the use of **ab6630** in the following tested applications.

The application notes include recommended starting dilutions; optimal dilutions/concentrations should be determined by the end user.

Application	Abreviews	Notes
ELISA	★★★★☆	Use at an assay dependent concentration.
Flow Cyt		Use a concentration of 10 µg/ml. ab170190 - Mouse monoclonal IgG1, is suitable for use as an isotype control with this antibody.
IHC-Fr	★★★★☆	Use a concentration of 1 - 10 µg/ml.
IP		Use at an assay dependent concentration.
WB	★★★★☆	Use at an assay dependent concentration. Non-reduced only.

Application notes Is unsuitable for IHC-P.

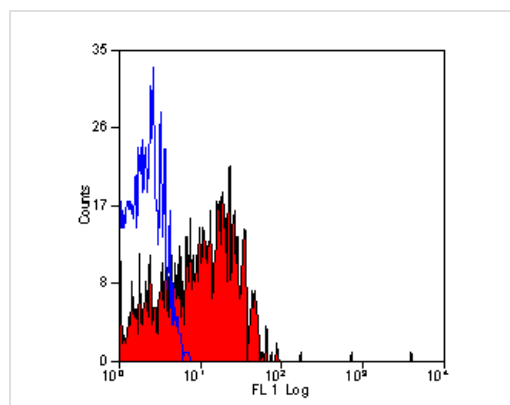
Target

Function Cell-surface glycoprotein having a role in immunoadhesion. Mediates in the adhesion of blood neutrophils in cytokine-activated endothelium through interaction with PSGL1/SELPLG. May have a role in capillary morphogenesis.

Sequence similarities Belongs to the selectin/LECAM family.
Contains 1 C-type lectin domain.
Contains 1 EGF-like domain.
Contains 6 Sushi (CCP/SCR) domains.

Cellular localization Membrane.

Images



ab6630 staining CD62E in thrombin activated human peripheral blood platelets by Flow Cytometry analysis.

Flow Cytometry - Anti-CD62E antibody [1.2B6] (ab6630)

Our Abpromise to you: Quality guaranteed and expert technical support

- Replacement or refund for products not performing as stated on the datasheet
- Valid for 12 months from date of delivery
- Response to your inquiry within 24 hours

- We provide support in Chinese, English, French, German, Japanese and Spanish
- Extensive multi-media technical resources to help you
- We investigate all quality concerns to ensure our products perform to the highest standards

If the product does not perform as described on this datasheet, we will offer a refund or replacement. For full details of the Abpromise, please visit <http://www.abcam.com/abpromise> or contact our technical team.

Terms and conditions

- Guarantee only valid for products bought direct from Abcam or one of our authorized distributors