

Product datasheet

Anti-CD68 antibody [KP1], prediluted ab74704

4 References 1 Image

Overview

Product name	Anti-CD68 antibody [KP1], prediluted
Description	Mouse monoclonal [KP1] to CD68, prediluted
Host species	Mouse
Tested applications	Suitable for: IHC-P
Species reactivity	Reacts with: Rat, Cat, Human, Monkey
Immunogen	Subcellular fraction of human alveolar macrophages
Positive control	Human tonsil, lymph node, or spleen tissue.
General notes	<p>ab74704 is important for identifying macrophages in tissue sections. It stains macrophages in a wide variety of human tissues, including Kupffer cells and macrophages in the red pulp of the spleen, in lamina propria of the gut, in lung alveoli, and in bone marrow. It reacts with myeloid precursors and peripheral blood granulocytes. It also reacts with plasmacytoid T cells which are supposed to be of monocyte/macrophage origin. It shows strong granular cytoplasmic staining of chronic and acute myeloid leukemia and also reacts with rare cases of true histiocytic neoplasia. Tumors of lymphoid origin are usually not stained.</p> <p>Abcam is committed to meeting high standards of ethical manufacturing and has decided to discontinue this product by June 2019 as it has been generated by the ascites method. We are sorry for any inconvenience this may cause. We would recommend antibody ab125212 as a replacement.</p>

Properties

Form	Prediluted
Storage instructions	Shipped at 4°C. Store at +4°C.
Storage buffer	Preservative: 0.09% Sodium Azide Constituents: 0.5M Tris HCl, stabilizing protein, pH 7.6
Purity	Protein G purified
Primary antibody notes	<p>ab74704 is important for identifying macrophages in tissue sections. It stains macrophages in a wide variety of human tissues, including Kupffer cells and macrophages in the red pulp of the spleen, in lamina propria of the gut, in lung alveoli, and in bone marrow. It reacts with myeloid precursors and peripheral blood granulocytes. It also reacts with plasmacytoid T cells which are supposed to be of monocyte/macrophage origin. It shows strong granular cytoplasmic staining of chronic and acute myeloid leukemia and also reacts with rare cases of true histiocytic neoplasia.</p>

	Tumors of lymphoid origin are usually not stained.
Clonality	Monoclonal
Clone number	KP1
Isotype	IgG1
Light chain type	kappa

Applications

Our [Abpromise guarantee](#) covers the use of **ab74704** in the following tested applications.

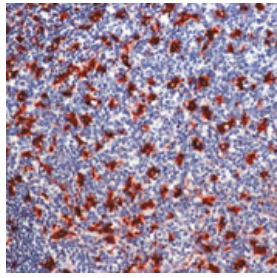
The application notes include recommended starting dilutions; optimal dilutions/concentrations should be determined by the end user.

Application	Abreviews	Notes
IHC-P		1/1. Perform enzymatic antigen retrieval before commencing with IHC staining protocol. Ready to use.

Target

Function	Could play a role in phagocytic activities of tissue macrophages, both in intracellular lysosomal metabolism and extracellular cell-cell and cell-pathogen interactions. Binds to tissue- and organ-specific lectins or selectins, allowing homing of macrophage subsets to particular sites. Rapid recirculation of CD68 from endosomes and lysosomes to the plasma membrane may allow macrophages to crawl over selectin-bearing substrates or other cells.
Tissue specificity	Highly expressed by blood monocytes and tissue macrophages. Also expressed in lymphocytes, fibroblasts and endothelial cells. Expressed in many tumor cell lines which could allow them to attach to selectins on vascular endothelium, facilitating their dissemination to secondary sites.
Sequence similarities	Belongs to the LAMP family.
Post-translational modifications	N- and O-glycosylated.
Cellular localization	Cell membrane and Endosome membrane. Lysosome membrane.

Images



Formalin-fixed, paraffin-embedded human tonsil stained with ab74704 using peroxidase-conjugate and AEC chromogen. Note intense cytoplasmic staining of macrophages.

Immunohistochemistry (Formalin/PFA-fixed paraffin-embedded sections) - CD68 antibody [KP1], prediluted (ab74704)

Please note: All products are "FOR RESEARCH USE ONLY AND ARE NOT INTENDED FOR DIAGNOSTIC OR THERAPEUTIC USE"

Our Abpromise to you: Quality guaranteed and expert technical support

- Replacement or refund for products not performing as stated on the datasheet
- Valid for 12 months from date of delivery
- Response to your inquiry within 24 hours
- We provide support in Chinese, English, French, German, Japanese and Spanish
- Extensive multi-media technical resources to help you
- We investigate all quality concerns to ensure our products perform to the highest standards

If the product does not perform as described on this datasheet, we will offer a refund or replacement. For full details of the Abpromise, please visit <http://www.abcam.com/abpromise> or contact our technical team.

Terms and conditions

- Guarantee only valid for products bought direct from Abcam or one of our authorized distributors