


Product datasheet

Anti-CDC42 binding protein kinase alpha antibody ab96659

[1 References](#) [2 Images](#)

Overview

Product name	Anti-CDC42 binding protein kinase alpha antibody
Description	Rabbit polyclonal to CDC42 binding protein kinase alpha
Host species	Rabbit
Tested applications	Suitable for: WB, IHC-P
Species reactivity	Reacts with: Human Predicted to work with: Mouse, Rat 
Immunogen	Recombinant fragment, corresponding to a region within amino acids 373-574 of Human CDC42 binding protein kinase alpha isoform 3 (NP_055641).
Positive control	H1299, A549 and HeLa whole cell lysates

Properties

Form	Liquid
Storage instructions	Shipped at 4°C. Upon delivery aliquot and store at -20°C or -80°C. Avoid repeated freeze / thaw cycles.
Storage buffer	Preservative: 0.01% Thimerosal (merthiolate) Constituents: 40% Glycerol, 1 x PBS, pH 7.0
Purity	Protein A purified
Clonality	Polyclonal
Isotype	IgG

Applications

Our [Abpromise guarantee](#) covers the use of **ab96659** in the following tested applications.

The application notes include recommended starting dilutions; optimal dilutions/concentrations should be determined by the end user.

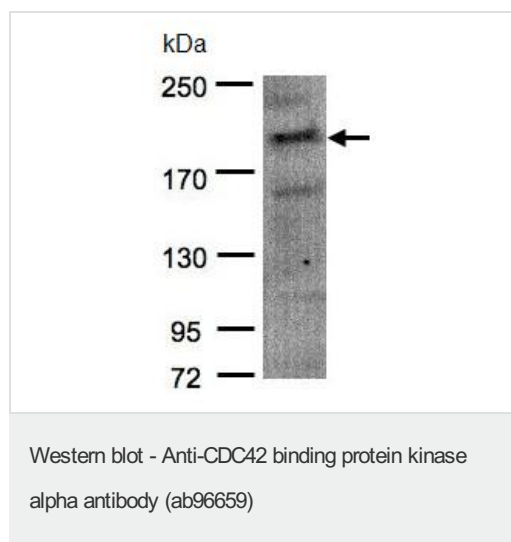
Application	Abreviews	Notes
WB		1/500 - 1/3000. Predicted molecular weight: 186 kDa.

Application	Abreviews	Notes
IHC-P		1/100 - 1/500. Perform heat-mediated antigen retrieval with 10mM Citrate buffer or Tris-EDTA buffer (pH 8.0)

Target

Function	May act as a downstream effector of CDC42 in cytoskeletal reorganization. Contributes to the actomyosin contractility required for cell invasion, through the regulation of MYPT1 and thus MLC2 phosphorylation.
Tissue specificity	Abundant in the heart, brain, skeletal muscle, kidney, and pancreas, with little or no expression in the lung and liver.
Sequence similarities	<p>Belongs to the protein kinase superfamily. AGC Ser/Thr protein kinase family. DMPK subfamily. Contains 1 AGC-kinase C-terminal domain.</p> <p>Contains 1 CNH domain.</p> <p>Contains 1 CRIB domain.</p> <p>Contains 1 PH domain.</p> <p>Contains 1 phorbol-ester/DAG-type zinc finger.</p> <p>Contains 1 protein kinase domain.</p>
Cellular localization	Cytoplasm. Displays a dispersed punctate distribution and concentrates along the cell periphery, especially at the leading edge and cell-cell junction. This concentration is PH-domain dependent.

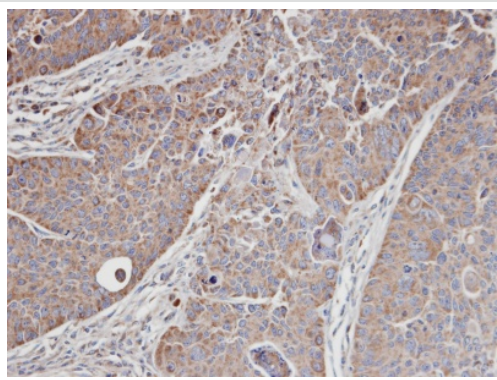
Images



Anti-CDC42 binding protein kinase alpha antibody (ab96659) at 1/1500 dilution + H1299 whole cell lysate at 30 µg

Predicted band size: 186 kDa

7.5% SDS PAGE



ab96659 staining CDC42 binding protein kinase alpha in SW480 xenograft at 1/100 dilution by Immunohistochemistry (Formalin/PFA-Fixed Paraffin-embedded sections)

Immunohistochemistry (Formalin/PFA-fixed paraffin-embedded sections) - Anti-CDC42 binding protein kinase alpha antibody (ab96659)

Please note: All products are "FOR RESEARCH USE ONLY AND ARE NOT INTENDED FOR DIAGNOSTIC OR THERAPEUTIC USE"

Our Abpromise to you: Quality guaranteed and expert technical support

- Replacement or refund for products not performing as stated on the datasheet
- Valid for 12 months from date of delivery
- Response to your inquiry within 24 hours
- We provide support in Chinese, English, French, German, Japanese and Spanish
- Extensive multi-media technical resources to help you
- We investigate all quality concerns to ensure our products perform to the highest standards

If the product does not perform as described on this datasheet, we will offer a refund or replacement. For full details of the Abpromise, please visit <http://www.abcam.com/abpromise> or contact our technical team.

Terms and conditions

- Guarantee only valid for products bought direct from Abcam or one of our authorized distributors