

Product datasheet

Anti-CEBPE antibody ab59384

2 Images

Overview

Product name	Anti-CEBPE antibody
Description	Rabbit polyclonal to CEBPE
Specificity	This antibody detects endogenous levels of total CEBPE protein.
Tested applications	Suitable for: WB, IHC-P, ELISA
Species reactivity	Reacts with: Human
Immunogen	Synthesized non-phosphopeptide derived from human CEBPE around the phosphorylation site of threonine 74.
Positive control	Human brain tissue and extracts from HuvEc cells.

Properties

Form	Liquid
Storage instructions	Shipped at 4°C. Upon delivery aliquot and store at -20°C. Avoid freeze / thaw cycles.
Storage buffer	Preservative: 0.02% Sodium Azide Constituents: 50% Glycerol, PBS, 150mM Sodium chloride, pH 7.4
Purity	Immunogen affinity purified
Purification notes	The antibody was affinity-purified from rabbit antiserum by affinity chromatography using epitope-specific immunogen.
Clonality	Polyclonal
Isotype	IgG

Applications

Our [Abpromise guarantee](#) covers the use of **ab59384** in the following tested applications.

The application notes include recommended starting dilutions; optimal dilutions/concentrations should be determined by the end user.

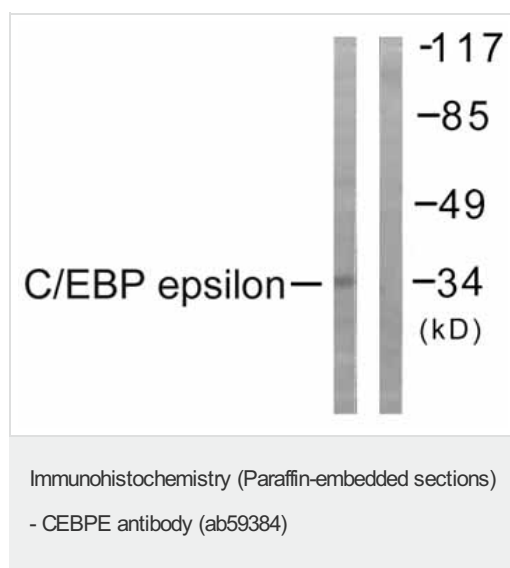
Application	Abreviews	Notes
WB		1/500 - 1/1000. Detects a band of approximately 34 kDa (predicted molecular weight: 31 kDa).
IHC-P		Use at an assay dependent concentration.

Application	Abreviews	Notes
ELISA		1/5000.

Target

Function	C/EBP are DNA-binding proteins that recognize two different motifs: the CCAAT homology common to many promoters and the enhanced core homology common to many enhancers.
Tissue specificity	Strongest expression occurs in promyelocyte and late-myeloblast-like cell lines.
Sequence similarities	Belongs to the bZIP family. C/EBP subfamily. Contains 1 bZIP domain.
Post-translational modifications	Phosphorylated.
Cellular localization	Nucleus.

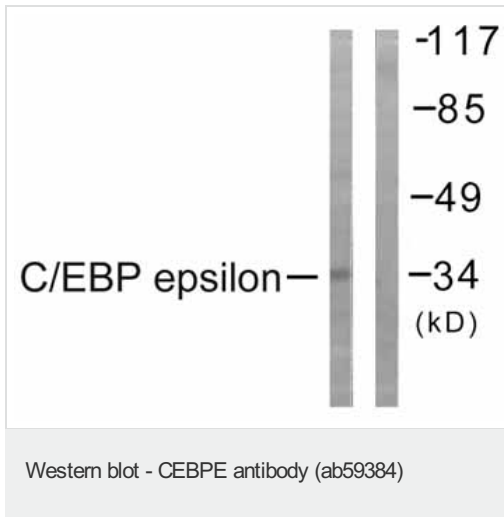
Images



Immunohistochemistry analysis of paraffin-embedded human brain tissue using ab59384 at a 1/50 dilution.

Left image un-treated.

Right image treated with peptide.



All lanes : Anti-CEBPE antibody (ab59384)
at 1/500 dilution

Lane 1 : Extracts from HuvEc cells, treated
with Insulin (0.01U /ml, 15mins).

Lane 2 : Extracts from HuvEc cells, treated
with Insulin (0.01U /ml, 15mins) plus peptide.

Predicted band size : 31 kDa

Observed band size : 34 kDa

Please note: All products are "FOR RESEARCH USE ONLY AND ARE NOT INTENDED FOR DIAGNOSTIC OR THERAPEUTIC USE"

Our Abpromise to you: Quality guaranteed and expert technical support

- Replacement or refund for products not performing as stated on the datasheet
- Valid for 12 months from date of delivery
- Response to your inquiry within 24 hours
- We provide support in Chinese, English, French, German, Japanese and Spanish
- Extensive multi-media technical resources to help you
- We investigate all quality concerns to ensure our products perform to the highest standards

If the product does not perform as described on this datasheet, we will offer a refund or replacement. For full details of the Abpromise, please visit <http://www.abcam.com/abpromise> or contact our technical team.

Terms and conditions

- Guarantee only valid for products bought direct from Abcam or one of our authorized distributors