


Product datasheet

Anti-CHD6 antibody ab114095

1 References 2 Images

Overview

Product name	Anti-CHD6 antibody
Description	Rabbit polyclonal to CHD6
Host species	Rabbit
Tested applications	Suitable for: WB, IP
Species reactivity	Reacts with: Human Predicted to work with: Chimpanzee, Gorilla, Orangutan 
Immunogen	Synthetic peptide, corresponding to a region between amino acids 2665- 2715 of Human CHD6 (NP_115597.3).
Positive control	Whole cell lysate from Hela cells.

Properties

Form	Liquid
Storage instructions	Shipped at 4°C. Upon delivery aliquot and store at -20°C. Avoid freeze / thaw cycles.
Storage buffer	Preservative: 0.09% Sodium azide Constituent: 99% Tris citrate/phosphate Note: pH: 7 to 8
Purity	Immunogen affinity purified
Purification notes	ab114095 was affinity purified using an epitope specific to CHD6 immobilized on solid support.
Clonality	Polyclonal
Isotype	IgG

Applications

Our [Abpromise guarantee](#) covers the use of **ab114095** in the following tested applications.

The application notes include recommended starting dilutions; optimal dilutions/concentrations should be determined by the end user.

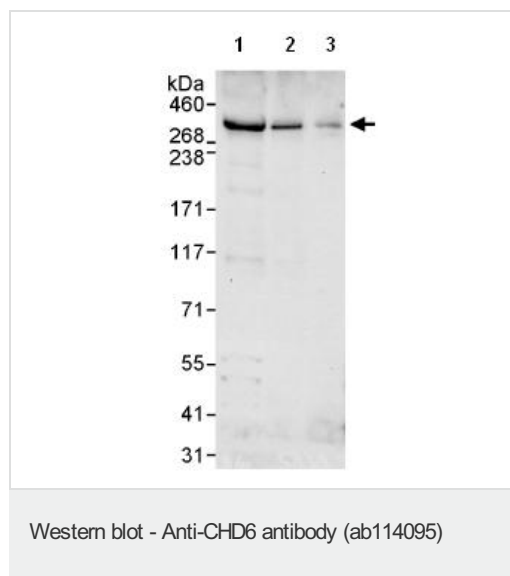
Application	Abreviews	Notes
WB		1/2000 - 1/10000. Predicted molecular weight: 305 kDa.

Application	Abreviews	Notes
IP		Use at 2-5 µg/mg of lysate.

Target

Function	Probable transcription regulator.
Tissue specificity	Ubiquitous.
Sequence similarities	Belongs to the SNF2/RAD54 helicase family. Contains 2 chromo domains. Contains 1 helicase ATP-binding domain. Contains 1 helicase C-terminal domain.
Post-translational modifications	Phosphorylated upon DNA damage, probably by ATM or ATR.
Cellular localization	Nucleus.

Images



All lanes : Anti-CHD6 antibody (ab114095) at 0.1 µg/ml

Lane 1 : Whole cell lysate from HeLa cells at 50 µg

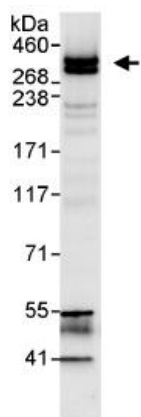
Lane 2 : Whole cell lysate from HeLa cells at 15 µg

Lane 3 : Whole cell lysate from HeLa cells at 5 µg

Developed using the ECL technique.

Predicted band size: 305 kDa

Exposure time: 30 seconds



Immunoprecipitation - Anti-CHD6 antibody
(ab114095)

ab114095, at 1 $\mu\text{g}/\text{ml}$, staining CHD6 in HeLa whole cell lysate immunoprecipitated using ab114095 at 3 $\mu\text{g}/\text{mg}$ lysate (1 mg for IP; 20% of IP loaded/lane). Detection: Chemiluminescence with an exposure time of 10 seconds.

Please note: All products are "FOR RESEARCH USE ONLY AND ARE NOT INTENDED FOR DIAGNOSTIC OR THERAPEUTIC USE"

Our Abpromise to you: Quality guaranteed and expert technical support

- Replacement or refund for products not performing as stated on the datasheet
- Valid for 12 months from date of delivery
- Response to your inquiry within 24 hours
- We provide support in Chinese, English, French, German, Japanese and Spanish
- Extensive multi-media technical resources to help you
- We investigate all quality concerns to ensure our products perform to the highest standards

If the product does not perform as described on this datasheet, we will offer a refund or replacement. For full details of the Abpromise, please visit <http://www.abcam.com/abpromise> or contact our technical team.

Terms and conditions

- Guarantee only valid for products bought direct from Abcam or one of our authorized distributors