

Product datasheet

Anti-CLECL1 antibody ab87569

1 Image

Overview

| | |
|----------------------------|--|
| Product name | Anti-CLECL1 antibody |
| Description | Rabbit polyclonal to CLECL1 |
| Host species | Rabbit |
| Tested applications | Suitable for: WB |
| Species reactivity | Reacts with: Human |
| Immunogen | Synthetic peptide from within residues: SLFLICAMAG DVVYADIKTV RTSPLELAFP LQRSVSFNFS TVHKSCPAKD, corresponding to internal sequence amino acids 72-121 of Human CLECL1 (NP_742001) Run BLAST with ExPASy Run BLAST with NCBI |
| Positive control | Placenta lysate |
| General notes | Store at -20°C. Avoid repeat freeze-thaw cycles. |

Properties

| | |
|-----------------------------|---|
| Form | Liquid |
| Storage instructions | Shipped at 4°C. Please see notes section. |
| Storage buffer | Preservative: None Constituents: 2% Sucrose, PBS |
| Purity | Immunogen affinity purified |
| Clonality | Polyclonal |
| Isotype | IgG |

Applications

Our [Abpromise guarantee](#) covers the use of **ab87569** in the following tested applications.

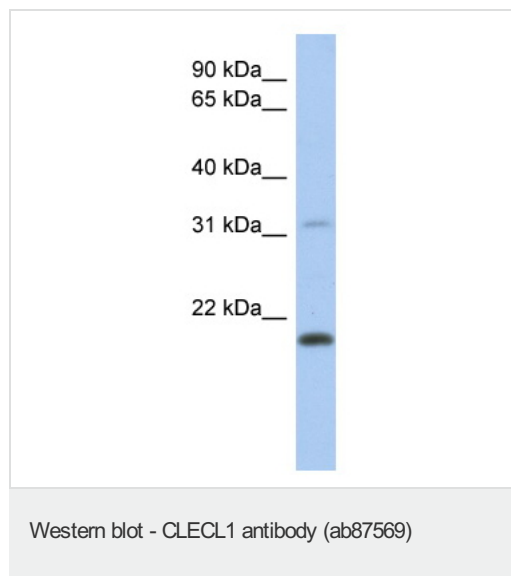
The application notes include recommended starting dilutions; optimal dilutions/concentrations should be determined by the end user.

| Application | Abreviews | Notes |
|-------------|-----------|--|
| WB | | Use a concentration of 1 µg/ml. Predicted molecular weight: 19 kDa. Good results were obtained when blocked with 5% non-fat dry milk in 0.05% PBS-T. |

Target

| | |
|------------------------------|--|
| Relevance | CLECL1 is a type II transmembrane, C-type lectin-like protein expressed on dendritic cells (DCs) and B cells. It interacts with subsets of T cells as a costimulatory molecule that enhances interleukin-4 (IL4) production. |
| Cellular localization | Cell membrane; Single-pass type II membrane protein. |

Images



Anti-CLECL1 antibody (ab87569) at 1 μ g/ml
(in 5% skim milk / PBS buffer) + Human
placenta lysate at 10 μ g

Secondary

HRP conjugated anti-Rabbit IgG at 1/50000
dilution

Predicted band size: 19 kDa

Observed band size: ~19 kDa

Please note: All products are "FOR RESEARCH USE ONLY AND ARE NOT INTENDED FOR DIAGNOSTIC OR THERAPEUTIC USE"

Our Abpromise to you: Quality guaranteed and expert technical support

- Replacement or refund for products not performing as stated on the datasheet
- Valid for 12 months from date of delivery
- Response to your inquiry within 24 hours
- We provide support in Chinese, English, French, German, Japanese and Spanish
- Extensive multi-media technical resources to help you
- We investigate all quality concerns to ensure our products perform to the highest standards

If the product does not perform as described on this datasheet, we will offer a refund or replacement. For full details of the Abpromise, please visit <http://www.abcam.com/abpromise> or contact our technical team.

Terms and conditions

- Guarantee only valid for products bought direct from Abcam or one of our authorized distributors