

Product datasheet

Anti-CMG1 antibody ab96660

1 References 1 Image

Overview

<b>Product name</b>	Anti-CMG1 antibody
<b>Description</b>	Rabbit polyclonal to CMG1
<b>Tested applications</b>	<b>Suitable for:</b> WB
<b>Species reactivity</b>	<b>Reacts with:</b> Human
<b>Immunogen</b>	Synthetic peptide, corresponding to a region within amino acids 538-600 of Human CMG1 (NP_001092692)
<b>Positive control</b>	A431 whole cell lysate. HepG2 and Raji cell lysate.

Properties

<b>Form</b>	Liquid
<b>Storage instructions</b>	Shipped at 4°C. Upon delivery aliquot. Store at -20°C or -80°C. Avoid freeze / thaw cycle.
<b>Storage buffer</b>	Preservative: 0.01% Thimerosal (merthiolate) Constituents: 10% Glycerol, 0.1M Tris, 0.1M Glycine, pH 7.0
<b>Purity</b>	Immunogen affinity purified
<b>Clonality</b>	Polyclonal
<b>Isotype</b>	IgG

Applications

Our [Abpromise guarantee](#) covers the use of **ab96660** in the following tested applications.

The application notes include recommended starting dilutions; optimal dilutions/concentrations should be determined by the end user.

Application	Abreviews	Notes
WB		1/500 - 1/3000. Predicted molecular weight: 69 kDa.

Target

**Tissue specificity** Highly expressed in adult and fetal kidney and expressed at lower level in adult heart, placenta,

lung, liver and pancreas, and in fetal heart, lung and liver. Little to no expression was detected in adult brain and skeletal muscle or in fetal brain, thymus and spleen.

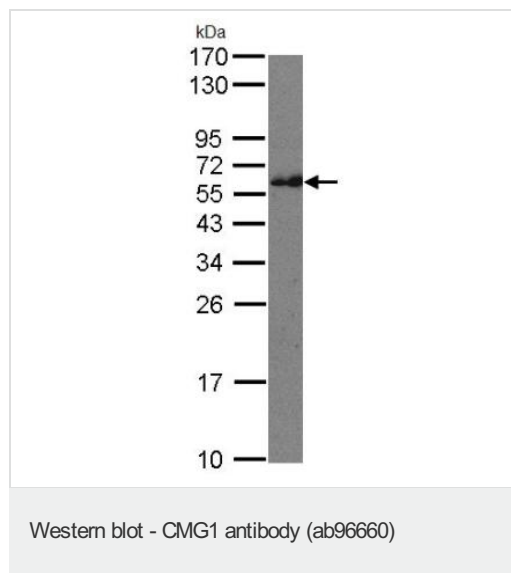
#### Post-translational modifications

Phosphorylated upon DNA damage, probably by ATM or ATR.

#### Cellular localization

Cytoplasmic vesicle. Intracellular vesicular compartment.

### Images



Anti-CMG1 antibody (ab96660) at 1/500 dilution + A431 whole cell lysate at 30 µg

**Predicted band size : 69 kDa**

**Please note:** All products are "FOR RESEARCH USE ONLY AND ARE NOT INTENDED FOR DIAGNOSTIC OR THERAPEUTIC USE"

### Our Abpromise to you: Quality guaranteed and expert technical support

- Replacement or refund for products not performing as stated on the datasheet
- Valid for 12 months from date of delivery
- Response to your inquiry within 24 hours
- We provide support in Chinese, English, French, German, Japanese and Spanish
- Extensive multi-media technical resources to help you
- We investigate all quality concerns to ensure our products perform to the highest standards

If the product does not perform as described on this datasheet, we will offer a refund or replacement. For full details of the Abpromise, please visit <http://www.abcam.com/abpromise> or contact our technical team.

### Terms and conditions

- Guarantee only valid for products bought direct from Abcam or one of our authorized distributors