

Product datasheet

Anti-COXIV Isoform 2 antibody ab70112

4 References 2 Images

Overview

Product name	Anti-COXIV Isoform 2 antibody
Description	Rabbit polyclonal to COXIV Isoform 2
Host species	Rabbit
Specificity	ab70112 detects endogenous levels of total COXIV Isoform 2 protein.
Tested applications	Suitable for: ELISA, WB, ICC/IF
Species reactivity	Reacts with: Mouse, Rat, Human
Immunogen	Synthetic peptide corresponding to Human COXIV Isoform 2 aa 31-80 (internal sequence). Database link: Q96KJ9
Positive control	COS7 cells and K562 cell extracts treated with insulin (0.01U/ml, 15mins).

Properties

Form	Liquid
Storage instructions	Shipped at 4°C. Store at -20°C. Stable for 12 months at -20°C.
Storage buffer	Preservative: 0.02% Sodium Azide Constituents: 50% Glycerol, PBS (without Mg ²⁺ and Ca ²⁺), 150mM Sodium chloride, pH 7.4
Purity	Immunogen affinity purified
Purification notes	ab70112 was affinity-purified from rabbit antiserum by affinity-chromatography using epitope-specific immunogen
Clonality	Polyclonal
Isotype	IgG

Applications

Our [Abpromise guarantee](#) covers the use of **ab70112** in the following tested applications.

The application notes include recommended starting dilutions; optimal dilutions/concentrations should be determined by the end user.

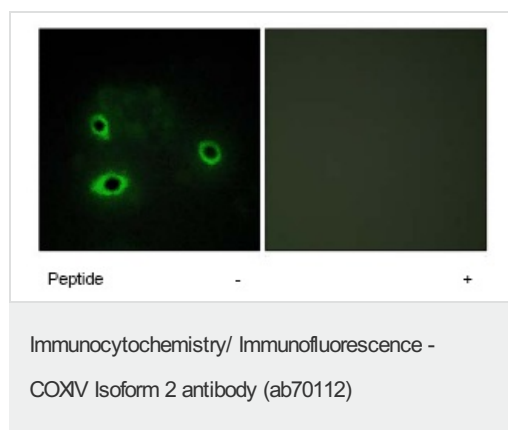
Application	Abreviews	Notes
ELISA		1/10000.

Application	Abreviews	Notes
WB		1/500 - 1/1000. Detects a band of approximately 20 kDa (predicted molecular weight: 20 kDa).
ICC/IF		1/500 - 1/1000.

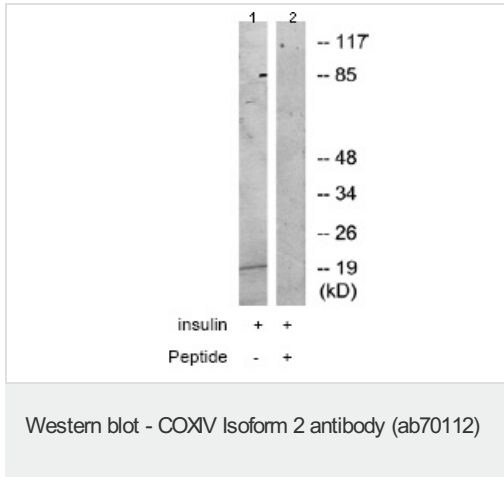
Target

Function	This protein is one of the nuclear-coded polypeptide chains of cytochrome c oxidase, the terminal oxidase in mitochondrial electron transport.
Tissue specificity	Highly expressed in lung.
Involvement in disease	Defects in COX4I2 are the cause of exocrine pancreatic insufficiency dyserythropoietic anemia and calvarial hyperostosis (EPIDACH) [MIM:612714]. Patients present with pancreatic insufficiency, intestinal malabsorption, failure to thrive, and anemia soon after birth.
Sequence similarities	Belongs to the cytochrome c oxidase IV family.
Cellular localization	Mitochondrion inner membrane.

Images



ab70112 at 1/500 dilution staining COXIV Isoform 2 in COS7 cells by Immunofluorescence, in the absence or presence of the immunising peptide.



All lanes : Anti-COXIV Isoform 2 antibody (ab70112) at 1/500 dilution

Lane 1 : K562 cell extracts treated with insulin (0.01U/ml, 15mins)

Lane 2 : K562 cell extracts treated with insulin (0.01U/ml, 15mins) with immunising peptide at 10 µg

Lysates/proteins at 30 µg per lane.

Predicted band size: 20 kDa

Observed band size: 20 kDa

Please note: All products are "FOR RESEARCH USE ONLY AND ARE NOT INTENDED FOR DIAGNOSTIC OR THERAPEUTIC USE"

Our Abpromise to you: Quality guaranteed and expert technical support

- Replacement or refund for products not performing as stated on the datasheet
- Valid for 12 months from date of delivery
- Response to your inquiry within 24 hours
- We provide support in Chinese, English, French, German, Japanese and Spanish
- Extensive multi-media technical resources to help you
- We investigate all quality concerns to ensure our products perform to the highest standards

If the product does not perform as described on this datasheet, we will offer a refund or replacement. For full details of the Abpromise, please visit <http://www.abcam.com/abpromise> or contact our technical team.

Terms and conditions

- Guarantee only valid for products bought direct from Abcam or one of our authorized distributors