


Product datasheet

Anti-CRSP7 antibody ab114101

1 Image

Overview

Product name	Anti-CRSP7 antibody
Description	Rabbit polyclonal to CRSP7
Host species	Rabbit
Tested applications	Suitable for: IP Unsuitable for: WB
Species reactivity	Reacts with: Human Predicted to work with: Mouse, Rat, Horse, Chicken, Cow, Dog, Turkey, Pig, Xenopus laevis, Chimpanzee, Rhesus monkey, Gorilla, Orangutan 
Immunogen	Synthetic peptide, corresponding to a region within amino acids 543 - 593 of Human CRSP7 (NP_004822.2).
Positive control	Whole cell lysate from HeLa cells.

Properties

Form	Liquid
Storage instructions	Shipped at 4°C. Upon delivery aliquot and store at -20°C. Avoid freeze / thaw cycles.
Storage buffer	Preservative: 0.09% Sodium azide Constituent: 99% Tris citrate/phosphate Note: pH: 7 to 8
Purity	Immunogen affinity purified
Purification notes	ab114101 was affinity purified using an epitope specific to CRSP7 immobilized on solid support.
Clonality	Polyclonal
Isotype	IgG

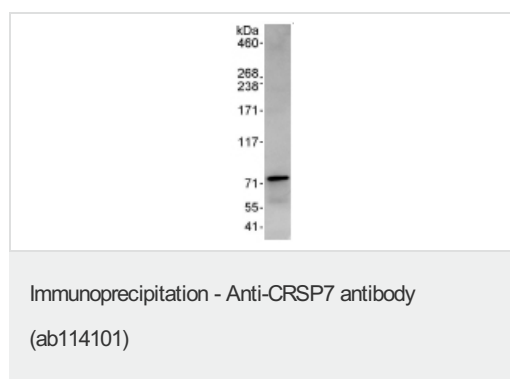
Applications

Our [Abpromise guarantee](#) covers the use of **ab114101** in the following tested applications.

The application notes include recommended starting dilutions; optimal dilutions/concentrations should be determined by the end user.

Application	Abreviews	Notes
IP		Use at 5-10 µg/mg of lysate.
Application notes	Is unsuitable for WB.	
Target		
Function	Component of the Mediator complex, a coactivator involved in the regulated transcription of nearly all RNA polymerase II-dependent genes. Mediator functions as a bridge to convey information from gene-specific regulatory proteins to the basal RNA polymerase II transcription machinery. Mediator is recruited to promoters by direct interactions with regulatory proteins and serves as a scaffold for the assembly of a functional preinitiation complex with RNA polymerase II and the general transcription factors.	
Sequence similarities	Belongs to the Mediator complex subunit 26 family. Contains 1 TFIIIS N-terminal domain.	
Cellular localization	Nucleus.	

Images



Rabbit anti-CRSP7 antibody, at 0.4 µg/ml, staining CRSP7 in HeLa whole cell lysate immunoprecipitated using ab114101 at 10 µg/mg lysate (1 mg for IP; 20% of IP loaded/lane). Detection: Chemiluminescence with an exposure time of 15 seconds.

Please note: All products are "FOR RESEARCH USE ONLY AND ARE NOT INTENDED FOR DIAGNOSTIC OR THERAPEUTIC USE"

Our Abpromise to you: Quality guaranteed and expert technical support

- Replacement or refund for products not performing as stated on the datasheet
- Valid for 12 months from date of delivery
- Response to your inquiry within 24 hours
- We provide support in Chinese, English, French, German, Japanese and Spanish
- Extensive multi-media technical resources to help you
- We investigate all quality concerns to ensure our products perform to the highest standards

If the product does not perform as described on this datasheet, we will offer a refund or replacement. For full details of the Abpromise, please visit <http://www.abcam.com/abpromise> or contact our technical team.

Terms and conditions

- Guarantee only valid for products bought direct from Abcam or one of our authorized distributors