


Product datasheet

Anti-CSTF3 antibody ab74407

[2 Images](#)

Overview

Product name	Anti-CSTF3 antibody
Description	Rabbit polyclonal to CSTF3
Host species	Rabbit
Tested applications	Suitable for: IHC-P
Species reactivity	Reacts with: Mouse, Human Predicted to work with: Rat, Rabbit, Horse, Chicken, Guinea pig, Cow, Dog, Turkey, Chimpanzee, Rhesus monkey, Gorilla, Orangutan, Platypus 
Immunogen	Synthetic peptide corresponding to a region between residues 667 and 717 of human CSTF3 (NP_001317.1)
Positive control	Human prostate carcinoma and mouse teratoma tissue. Other suitable positive controls are: Breast Carcinoma, Colon Carcinoma, Linitis Plastica Stomach Cancer, Non-Small Cell Lung Cancer, Ovarian Carcinoma, Pancreatic Islet Cell Tumor, Small Cell Lung Cancer, Stomach Adenocarcinoma and Testicular Seminoma tissues.

Properties

Form	Liquid
Storage instructions	Shipped at 4°C. Upon delivery aliquot and store at -20°C. Avoid freeze / thaw cycles.
Storage buffer	Preservative: 0.09% Sodium Azide Constituents: 0.1% BSA, Tris buffered saline
Purity	Immunogen affinity purified
Purification notes	ab74407 was affinity purified using an epitope specific to CSTF3 immobilized on solid support.
Clonality	Polyclonal
Isotype	IgG

Applications

Our [Abpromise guarantee](#) covers the use of **ab74407** in the following tested applications.

The application notes include recommended starting dilutions; optimal dilutions/concentrations should be determined by the end user.

Application	Abreviews	Notes
-------------	-----------	-------

IHC-P

Application notes

IHC-P: 1/100 - 1/500.
Epitope exposure is recommended.
Epitope exposure with citrate buffer will enhance staining.
ab74407 is likely to work with frozen sections.

Not yet tested in other applications.
Optimal dilutions/concentrations should be determined by the end user.

Target

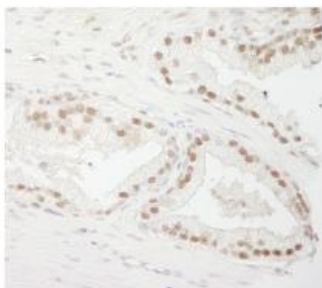
Relevance

CSTF3 (cleavage stimulation factor subunit 3) is required for polyadenylation and 3'-end cleavage of mammalian pre-mRNAs and is part of the CSTF complex. The CSTF complex is composed of CSTF1 (50 kDa subunit), CSTF2 (64 kDa subunit) and CSTF3 (77 kDa subunit). CSTF3 functions as a homodimer and interacts directly with CSTF1 and CSTF2.

Cellular localization

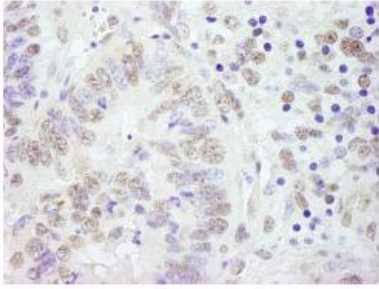
Nuclear

Images



ab74407, at 1/250 dilution, staining CSTF3 in formalin fixed, paraffin embedded human prostate carcinoma tissue by Immunohistochemistry. Detection: DAB staining.

Immunohistochemistry (Formalin/PFA-fixed paraffin-embedded sections) - Anti-CSTF3 antibody (ab74407)



ab74407, at 1/250 dilution, staining CSTF3 in formalin fixed, paraffin embedded mouse teratoma tissue by Immunohistochemistry. Detection: DAB staining.

Immunohistochemistry (Formalin/PFA-fixed paraffin-embedded sections) - Anti-CSTF3 antibody (ab74407)

Please note: All products are "FOR RESEARCH USE ONLY AND ARE NOT INTENDED FOR DIAGNOSTIC OR THERAPEUTIC USE"

Our Abpromise to you: Quality guaranteed and expert technical support

- Replacement or refund for products not performing as stated on the datasheet
- Valid for 12 months from date of delivery
- Response to your inquiry within 24 hours
- We provide support in Chinese, English, French, German, Japanese and Spanish
- Extensive multi-media technical resources to help you
- We investigate all quality concerns to ensure our products perform to the highest standards

If the product does not perform as described on this datasheet, we will offer a refund or replacement. For full details of the Abpromise, please visit <http://www.abcam.com/abpromise> or contact our technical team.

Terms and conditions

- Guarantee only valid for products bought direct from Abcam or one of our authorized distributors