


Product datasheet

Anti-CXCR3 antibody ab71864

3 Abreviews 1 References 2 Images

Overview

<b>Product name</b>	Anti-CXCR3 antibody
<b>Description</b>	Rabbit polyclonal to CXCR3
<b>Host species</b>	Rabbit
<b>Tested applications</b>	<b>Suitable for:</b> WB, ICC/IF
<b>Species reactivity</b>	<b>Reacts with:</b> Human <b>Predicted to work with:</b> Mouse, Rat, Cow, Dog, Pig 
<b>Immunogen</b>	Synthetic peptide conjugated to KLH derived from within residues 150 - 250 of Human CXCR3. Read Abcam's proprietary immunogen policy (Peptide available as <a href="#">ab74828</a> .)
<b>Positive control</b>	This antibody gave a positive signal in the following human tissue lysates: Colon, Small Intestine, Lymph Node and Heart IF/ICC: HeK293 cell line

Properties

<b>Form</b>	Liquid
<b>Storage instructions</b>	Shipped at 4°C. Store at +4°C short term (1-2 weeks). Upon delivery aliquot. Store at -20°C or -80°C. Avoid freeze / thaw cycle.
<b>Storage buffer</b>	Preservative: 0.02% Sodium Azide Constituents: 1% BSA, PBS, pH 7.4
<b>Purity</b>	Immunogen affinity purified
<b>Clonality</b>	Polyclonal
<b>Isotype</b>	IgG

Applications

Our [Abpromise guarantee](#) covers the use of **ab71864** in the following tested applications.

The application notes include recommended starting dilutions; optimal dilutions/concentrations should be determined by the end user.

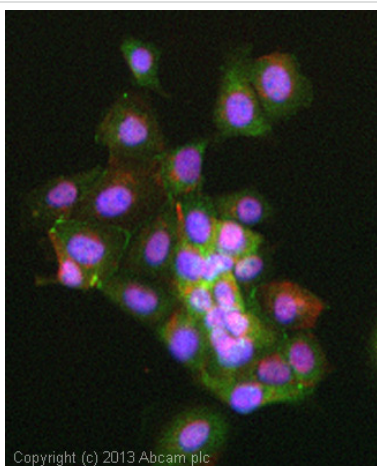
Application	Abreviews	Notes
WB		Use a concentration of 1 µg/ml. Detects a band of approximately 70 kDa (predicted molecular weight: 41 kDa).

Application	Abreviews	Notes
ICC/IF		Use a concentration of 1 µg/ml.

## Target

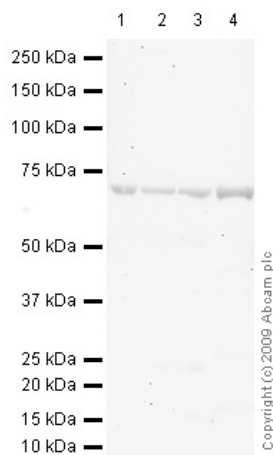
<b>Function</b>	<p>Receptor for CXCL9, CXCL10 and CXCL11 and mediates the proliferation of human mesangial cells (HMC).</p> <p>Isoform 2 is a receptor for CXCL4 and also mediates the inhibitory activities of CXCL9, CXCL10 and CXCL11 on the growth of human microvascular endothelial cells (HMVEC). May play a role in angiogenesis.</p> <p>Isoform 3 mediates the activity of CXCL11.</p>
<b>Tissue specificity</b>	Isoform 1 and isoform 2 are mainly expressed in heart, kidney, liver and skeletal muscle. Isoform 1 is also expressed in placenta.
<b>Sequence similarities</b>	Belongs to the G-protein coupled receptor 1 family.
<b>Cellular localization</b>	Cell membrane.

## Images



Immunocytochemistry/ Immunofluorescence - Anti-CXCR3 antibody (ab71864)

ICC/IF image of ab71864 stained HEK293 cells. The cells were 4% formaldehyde fixed (10 min) and then incubated in 1%BSA / 10% normal goat serum / 0.3M glycine in 0.1% PBS-Tween for 1h to permeabilise the cells and block non-specific protein-protein interactions. The cells were then incubated with the antibody (ab71864, 1 µg/ml) overnight at +4°C. The secondary antibody (green) was [ab96899](#), DyLight® 488 goat anti-rabbit IgG (H+L) used at a 1/250 dilution for 1h. Alexa Fluor® 594 WGA was used to label plasma membranes (red) at a 1/200 dilution for 1h. DAPI was used to stain the cell nuclei (blue) at a concentration of 1.43µM.



Western blot - Anti-CXCR3 antibody (ab71864)

**All lanes :** Anti-CXCR3 antibody (ab71864)

at 1 µg/ml

**Lane 1 :** Human colon tissue lysate - total protein (ab30051)

**Lane 2 :** Human small intestine tissue lysate - total protein (ab29276)

**Lane 3 :** Human lymph node tissue lysate - total protein (ab29871)

**Lane 4 :** Human heart tissue lysate - total protein (ab29431)

Lysates/proteins at 10 µg per lane.

### Secondary

**All lanes :** Goat polyclonal to Rabbit IgG -

H&L - Pre-Adsorbed (HRP) at 1/3000 dilution

Performed under reducing conditions.

**Predicted band size:** 41 kDa

**Observed band size:** 70 kDa

**Exposure time:** 20 minutes

Our observed 70kDa band is supported by the following

publications: <http://www.jbc.org/content/279/29>,

**Please note:** All products are "FOR RESEARCH USE ONLY AND ARE NOT INTENDED FOR DIAGNOSTIC OR THERAPEUTIC USE"

### Our Abpromise to you: Quality guaranteed and expert technical support

- Replacement or refund for products not performing as stated on the datasheet
- Valid for 12 months from date of delivery
- Response to your inquiry within 24 hours
- We provide support in Chinese, English, French, German, Japanese and Spanish
- Extensive multi-media technical resources to help you
- We investigate all quality concerns to ensure our products perform to the highest standards

If the product does not perform as described on this datasheet, we will offer a refund or replacement. For full details of the Abpromise,

please visit <http://www.abcam.com/abpromise> or contact our technical team.

## Terms and conditions

---

- Guarantee only valid for products bought direct from Abcam or one of our authorized distributors