

Product datasheet

Anti-Cannabinoid Receptor I antibody ab40860

★★★★★ 2 Abreviews 1 References 1 Image

Overview

Product name	Anti-Cannabinoid Receptor I antibody
Description	Goat polyclonal to Cannabinoid Receptor I
Host species	Goat
Specificity	This antibody is expected to recognise both reported isoforms (NP_057167.2 and NP_149421.1).
Tested applications	Suitable for: WB
Species reactivity	Reacts with: Mouse, Human Predicted to work with: Rat, Dog
Immunogen	Synthetic peptide: HTSEDGKVQVTRPDQ , corresponding to Internal sequence amino acids 320-334 of Human Cannabinoid Receptor I Run BLAST with Run BLAST with
Positive control	Rat brain lysate. Lysate prepared from transfected HEK293 cells over-expressing Cannabinoid Receptor I.

Properties

Form	Liquid
Storage instructions	Shipped at 4°C. Upon delivery aliquot and store at -20°C. Avoid freeze / thaw cycles.
Storage buffer	Preservative: 0.02% Sodium Azide Constituents: 0.5% BSA, Tris saline, pH 7.3
Purity	Immunogen affinity purified
Purification notes	Purified from goat serum by ammonium sulphate precipitation followed by antigen affinity chromatography using the immunizing peptide.
Clonality	Polyclonal
Isotype	IgG

Applications

Our [Abpromise guarantee](#) covers the use of **ab40860** in the following tested applications.

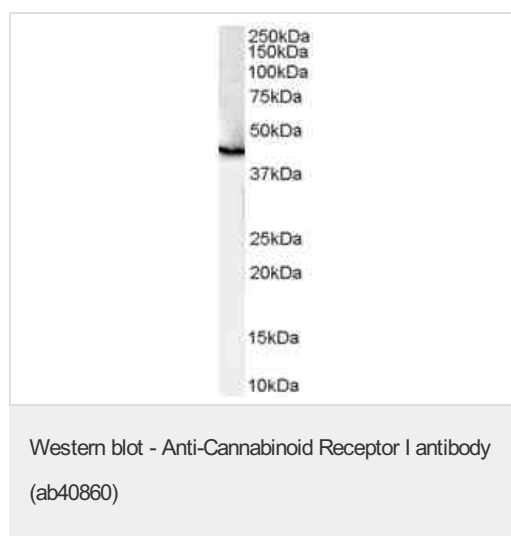
The application notes include recommended starting dilutions; optimal dilutions/concentrations should be determined by the end user.

Application	Abreviews	Notes
WB		Use a concentration of 1 - 3 µg/ml. Detects a band of approximately 65 kDa (predicted molecular weight: 53 kDa). 65kDa band detected in rat brain lysate. The observed molecular weight corresponds to earlier findings in literature with different antibodies (Porcella et al, Eur J Neurosci. 2000 Mar;12(3):1123-7. PMID: 10762343).

Target

Function	Involved in cannabinoid-induced CNS effects. Acts by inhibiting adenylate cyclase. Could be a receptor for anandamide. Inhibits L-type Ca(2+) channel current. Isoform 2 and isoform 3 have altered ligand binding.
Tissue specificity	Widely expressed.
Sequence similarities	Belongs to the G-protein coupled receptor 1 family.
Cellular localization	Cell membrane.

Images



Anti-Cannabinoid Receptor I antibody (ab40860) at 1 µg/ml + Human Brain lysate (35µg protein in RIPA buffer).

Predicted band size: 53 kDa

Observed band size: 46 kDa

Primary incubation was 1 hour. Detected by chemiluminescence.

Please note: All products are "FOR RESEARCH USE ONLY AND ARE NOT INTENDED FOR DIAGNOSTIC OR THERAPEUTIC USE"

Our Abpromise to you: Quality guaranteed and expert technical support

- Replacement or refund for products not performing as stated on the datasheet
- Valid for 12 months from date of delivery
- Response to your inquiry within 24 hours
- We provide support in Chinese, English, French, German, Japanese and Spanish
- Extensive multi-media technical resources to help you
- We investigate all quality concerns to ensure our products perform to the highest standards

If the product does not perform as described on this datasheet, we will offer a refund or replacement. For full details of the Abpromise, please visit <http://www.abcam.com/abpromise> or contact our technical team.

Terms and conditions

- Guarantee only valid for products bought direct from Abcam or one of our authorized distributors