


Product datasheet

Anti-Caspase-12 antibody ab18766

9 References 4 Images

Overview

Product name	Anti-Caspase-12 antibody
Description	Rabbit polyclonal to Caspase-12
Host species	Rabbit
Specificity	Recognises full-length and cleaved fragment of Caspase-12
Tested applications	Suitable for: IHC-P, WB, ICC/IF
Species reactivity	Reacts with: Mouse, Rat Predicted to work with: Human 
Immunogen	Synthetic peptide corresponding to Mouse Caspase-12. Database link: Q6UXS9 (Peptide available as ab38274)
Positive control	Spleen tissue lysate

Properties

Form	Liquid
Storage instructions	Shipped at 4°C. Store at +4°C short term (1-2 weeks). Upon delivery aliquot. Store at -20°C. Avoid freeze / thaw cycle.
Storage buffer	Preservative: 0.02% Sodium Azide Constituents: 50% Glycerol, 1% BSA, PBS, pH 7.2
Purity	Protein A purified
Clonality	Polyclonal
Isotype	IgG

Applications

Our [Abpromise guarantee](#) covers the use of **ab18766** in the following tested applications.

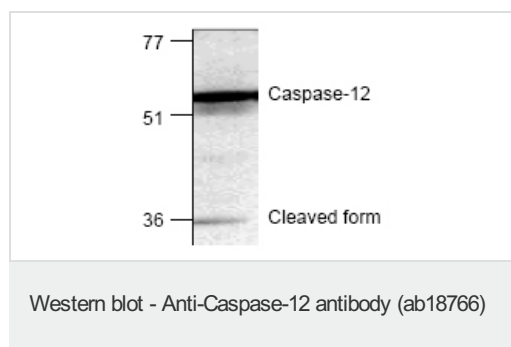
The application notes include recommended starting dilutions; optimal dilutions/concentrations should be determined by the end user.

Application	Abreviews	Notes
IHC-P		Use a concentration of 1 µg/ml. Perform heat mediated antigen retrieval before commencing with IHC staining protocol.
WB		Use a concentration of 0.5 - 4 µg/ml. Detects procaspase 12 (55 kDa) and cleavage caspase 12 (36 kDa).
ICC/IF		Use a concentration of 1 µg/ml.

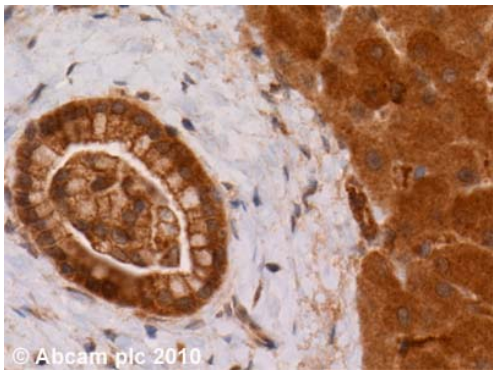
Target

Function	Has no protease activity. May reduce cytokine release in response to bacterial lipopolysaccharide during infections. Reduces activation of NF-kappa-B in response to TNF.
Tissue specificity	Detected in heart, kidney, liver, lung, pancreas, small intestine, spleen, stomach, thymus and testis.
Sequence similarities	Belongs to the peptidase C14A family. Contains 1 CARD domain.

Images



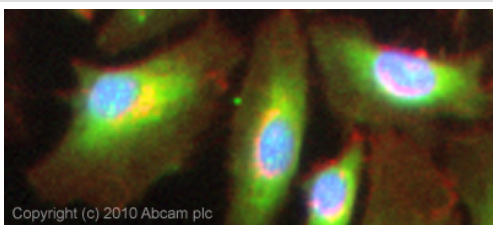
Anti-Caspase-12 antibody (ab18766) +
Mouse spleen tissue lysate



Immunohistochemistry (Formalin/PFA-fixed paraffin-embedded sections) - Anti-Caspase-12 antibody (ab18766)

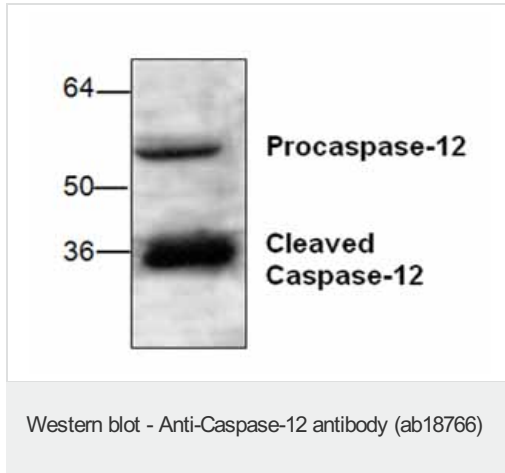
ab18766 (1 µg/ml) staining caspase-12 in human liver using an automated system (DAKO Autostainer Plus). Using this protocol there is strong staining of the cytoplasm and nuclei in hepatic arteries and plates of hepatic cells.

Sections were rehydrated and antigen retrieved with the Dako 3 in 1 AR buffers EDTA pH 9.0 in a DAKO PT link. Slides were peroxidase blocked in 3% H₂O₂ in methanol for 10 mins. They were then blocked with Dako Protein block for 10 minutes (containing casein 0.25% in PBS) then incubated with primary antibody for 20 min and detected with Dako envision flex amplification kit for 30 minutes. Colorimetric detection was completed with Diaminobenzidine for 5 minutes. Slides were counterstained with Haematoxylin and coverslipped under DePeX. Please note that, for manual staining, optimization of primary antibody concentration and incubation time is recommended. Signal amplification may be required.



Immunocytochemistry/ Immunofluorescence - Anti-Caspase-12 antibody (ab18766)

ICC/IF image of ab18766 stained HeLa cells. The cells were 100% methanol fixed (5 min) and then incubated in 1%BSA / 10% normal goat serum / 0.3M glycine in 0.1% PBS-Tween for 1h to permeabilise the cells and block non-specific protein-protein interactions. The cells were then incubated with the antibody (ab18766, 1 µg/ml) overnight at +4°C. The secondary antibody (green) was Alexa Fluor® 488 goat anti-rabbit IgG (H+L) used at a 1:1000 dilution for 1h. Alexa Fluor® 594 WGA was used to label plasma membranes (red) at a 1:200 dilution for 1h. DAPI was used to stain the cell nuclei (blue) at a concentration of 1.43 µM.



Anti-Caspase-12 antibody (ab18766) + Rat
kidney tissue lysate

Please note: All products are "FOR RESEARCH USE ONLY AND ARE NOT INTENDED FOR DIAGNOSTIC OR THERAPEUTIC USE"

Our Abpromise to you: Quality guaranteed and expert technical support

- Replacement or refund for products not performing as stated on the datasheet
- Valid for 12 months from date of delivery
- Response to your inquiry within 24 hours
- We provide support in Chinese, English, French, German, Japanese and Spanish
- Extensive multi-media technical resources to help you
- We investigate all quality concerns to ensure our products perform to the highest standards

If the product does not perform as described on this datasheet, we will offer a refund or replacement. For full details of the Abpromise, please visit <http://www.abcam.com/abpromise> or contact our technical team.

Terms and conditions

- Guarantee only valid for products bought direct from Abcam or one of our authorized distributors