


Product datasheet

Anti-Connexin 45 / GJA7 antibody [5B9.2] ab78408

1 Abreviews 1 References 2 Images

Overview

Product name	Anti-Connexin 45 / GJA7 antibody [5B9.2]
Description	Mouse monoclonal [5B9.2] to Connexin 45 / GJA7
Host species	Mouse
Tested applications	Suitable for: Flow Cyt, WB, ICC
Species reactivity	Reacts with: Rat, Rabbit, Human Predicted to work with: Mouse, Cow, Dog, Pig, Chinese hamster 
Immunogen	Synthetic peptide: QAYSHQNNPHGPRE conjugated to KLH, corresponding to amino acids 354-367 of Human Connexin 45/ GJA7 Run BLAST with Run BLAST with
Epitope	Near C terminal, cytoplasmic.
Positive control	Connexin 45 / GJA7 transfected rat C6 cells.
General notes	Abcam is committed to meeting high standards of ethical manufacturing and has decided to discontinue this product by June 2019 as it has been generated by the ascites method. We are sorry for any inconvenience this may cause.

Properties

Form	Liquid
Storage instructions	Store at +4°C short term (1-2 weeks). Store at -20°C or -80°C. Avoid freeze / thaw cycle.
Storage buffer	Preservative: 0.1% Sodium Azide Constituents: 0.25M Sodium chloride, 0.02M PBS, pH 7.6
Purity	Protein A purified
Clonality	Monoclonal
Clone number	5B9.2
Isotype	IgG1

Applications

Our [Abpromise guarantee](#) covers the use of **ab78408** in the following tested applications.

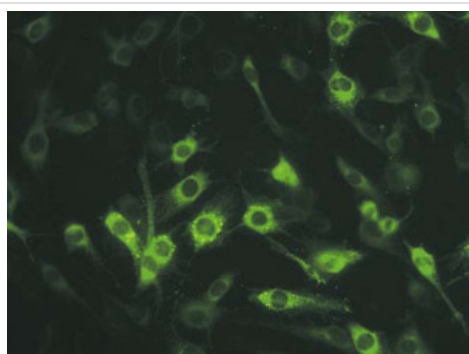
The application notes include recommended starting dilutions; optimal dilutions/concentrations should be determined by the end user.

Application	Abreviews	Notes
Flow Cyt		Use 1-2µg for 10 ⁶ cells. ab170190 -Mouse monoclonal IgG1, is suitable for use as an isotype control with this antibody.
WB		Use at an assay dependent concentration. Detects a band of approximately 45 kDa (predicted molecular weight: 45 kDa).
ICC		Use at an assay dependent concentration.

Target

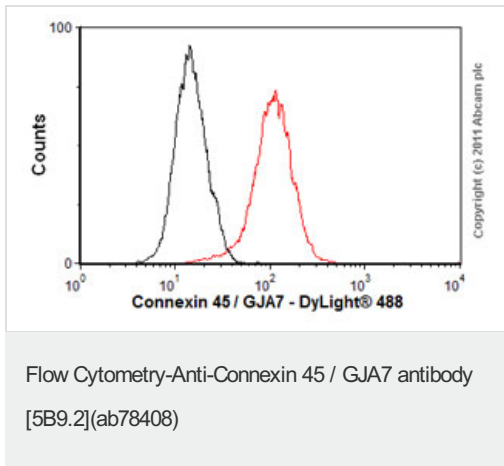
Function	One gap junction consists of a cluster of closely packed pairs of transmembrane channels, the connexons, through which materials of low MW diffuse from one cell to a neighboring cell.
Sequence similarities	Belongs to the connexin family. Gamma-type subfamily.
Cellular localization	Cell membrane. Cell junction > gap junction.

Images



ab78408 staining Connexin 45 / GJA7 transfected rat C6 cells by Immunocytochemistry.

Immunocytochemistry - Connexin 45 / GJA7 antibody [5B9.2] (ab78408)



Overlay histogram showing HeLa cells stained with ab78408 (red line). The cells were fixed with 80% methanol (5 min) and then permeabilized with 0.1% PBS-Tween for 20 min. The cells were then incubated in 1x PBS / 10% normal goat serum / 0.3M glycine to block non-specific protein-protein interactions followed by the antibody (ab78408, 1µg/1x10⁶ cells) for 30 min at 22°C. The secondary antibody used was DyLight® 488 goat anti-mouse IgG (H+L) (ab96879) at 1/500 dilution for 30 min at 22°C. Isotype control antibody (black line) was mouse IgG1 [ICIGG1] (ab91353, 2µg/1x10⁶ cells) used under the same conditions. Acquisition of >5,000 events was performed. This antibody gave a positive result in HeLa cells fixed with 4% paraformaldehyde (10 min)/permeabilized in 0.1% PBS-Tween for 20 min used under the same conditions.

Please note: All products are "FOR RESEARCH USE ONLY AND ARE NOT INTENDED FOR DIAGNOSTIC OR THERAPEUTIC USE"

Our Abpromise to you: Quality guaranteed and expert technical support

- Replacement or refund for products not performing as stated on the datasheet
- Valid for 12 months from date of delivery
- Response to your inquiry within 24 hours
- We provide support in Chinese, English, French, German, Japanese and Spanish
- Extensive multi-media technical resources to help you
- We investigate all quality concerns to ensure our products perform to the highest standards

If the product does not perform as described on this datasheet, we will offer a refund or replacement. For full details of the Abpromise, please visit <http://www.abcam.com/abpromise> or contact our technical team.

Terms and conditions

- Guarantee only valid for products bought direct from Abcam or one of our authorized distributors