

Product datasheet

Anti-Cpn10 antibody [EPR4476] ab108600

Recombinant **RabMAb**

★★★★☆ 4 Abreviews 2 References 9 Images

Overview

| | |
|----------------------------|--|
| Product name | Anti-Cpn10 antibody [EPR4476] |
| Description | Rabbit monoclonal [EPR4476] to Cpn10 |
| Host species | Rabbit |
| Tested applications | Suitable for: WB, IP, IHC-P, ICC Unsuitable for: Flow Cyt |
| Species reactivity | Reacts with: Mouse, Rat, Human |
| Immunogen | Synthetic peptide within Human Cpn10 aa 50-150. The exact sequence is proprietary. |
| Positive control | WB: A431, Neuro-2a, A549, and MCF7 cell lysates IHC-P: Human colon and kidney tissues ICC/IF: HeLa cells |
| General notes | Our RabMAb [®] technology is a patented hybridoma-based technology for making rabbit monoclonal antibodies. For details on our patents, please refer to RabMAb[®] patents This product is a recombinant rabbit monoclonal antibody. |

Properties

| | |
|-----------------------------|--|
| Form | Liquid |
| Storage instructions | Shipped at 4°C. Store at -20°C. Stable for 12 months at -20°C. |
| Storage buffer | PBS 49%, Sodium azide 0.01%, Glycerol 50%, BSA 0.05% |
| Purity | Tissue culture supernatant |
| Clonality | Monoclonal |
| Clone number | EPR4476 |
| Isotype | IgG |

Applications

Our [Abpromise guarantee](#) covers the use of **ab108600** in the following tested applications.

The application notes include recommended starting dilutions; optimal dilutions/concentrations should be determined by the end user.

| Application | Abreviews | Notes |
|-------------|-----------|---|
| WB | ★★★★★ | 1/10000 - 1/50000. Detects a band of approximately 11 kDa (predicted molecular weight: 11 kDa). |
| IP | ★☆☆☆☆ | 1/10 - 1/100. |
| IHC-P | | 1/250 - 1/500. |
| ICC | | 1/100 - 1/250. |

Application notes Is unsuitable for Flow Cyt.

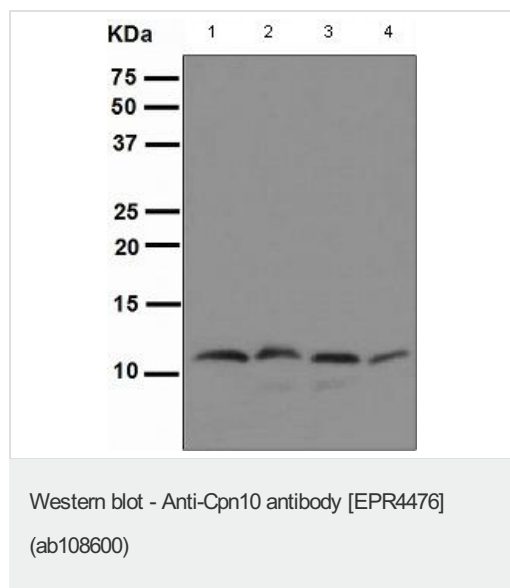
Target

Function Eukaryotic CPN10 homolog which is essential for mitochondrial protein biogenesis, together with CPN60. Binds to CPN60 in the presence of Mg-ATP and suppresses the ATPase activity of the latter.

Sequence similarities Belongs to the GroES chaperonin family.

Cellular localization Mitochondrion matrix.

Images



All lanes : Anti-Cpn10 antibody [EPR4476] (ab108600) at 1/10000 dilution

Lane 1 : A431 cell lysate

Lane 2 : Neuro-2a cell lysate

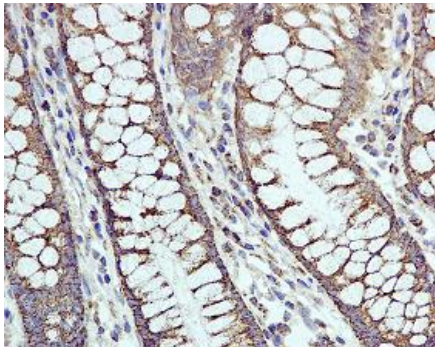
Lane 3 : A549 cell lysate

Lane 4 : MCF7 cell lysate

Lysates/proteins at 10 µg per lane.

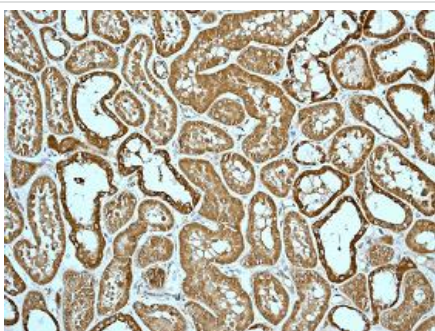
Predicted band size: 11 kDa

Observed band size: 11 kDa



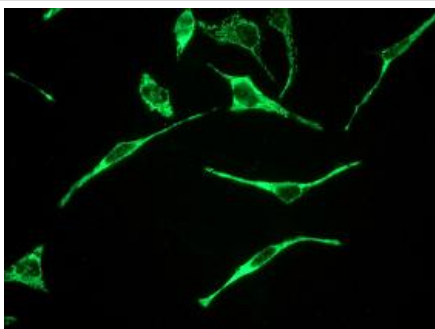
Immunohistochemical staining of Cpn10 in paraffin embedded Human colon tissue, using ab108600 at a dilution of 1/250.

Immunohistochemistry (Formalin/PFA-fixed paraffin-embedded sections) - Anti-Cpn10 antibody [EPR4476] (ab108600)



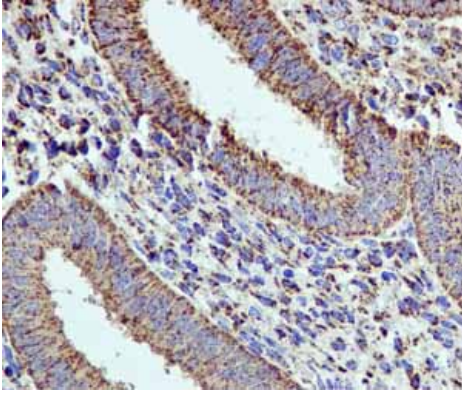
Immunohistochemical staining of Cpn10 in paraffin embedded Human kidney tissue, using ab108600 at a dilution of 1/250.

Immunohistochemistry (Formalin/PFA-fixed paraffin-embedded sections) - Anti-Cpn10 antibody [EPR4476] (ab108600)



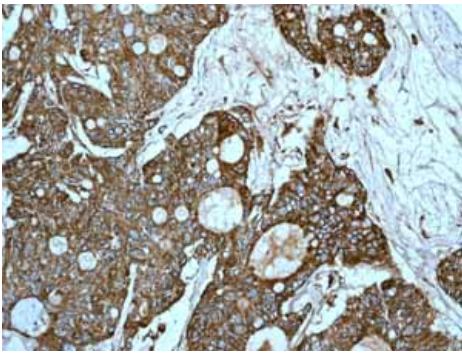
Immunofluorescent staining of Cpn10 in HeLa cells, using ab108600 at a dilution of 1/100.

Immunocytochemistry/ Immunofluorescence - Anti-Cpn10 antibody [EPR4476] (ab108600)



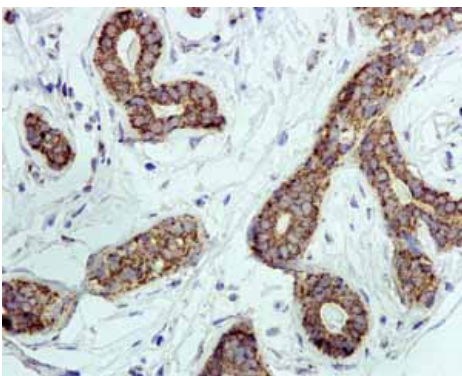
ab108600 showing positive staining in Normal uterus tissue.

Immunohistochemistry (Formalin/PFA-fixed paraffin-embedded sections) - Anti-Cpn10 antibody [EPR4476] (ab108600)



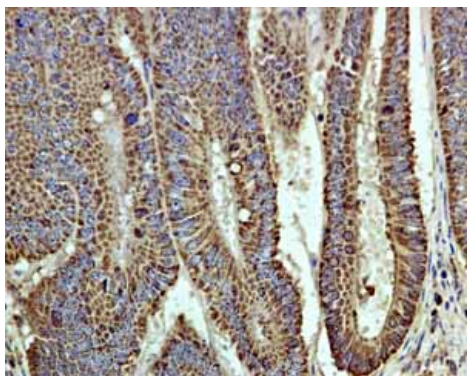
ab108600 showing positive staining in Ovarian carcinoma tissue.

Immunohistochemistry (Formalin/PFA-fixed paraffin-embedded sections) - Anti-Cpn10 antibody [EPR4476] (ab108600)



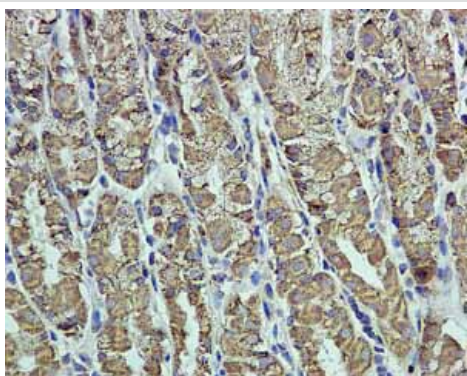
ab108600 showing positive staining in Normal breast tissue.

Immunohistochemistry (Formalin/PFA-fixed paraffin-embedded sections) - Anti-Cpn10 antibody [EPR4476] (ab108600)



ab108600 showing positive staining in
Colonic adenocarcinoma tissue.

Immunohistochemistry (Formalin/PFA-fixed paraffin-
embedded sections) - Anti-Cpn10 antibody
[EPR4476] (ab108600)



ab108600 showing positive staining in Normal
stomach tissue.

Immunohistochemistry (Formalin/PFA-fixed paraffin-
embedded sections) - Anti-Cpn10 antibody
[EPR4476] (ab108600)

Please note: All products are "FOR RESEARCH USE ONLY AND ARE NOT INTENDED FOR DIAGNOSTIC OR THERAPEUTIC USE"

Our Abpromise to you: Quality guaranteed and expert technical support

- Replacement or refund for products not performing as stated on the datasheet
- Valid for 12 months from date of delivery
- Response to your inquiry within 24 hours
- We provide support in Chinese, English, French, German, Japanese and Spanish
- Extensive multi-media technical resources to help you
- We investigate all quality concerns to ensure our products perform to the highest standards

If the product does not perform as described on this datasheet, we will offer a refund or replacement. For full details of the Abpromise, please visit <http://www.abcam.com/abpromise> or contact our technical team.

Terms and conditions

- Guarantee only valid for products bought direct from Abcam or one of our authorized distributors