

## Product datasheet

# Anti-Cyclin G2 antibody ab54901

★★★★★ 2 Abreviews 1 References 3 Images

### Overview

---

<b>Product name</b>	Anti-Cyclin G2 antibody
<b>Description</b>	Mouse monoclonal to Cyclin G2
<b>Host species</b>	Mouse
<b>Tested applications</b>	<b>Suitable for:</b> WB, ICC/IF
<b>Species reactivity</b>	<b>Reacts with:</b> Human, Recombinant fragment
<b>Immunogen</b>	Recombinant full length protein, corresponding to amino acids 1-345 of Human Cyclin G2
<b>General notes</b>	Abcam is committed to meeting high standards of ethical manufacturing and has decided to discontinue this product by June 2019 as it has been generated by the ascites method. We are sorry for any inconvenience this may cause. We would recommend antibody <a href="#">ab18</a> as a replacement.

### Properties

---

<b>Form</b>	Liquid
<b>Storage instructions</b>	Shipped at 4°C. Upon delivery aliquot and store at -20°C or -80°C. Avoid repeated freeze / thaw cycles.
<b>Storage buffer</b>	Preservative: None PBS, pH 7.2
<b>Purity</b>	Protein G purified
<b>Clonality</b>	Monoclonal
<b>Isotype</b>	IgG1
<b>Light chain type</b>	kappa

### Applications

---

Our [Abpromise guarantee](#) covers the use of **ab54901** in the following tested applications.

The application notes include recommended starting dilutions; optimal dilutions/concentrations should be determined by the end user.

Application	Abreviews	Notes
WB	★★★★★	
ICC/IF		

**Application notes**

ICC/IF: Use at a concentration of 10 µg/ml.  
 WB: Use at a concentration of 1 - 5 µg/ml.

This antibody has only been tested in WB against the recombinant fragment used as immunogen. We have no data on the detection of endogenous protein.

Not yet tested in other applications.  
 Optimal dilutions/concentrations should be determined by the end user.

**Target**

**Function** May play a role in growth regulation and in negative regulation of cell cycle progression.

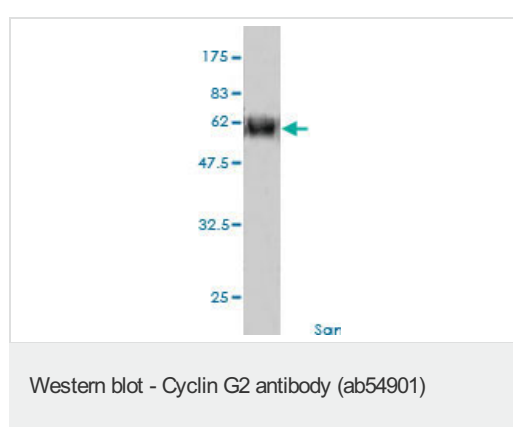
**Tissue specificity** High levels in cerebellum, thymus, spleen and prostate. Low levels in skeletal muscle.

**Sequence similarities** Belongs to the cyclin family. Cyclin G subfamily.

**Developmental stage** Expression levels increase through the cell cycle to peak in the mid/late-S phase and decrease during G2/M phase.

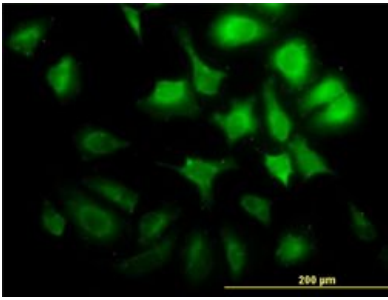
**Cellular localization** Cytoplasm.

**Images**



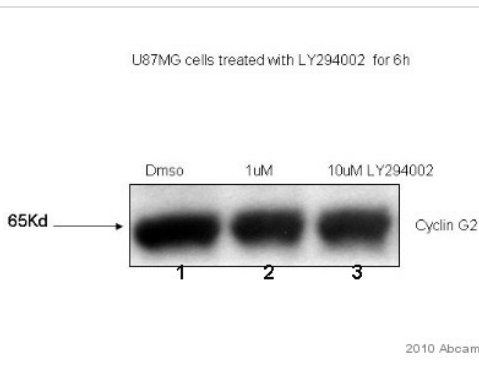
Western blot against tagged recombinant protein immunogen using ab54901 Cyclin G2 antibody at 1ug/ml. Predicted band size of recombinant, tagged immunogen is 64 kDa.

This antibody has only been tested in WB against the recombinant fragment used as immunogen. We have no data on the detection of endogenous protein.



Immunocytochemistry/ Immunofluorescence-Cyclin G2 antibody(ab54901)

ab54901 at 10 ug/ml staining Cyclin G2 in human HeLa cells by Immunocytochemistry / Immunofluorescence.



Western blot - Cyclin G2 antibody (ab54901)  
This image is courtesy of an anonymous Abreview

**All lanes :** Anti-Cyclin G2 antibody (ab54901) at 1/1000 dilution (in TBST + 5% milk for 16 hours at 4°C)

**Lane 1 :** Whole cell lysate of Human U87MG tumour cell line treated with DMSO

**Lane 2 :** Whole cell lysate of Human U87MG tumour cell line treated with 1μM LY294002 for 6 hours

**Lane 3 :** Whole cell lysate of Human U87MG tumour cell line treated with 10μM LY294002 for 6 hours

Lysates/proteins at 50 μg per lane.

### Secondary

**All lanes :** An HRP-conjugated Goat anti-mouse polyclonal at 1/10000 dilution

Developed using the ECL technique.

Performed under reducing conditions.

**Observed band size:** 64 kDa

**Exposure time:** 10 minutes

**Blocking Step :** 5% Milk for 1 hour at 23°C

## **Our Abpromise to you: Quality guaranteed and expert technical support**

---

- Replacement or refund for products not performing as stated on the datasheet
- Valid for 12 months from date of delivery
- Response to your inquiry within 24 hours
  
- We provide support in Chinese, English, French, German, Japanese and Spanish
- Extensive multi-media technical resources to help you
- We investigate all quality concerns to ensure our products perform to the highest standards

If the product does not perform as described on this datasheet, we will offer a refund or replacement. For full details of the Abpromise, please visit <http://www.abcam.com/abpromise> or contact our technical team.

## **Terms and conditions**

---

- Guarantee only valid for products bought direct from Abcam or one of our authorized distributors