

Product datasheet

Cytokeratin 4 overexpression 293T lysate (whole cell)  
ab94137

2 Images

Overview

<b>Product name</b>	Cytokeratin 4 overexpression 293T lysate (whole cell)
<b>General notes</b>	ab94137 is a 293T cell transfected lysate in which Human Cytokeratin 4 has been transiently over-expressed using a pCMV-Cytokeratin 4 plasmid. The lysate is provided in 1X Sample Buffer. <b>Note:</b> For more details about how the transfected lysate was prepared <a href="#">view preparation notes</a>
<b>Tested applications</b>	<b>Suitable for:</b> WB

Properties

<b>Form</b>	Liquid
<b>Storage instructions</b>	Shipped on dry ice. Upon delivery aliquot and store at -20°C. Avoid freeze / thaw cycles.
<b>Storage buffer</b>	pH: 6.80 Constituent: 100% 1x Sample Buffer
<b>Purity</b>	Whole Cell Lysate
<b>Background</b>	Tissue specificity: Detected in the suprabasal layer of the stratified epithelium of the esophagus, exocervix, vagina, mouth and lingual mucosa, and in cells and cell clusters in the mucosa and serous gland ducts of the esophageal submucosa (at protein level). Expressed widely in the exocervix and esophageal epithelium, with lowest levels detected in the basal cell layer. Disease: Defects in KRT4 are a cause of white sponge nevus of cannon (WSN) [MIM:193900]. WSN is a rare autosomal dominant disorder which predominantly affects non-cornified stratified squamous epithelia. Clinically, it is characterized by the presence of soft, white, and spongy plaques in the oral mucosa. The characteristic histopathologic features are epithelial thickening, parakeratosis, and vacuolization of the suprabasal layer of oral epithelial keratinocytes. Less frequently the mucous membranes of the nose, esophagus, genitalia and rectum are involved. Similarity: Belongs to the intermediate filament family.

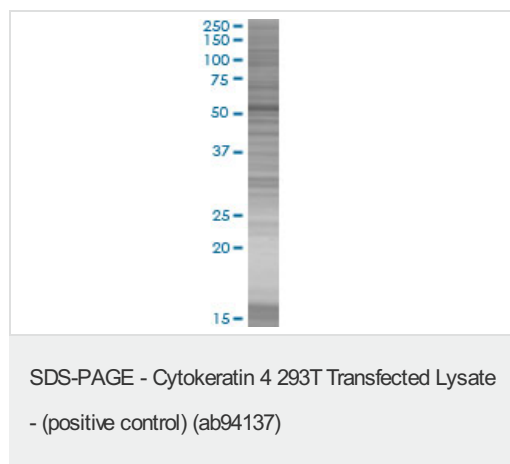
Applications

Our [Abpromise guarantee](#) covers the use of **ab94137** in the following tested applications.

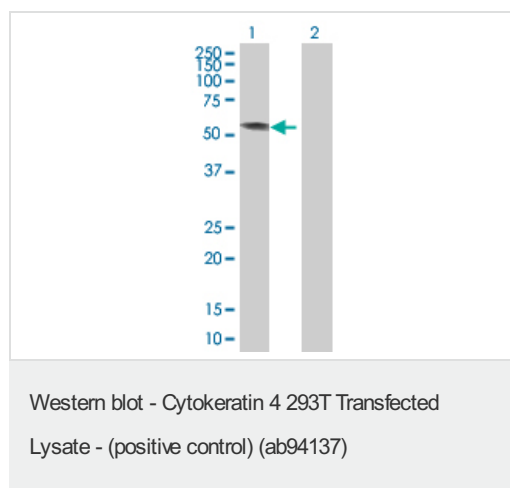
The application notes include recommended starting dilutions; optimal dilutions/concentrations should be determined by the end user.

Application	Abreviews	Notes
WB		Use at an assay dependent dilution.

## Images



ab94137 at 15µg/lane on an SDS-PAGE gel.



**All lanes** : Anti-Cytokeratin 4 antibody  
([ab55392](#)) at 1/500 dilution

**Lane 1** : Cytokeratin 4 overexpression 293T lysate (whole cell) (ab94137)

**Lane 2** : 293T non-transfected lysate

Lysates/proteins at 25 µg per lane.

### Secondary

**All lanes** : Goat Anti-mouse IgG (H and L)  
HRP conjugated at 1/2500 dilution

**Please note:** All products are "FOR RESEARCH USE ONLY AND ARE NOT INTENDED FOR DIAGNOSTIC OR THERAPEUTIC USE"

## Our Abpromise to you: Quality guaranteed and expert technical support

- Replacement or refund for products not performing as stated on the datasheet
- Valid for 12 months from date of delivery
- Response to your inquiry within 24 hours
- We provide support in Chinese, English, French, German, Japanese and Spanish
- Extensive multi-media technical resources to help you
- We investigate all quality concerns to ensure our products perform to the highest standards

If the product does not perform as described on this datasheet, we will offer a refund or replacement. For full details of the Abpromise,

please visit <http://www.abcam.com/abpromise> or contact our technical team.

## **Terms and conditions**

---

- Guarantee only valid for products bought direct from Abcam or one of our authorized distributors