

Product datasheet

Anti-DAP Kinase 2 antibody [EPR1634(2)] ab111928

Recombinant RabMAb

1 Image

Overview

Product name	Anti-DAP Kinase 2 antibody [EPR1634(2)]
Description	Rabbit monoclonal [EPR1634(2)] to DAP Kinase 2
Host species	Rabbit
Tested applications	Suitable for: WB Unsuitable for: Flow Cyt, ICC, IHC-P or IP
Species reactivity	Reacts with: Human
Immunogen	Synthetic peptide within Human DAP Kinase 2 aa 300-400 (C terminal). The exact sequence is proprietary.
Positive control	Human fetal brain, HepG2 and A431 cell lysates.
General notes	Mouse, Rat: We have preliminary internal testing data to indicate this antibody may not react with these species. Please contact us for more information.

Our RabMAb[®] technology is a patented hybridoma-based technology for making rabbit monoclonal antibodies. For details on our patents, please refer to [RabMAb[®] patents](#)

This product is a recombinant rabbit monoclonal antibody.

Properties

Form	Liquid
Storage instructions	Shipped at 4°C. Store at -20°C. Stable for 12 months at -20°C.
Storage buffer	PBS 49%, Sodium azide 0.01%, Glycerol 50%, BSA 0.05%
Purity	Tissue culture supernatant
Clonality	Monoclonal
Clone number	EPR1634(2)
Isotype	IgG

Applications

Our [Abpromise guarantee](#) covers the use of **ab111928** in the following tested applications.

The application notes include recommended starting dilutions; optimal dilutions/concentrations should be determined by the end user.

Application	Abreviews	Notes
-------------	-----------	-------

WB 1/1000 - 1/10000. Predicted molecular weight: 43 kDa.

Application notes Is unsuitable for Flow Cyt, ICC, IHC-P or IP.

Target

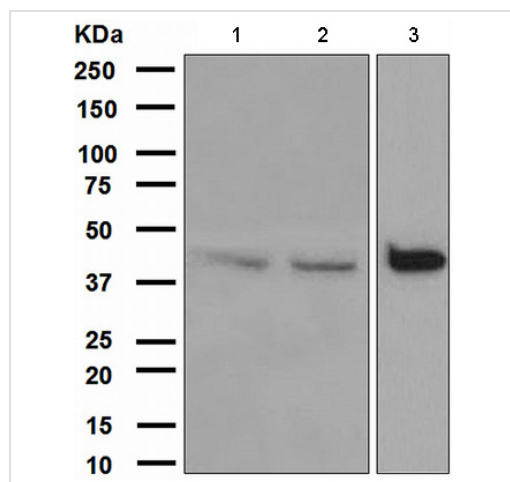
Function Calcium/calmodulin-dependent serine/threonine kinase which acts as a positive regulator of apoptosis.

Tissue specificity Ubiquitously expressed in all tissue types examined. High levels in heart, lung and skeletal muscle.

Sequence similarities Belongs to the protein kinase superfamily. CAMK Ser/Thr protein kinase family. DAP kinase subfamily.
Contains 1 protein kinase domain.

Cellular localization Cytoplasm.

Images



All lanes : Anti-DAP Kinase 2 antibody
[EPR1634(2)] (ab111928) at 1/1000 dilution

Lane 1 : Human fetal brain lysate

Lane 2 : HepG2 cell lysate

Lane 3 : A431 cell lysate

Lysates/proteins at 10 µg per lane.

Predicted band size: 43 kDa

Western blot - Anti-DAP Kinase 2 antibody
[EPR1634(2)] (ab111928)

Please note: All products are "FOR RESEARCH USE ONLY AND ARE NOT INTENDED FOR DIAGNOSTIC OR THERAPEUTIC USE"

Our Abpromise to you: Quality guaranteed and expert technical support

- Replacement or refund for products not performing as stated on the datasheet
- Valid for 12 months from date of delivery
- Response to your inquiry within 24 hours

- We provide support in Chinese, English, French, German, Japanese and Spanish
- Extensive multi-media technical resources to help you
- We investigate all quality concerns to ensure our products perform to the highest standards

If the product does not perform as described on this datasheet, we will offer a refund or replacement. For full details of the Abpromise, please visit <http://www.abcam.com/abpromise> or contact our technical team.

Terms and conditions

- Guarantee only valid for products bought direct from Abcam or one of our authorized distributors