

## Product datasheet

# Anti-DAP Kinase 2 antibody ab1382

1 Image

### Overview

|                            |  |
|----------------------------|--|
| <b>Product name</b>        | Anti-DAP Kinase 2 antibody   |
| <b>Description</b>         | Goat polyclonal to DAP Kinase 2  |
| <b>Tested applications</b> | <b>Suitable for:</b> WB  |
| <b>Species reactivity</b>  | <b>Reacts with:</b> Mouse<br><b>Predicted to work with:</b> Human  |
| <b>Immunogen</b>           | Synthetic peptide: KALHPRRRSSTS, corresponding to C terminal amino acids 359-370 of Human DAP Kinase 2.<br><a href="#">Run BLAST with ExPASy</a> <a href="#">Run BLAST with NCBI</a> |
| <b>General notes</b>       | GenBank Accession Number – NP_055141 LocusLink ID - 23604  |

### Properties

|                             |   |
|-----------------------------|---|
| <b>Form</b>                 | Liquid  |
| <b>Storage instructions</b> | Shipped at 4°C. Upon delivery aliquot and store at -20°C or -80°C. Avoid repeated freeze / thaw cycles.                               |
| <b>Storage buffer</b>       | Preservative: 0.02% Sodium Azide<br>Constituents: 0.5% BSA, 0.5mg/ml Tris, pH 7.3   |
| <b>Purity</b>               | IgG fraction  |
| <b>Purification notes</b>   | Purified from goat serum by ammonium sulphate precipitation followed by antigen affinity chromatography using the immunizing peptide. |
| <b>Clonality</b>            | Polyclonal  |
| <b>Isotype</b>              | IgG   |

### Applications

Our [Abpromise guarantee](#) covers the use of **ab1382** in the following tested applications.

The application notes include recommended starting dilutions; optimal dilutions/concentrations should be determined by the end user.

| Application | Abreviews | Notes |
|-------------|-----------|-------|
| WB          |           |       |

**Application notes**

Western Blot – Approx 40-45kDa bands seen in Mouse Brain extracts.  
Recommended for use at 1-3µg/ml

**Target****Function**

Calcium/calmodulin-dependent serine/threonine kinase which acts as a positive regulator of apoptosis.

**Tissue specificity**

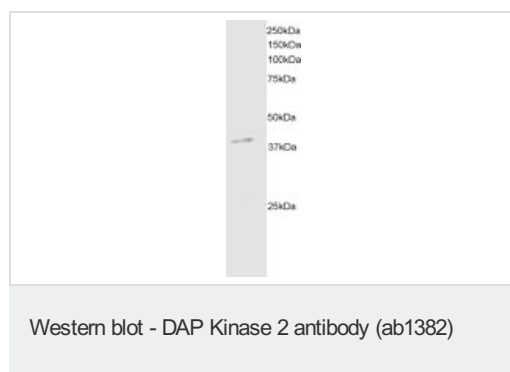
Ubiquitously expressed in all tissue types examined. High levels in heart, lung and skeletal muscle.

**Sequence similarities**

Belongs to the protein kinase superfamily. CAMK Ser/Thr protein kinase family. DAP kinase subfamily.  
Contains 1 protein kinase domain.

**Cellular localization**

Cytoplasm.

**Images**

DAPK2 staining (2µg/ml) of Mouse Brain extracts (RIPA buffer, 35µg total protein per lane). Primary incubated for 1 hour. Detected by western blot using chemiluminescence

**Please note:** All products are "FOR RESEARCH USE ONLY AND ARE NOT INTENDED FOR DIAGNOSTIC OR THERAPEUTIC USE"

**Our Abpromise to you: Quality guaranteed and expert technical support**

- Replacement or refund for products not performing as stated on the datasheet
- Valid for 12 months from date of delivery
- Response to your inquiry within 24 hours
- We provide support in Chinese, English, French, German, Japanese and Spanish
- Extensive multi-media technical resources to help you
- We investigate all quality concerns to ensure our products perform to the highest standards

If the product does not perform as described on this datasheet, we will offer a refund or replacement. For full details of the Abpromise, please visit <http://www.abcam.com/abpromise> or contact our technical team.

**Terms and conditions**

- Guarantee only valid for products bought direct from Abcam or one of our authorized distributors