


## Product datasheet

# Anti-DDAH1 antibody ab2231

★★★★☆ 3 Abreviews 12 References 3 Images

### Overview

---

<b>Product name</b>	Anti-DDAH1 antibody
<b>Description</b>	Goat polyclonal to DDAH1
<b>Host species</b>	Goat
<b>Tested applications</b>	<b>Suitable for:</b> IHC-P, ICC/IF, IHC-Fr, WB
<b>Species reactivity</b>	<b>Reacts with:</b> Rat, Human <b>Predicted to work with:</b> Cow 
<b>Immunogen</b>	Synthetic peptide: TCCSVLINKKVDS , corresponding to C terminal amino acids 272-284 of Human DDAH1. <a href="#">Run BLAST with</a> <a href="#">Run BLAST with</a>

### Properties

---

<b>Form</b>	Liquid
<b>Storage instructions</b>	Shipped at 4°C. Upon delivery aliquot and store at -20°C or -80°C. Avoid repeated freeze / thaw cycles.
<b>Storage buffer</b>	Preservative: 0.02% Sodium Azide Constituents: 0.5% BSA, Tris buffered saline, pH 7.3
<b>Purity</b>	Immunogen affinity purified
<b>Purification notes</b>	Purified from goat serum by ammonium sulphate precipitation followed by antigen affinity chromatography using the immunizing peptide.
<b>Clonality</b>	Polyclonal
<b>Isotype</b>	IgG

### Applications

---

Our [Abpromise guarantee](#) covers the use of **ab2231** in the following tested applications.

The application notes include recommended starting dilutions; optimal dilutions/concentrations should be determined by the end user.

Application	Abreviews	Notes
IHC-P		Use a concentration of 10 µg/ml. Perform heat mediated antigen retrieval with citrate buffer pH 6 before commencing with IHC staining protocol.
ICC/IF		Use a concentration of 5 µg/ml.
IHC-Fr		Use at an assay dependent concentration. PubMed: 24663083
WB	★★★★☆	Use a concentration of 0.1 - 0.3 µg/ml. Detects a band of approximately 35 kDa (predicted molecular weight: 31 kDa). Can be blocked with <a href="#">Human DDAH1 peptide (ab99047)</a> .

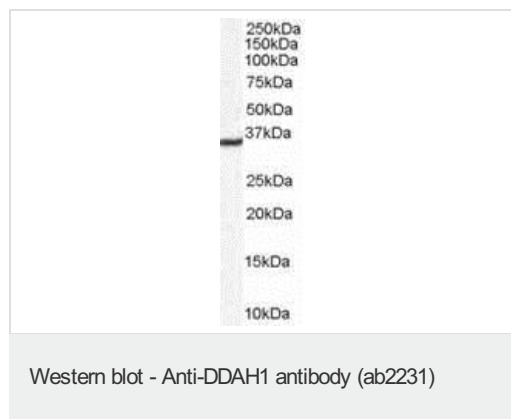
## Target

**Function** Hydrolyzes N(G),N(G)-dimethyl-L-arginine (ADMA) and N(G)-monomethyl-L-arginine (MMA) which act as inhibitors of NOS. Has therefore a role in the regulation of nitric oxide generation.

**Tissue specificity** Detected in brain, liver, kidney and pancreas, and at low levels in skeletal muscle.

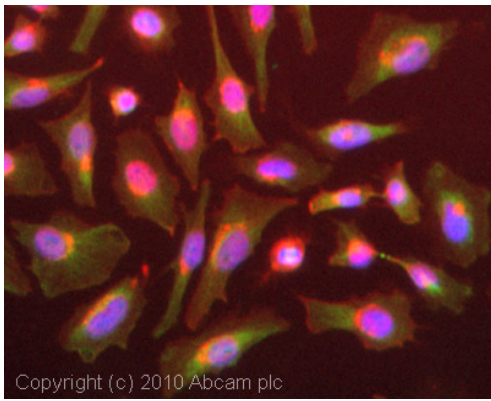
**Sequence similarities** Belongs to the DDAH family.

## Images



Anti-DDAH1 antibody (ab2231) at 0.100000001490116 µg/ml + Human kidney lysate at 35 µg

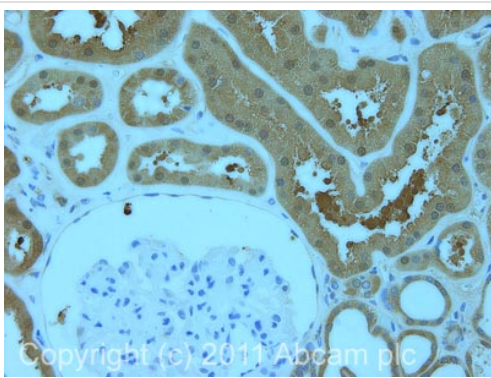
**Predicted band size: 31 kDa**



Copyright (c) 2010 Abcam plc

Immunocytochemistry/ Immunofluorescence - Anti-DDAH1 antibody (ab2231)

ICC/IF image of ab2231 stained HeLa cells. The cells were 4% formaldehyde fixed (10 min) and then incubated in 1%BSA / 10% normal donkey serum / 0.3M glycine in 0.1% PBS-Tween for 1h to permeabilise the cells and block non-specific protein-protein interactions. The cells were then incubated with the antibody (ab2231, 5µg/ml) overnight at +4°C. The secondary antibody (green) was Alexa Fluor® 488 donkey anti-goat IgG (H+L) used at a 1/1000 dilution for 1h. Alexa Fluor® 594 WGA was used to label plasma membranes (red) at a 1/200 dilution for 1h. DAPI was used to stain the cell nuclei (blue) at a concentration of 1.43µM.



Copyright (c) 2011 Abcam plc

Immunohistochemistry (Formalin/PFA-fixed paraffin-embedded sections) - Anti-DDAH1 antibody (ab2231)

IHC image of ab2231 staining in human normal kidney formalin fixed paraffin embedded tissue section, performed on a Leica Bond™ system using the standard protocol B. The section was pre-treated using heat mediated antigen retrieval with sodium citrate buffer (pH6, epitope retrieval solution 1) for 20 mins. The section was then incubated with ab2231, 10µg/ml, for 15 mins at room temperature and detected using an HRP conjugated compact polymer system. DAB was used as the chromogen. The section was then counterstained with haematoxylin and mounted with DPX.

For other IHC staining systems (automated and non-automated) customers should optimize variable parameters such as antigen retrieval conditions, primary antibody concentration and antibody incubation times.

**Please note:** All products are "FOR RESEARCH USE ONLY AND ARE NOT INTENDED FOR DIAGNOSTIC OR THERAPEUTIC USE"

**Our Abpromise to you: Quality guaranteed and expert technical support**

- Replacement or refund for products not performing as stated on the datasheet
- Valid for 12 months from date of delivery
- Response to your inquiry within 24 hours
  
- We provide support in Chinese, English, French, German, Japanese and Spanish
- Extensive multi-media technical resources to help you
- We investigate all quality concerns to ensure our products perform to the highest standards

If the product does not perform as described on this datasheet, we will offer a refund or replacement. For full details of the Abpromise, please visit <http://www.abcam.com/abpromise> or contact our technical team.

### **Terms and conditions**

---

- Guarantee only valid for products bought direct from Abcam or one of our authorized distributors