

Product datasheet

Anti-DKKL1 antibody ab38588

1 References 2 Images

Overview

---

<b>Product name</b>	Anti-DKKL1 antibody
<b>Description</b>	Rabbit polyclonal to DKKL1
<b>Host species</b>	Rabbit
<b>Specificity</b>	Targets C terminus of DKKL1.
<b>Tested applications</b>	<b>Suitable for:</b> ELISA, WB, IHC-P
<b>Species reactivity</b>	<b>Reacts with:</b> Mouse, Human
<b>Immunogen</b>	Synthetic peptide (10-30 aa in length) conjugated to KLH, from the last 50 C terminal amino acids of DKKL1 (Human)
<b>Positive control</b>	Mouse testis tissue lysate; Human breast carcinoma

Properties

---

<b>Form</b>	Liquid
<b>Storage instructions</b>	Shipped at 4°C. Store at +4°C short term (1-2 weeks). Upon delivery aliquot. Store at -20°C or -80°C. Avoid freeze / thaw cycle.
<b>Storage buffer</b>	Preservative: 0.09% Sodium Azide Constituents: PBS
<b>Purity</b>	Protein G purified
<b>Purification notes</b>	This antibody was eluted out with both high and low pH buffers and neutralized immediately after elution then followed by dialysis against PBS.
<b>Clonality</b>	Polyclonal
<b>Isotype</b>	IgG

Applications

---

Our [Abpromise guarantee](#) covers the use of **ab38588** in the following tested applications.

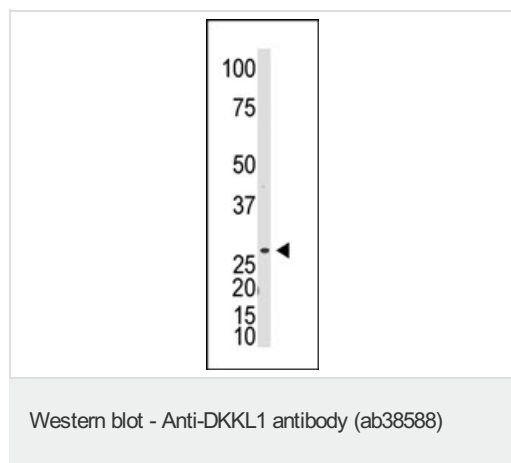
The application notes include recommended starting dilutions; optimal dilutions/concentrations should be determined by the end user.

Application	Abreviews	Notes
ELISA		1/1000.
WB		1/100 - 1/500. Detects a band of approximately 27 kDa (predicted molecular weight: 27 kDa).
IHC-P		1/50 - 1/100.

## Target

<b>Sequence similarities</b>	To the N-terminal section of DKK-3.
<b>Post-translational modifications</b>	N-glycosylated.
<b>Cellular localization</b>	Secreted.

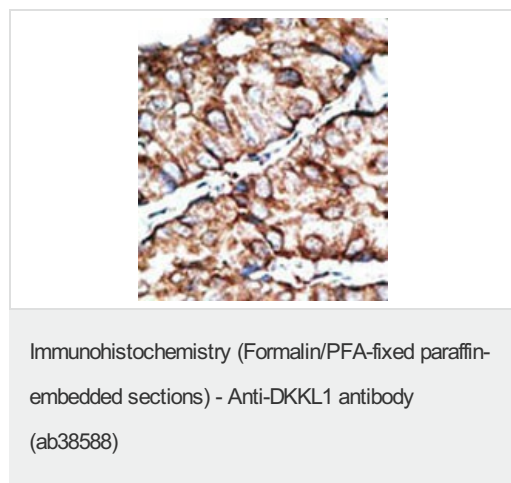
## Images



Anti-DKKL1 antibody (ab38588) + Mouse testis tissue lysate

**Predicted band size:** 27 kDa

**Observed band size:** 27 kDa



Formalin-fixed paraffin-embedded human breast cancer tissue with DKKL1 antibody ab38588, which was peroxidase-conjugated to the secondary antibody, followed by AEC staining.

**Please note:** All products are "FOR RESEARCH USE ONLY AND ARE NOT INTENDED FOR DIAGNOSTIC OR THERAPEUTIC USE"

## **Our Abpromise to you: Quality guaranteed and expert technical support**

---

- Replacement or refund for products not performing as stated on the datasheet
- Valid for 12 months from date of delivery
- Response to your inquiry within 24 hours
  
- We provide support in Chinese, English, French, German, Japanese and Spanish
- Extensive multi-media technical resources to help you
- We investigate all quality concerns to ensure our products perform to the highest standards

If the product does not perform as described on this datasheet, we will offer a refund or replacement. For full details of the Abpromise, please visit <http://www.abcam.com/abpromise> or contact our technical team.

## **Terms and conditions**

---

- Guarantee only valid for products bought direct from Abcam or one of our authorized distributors