

Product datasheet

Anti-DOK2 antibody ab37832

2 Images

Overview

| | |
|----------------------------|---|
| Product name | Anti-DOK2 antibody |
| Description | Rabbit polyclonal to DOK2 |
| Host species | Rabbit |
| Tested applications | Suitable for: WB, ELISA, IHC-P |
| Species reactivity | Reacts with: Human |
| Immunogen | Synthetic peptide: GWQPGT EYDNVVLKKG PK conjugated to KLH, corresponding to amino acids 395-412 of Human DOK2. Run BLAST with Run BLAST with |
| Positive control | CEM cell lysate, Human breast carcinoma tissue. |

Properties

| | |
|-----------------------------|--|
| Form | Liquid |
| Storage instructions | Shipped at 4°C. Store at +4°C short term (1-2 weeks). Upon delivery aliquot. Store at -20°C long term. |
| Storage buffer | Preservative: 0.09% Sodium Azide Constituents: PBS |
| Purity | Protein G purified |
| Clonality | Polyclonal |
| Isotype | IgG |

Applications

Our [Abpromise guarantee](#) covers the use of **ab37832** in the following tested applications.

The application notes include recommended starting dilutions; optimal dilutions/concentrations should be determined by the end user.

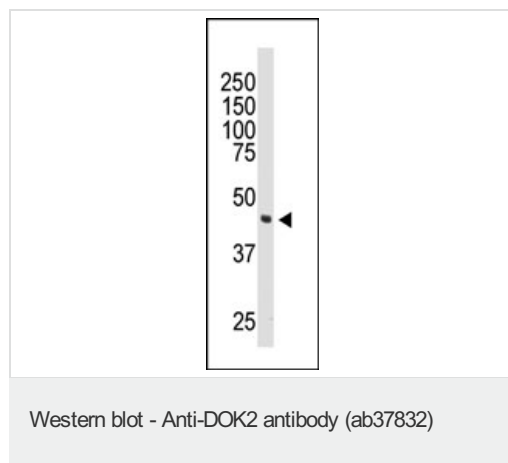
| Application | Abreviews | Notes |
|-------------|-----------|---|
| WB | | 1/100 - 1/500. Detects a band of approximately 45 kDa (predicted molecular weight: 45 kDa). |

| Application | Abreviews | Notes |
|-------------|-----------|---------------|
| ELISA | | 1/1000. |
| IHC-P | | 1/50 - 1/100. |

Target

| | |
|---|---|
| Function | DOK proteins are enzymatically inert adaptor or scaffolding proteins. They provide a docking platform for the assembly of multimolecular signaling complexes. DOK2 may modulate the cellular proliferation induced by IL-4, as well as IL-2 and IL-3. May be involved in modulating Bcr-Abl signaling. Attenuates EGF-stimulated MAP kinase activation. |
| Tissue specificity | Highly expressed in peripheral blood leukocytes, lymph nodes and spleen. Lower expression in thymus, bone marrow and fetal liver. |
| Sequence similarities | Belongs to the DOK family. Type A subfamily. Contains 1 IRS-type PTB domain. Contains 1 PH domain. |
| Domain | PTB domain mediates receptor interaction. |
| Post-translational modifications | On immunoreceptor stimulation, phosphorylated on C-terminal tyrosine residues. Phosphorylation on Tyr-345 is required for binding to the SH2 domain of NCK. Phosphorylation on both Tyr-271 and Tyr-299 is required for interaction with RASGAP. |

Images



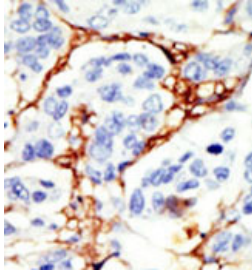
Anti-DOK2 antibody (ab37832) at 1/100 dilution + CEM cell lysate

Secondary

HRP-anti-rabbit

Predicted band size: 45 kDa

Observed band size: 45 kDa



Immunohistochemistry (Formalin/PFA-fixed paraffin-embedded sections) - Anti-DOK2 antibody (ab37832)

ab37832, at 1/50 dilution, staining DOK2 in Human breast carcinoma tissue by Immunohistochemistry, Formalin fixed, Paraffin embedded tissue. ab37832 was peroxidase-conjugated to the secondary antibody, followed by AEC staining.

Please note: All products are "FOR RESEARCH USE ONLY AND ARE NOT INTENDED FOR DIAGNOSTIC OR THERAPEUTIC USE"

Our Abpromise to you: Quality guaranteed and expert technical support

- Replacement or refund for products not performing as stated on the datasheet
- Valid for 12 months from date of delivery
- Response to your inquiry within 24 hours
- We provide support in Chinese, English, French, German, Japanese and Spanish
- Extensive multi-media technical resources to help you
- We investigate all quality concerns to ensure our products perform to the highest standards

If the product does not perform as described on this datasheet, we will offer a refund or replacement. For full details of the Abpromise, please visit <http://www.abcam.com/abpromise> or contact our technical team.

Terms and conditions

- Guarantee only valid for products bought direct from Abcam or one of our authorized distributors