

Product datasheet

Anti-DOLK antibody ab93609

1 Image

Overview

| | |
|----------------------------|--|
| Product name | Anti-DOLK antibody |
| Description | Rabbit polyclonal to DOLK |
| Tested applications | Suitable for: WB, ELISA |
| Species reactivity | Reacts with: Human |
| Immunogen | KLH conjugated synthetic peptide selected from the center region of Human DOLK (NP_055723.1) |
| Positive control | 293 cell lysate |

Properties

| | |
|-----------------------------|--|
| Form | Liquid |
| Storage instructions | Shipped at 4°C. Upon delivery aliquot and store at -20°C. Avoid freeze / thaw cycles. |
| Storage buffer | Preservative: 0.09% Sodium Azide Constituents: PBS |
| Purity | Immunogen affinity purified |
| Purification notes | This antibody is purified through a protein A column, followed by peptide affinity purification. |
| Clonality | Polyclonal |
| Isotype | IgG |

Applications

Our [Abpromise guarantee](#) covers the use of **ab93609** in the following tested applications.

The application notes include recommended starting dilutions; optimal dilutions/concentrations should be determined by the end user.

| Application | Abreviews | Notes |
|-------------|-----------|-------|
| WB | | |
| ELISA | | |

| | |
|--------------------------|--|
| Application notes | ELISA: 1/1000. WB: 1/100 - 1/500. Predicted molecular weight: 59 kDa. |
|--------------------------|--|

Not yet tested in other applications.

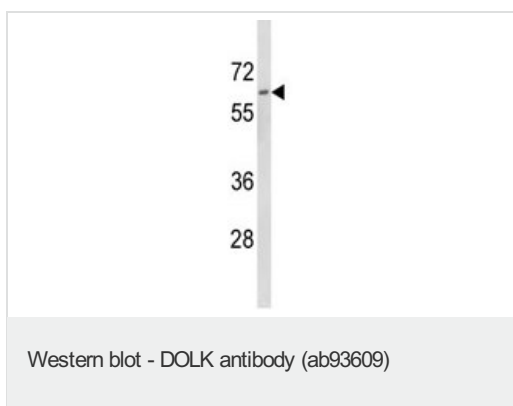
Optimal dilutions/concentrations should be determined by the end user.

Target

Relevance DOLK belongs to the polyprenol kinase family. Defects in DOLK are the cause of congenital disorder of glycosylation type 1M (CDG1M), also known as dolichol kinase deficiency.

Cellular localization Endoplasmic reticulum integral membrane protein

Anti-DOLK antibody images



Anti-DOLK antibody (ab93609) at 1/100 dilution + 293 cell lysate at 35 µg

Predicted band size : 59 kDa

Please note: All products are "FOR RESEARCH USE ONLY AND ARE NOT INTENDED FOR DIAGNOSTIC OR THERAPEUTIC USE"

Our Abpromise to you: Quality guaranteed and expert technical support

- Replacement or refund for products not performing as stated on the datasheet
- Valid for 12 months from date of delivery
- Response to your inquiry within 24 hours
- We provide support in Chinese, English, French, German, Japanese and Spanish
- Extensive multi-media technical resources to help you
- We investigate all quality concerns to ensure our products perform to the highest standards

If the product does not perform as described on this datasheet, we will offer a refund or replacement. For full details of the Abpromise, please visit <http://www.abcam.com/abpromise> or contact our technical team.

Terms and conditions

- Guarantee only valid for products bought direct from Abcam or one of our authorized distributors