


Product datasheet

Anti-DPP10 antibody ab31292

1 Image

Overview

Product name	Anti-DPP10 antibody
Description	Goat polyclonal to DPP10
Specificity	ab31292 recognises Dipeptidylpeptidase 10.
Tested applications	Suitable for: WB, ELISA
Species reactivity	Reacts with: Human Predicted to work with: Chicken, Cow, Dog, Chimpanzee 
Immunogen	Synthetic peptide: C-DEGHNVSEKSKYHL , corresponding to Internal sequence amino acids 765-779 of Human DPP10 Run BLAST with Run BLAST with
Positive control	Human Bone Marrow lysate

Properties

Form	Liquid
Storage instructions	Shipped at 4°C. Upon delivery aliquot and store at -20°C. Avoid freeze / thaw cycles.
Storage buffer	Preservative: 0.02% Sodium Azide Constituents: 0.5% BSA, Tris buffered saline. pH 7.3
Purity	Immunogen affinity purified
Purification notes	Purified from goat serum by ammonium sulphate precipitation followed by antigen affinity chromatography using the immunizing peptide.
Clonality	Polyclonal
Isotype	IgG

Applications

Our [Abpromise guarantee](#) covers the use of **ab31292** in the following tested applications.

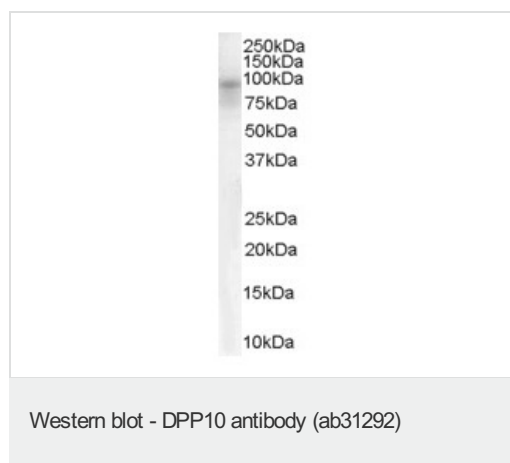
The application notes include recommended starting dilutions; optimal dilutions/concentrations should be determined by the end user.

Application	Abreviews	Notes
WB		Use a concentration of 0.1 - 0.3 µg/ml. Detects a band of approximately 90 kDa (predicted molecular weight: 90 kDa).
ELISA		1/32000.

Target

Function	Has no dipeptidyl aminopeptidase activity. May modulate cell surface expression and activity of the potassium channels KCND1 and KCND2.
Tissue specificity	Found in serum, T-cells and brain (at protein level). Expressed in brain, pancreas, spinal cord and adrenal glands.
Involvement in disease	Genetic variations in DPP10 are associated with susceptibility to asthma (ASTHMA) [MIM:600807]. The most common chronic disease affecting children and young adults. It is a complex genetic disorder with a heterogeneous phenotype, largely attributed to the interactions among many genes and between these genes and the environment. It is characterized by recurrent attacks of paroxysmal dyspnea, with weezing due to spasmodic contraction of the bronchi.
Sequence similarities	Belongs to the peptidase S9B family. DPPIV subfamily.
Post-translational modifications	N-glycosylated.
Cellular localization	Membrane.

Images



Anti-DPP10 antibody (ab31292) at 0.1 µg/ml
(incubation time: 1 hour) + Human Bone Marrow lysate (35µg protein in RIPA buffer)
Developed using the ECL technique

Predicted band size : 90 kDa

Observed band size : 90 kDa

Please note: All products are "FOR RESEARCH USE ONLY AND ARE NOT INTENDED FOR DIAGNOSTIC OR THERAPEUTIC USE"

Our Abpromise to you: Quality guaranteed and expert technical support

- Replacement or refund for products not performing as stated on the datasheet
- Valid for 12 months from date of delivery

- Response to your inquiry within 24 hours
- We provide support in Chinese, English, French, German, Japanese and Spanish
- Extensive multi-media technical resources to help you
- We investigate all quality concerns to ensure our products perform to the highest standards

If the product does not perform as described on this datasheet, we will offer a refund or replacement. For full details of the Abpromise, please visit <http://www.abcam.com/abpromise> or contact our technical team.

Terms and conditions

- Guarantee only valid for products bought direct from Abcam or one of our authorized distributors