


Product datasheet

Anti-DUSP1 antibody ab1351

★★★★☆ 5 Abreviews 4 References 2 Images

Overview

Product name	Anti-DUSP1 antibody
Description	Goat polyclonal to DUSP1
Host species	Goat
Tested applications	Suitable for: WB, IHC-P
Species reactivity	Reacts with: Mouse, Rat, Human Predicted to work with: Cow, Dog 
Immunogen	Synthetic peptide corresponding to Human DUSP1 aa 355-367 (C terminal). Sequence: SYLQSPITTSPSC Database link: P28562

 [Run BLAST with](#)

 [Run BLAST with](#)

Properties

Form	Liquid
Storage instructions	Shipped at 4°C. Upon delivery aliquot and store at -20°C or -80°C. Avoid repeated freeze / thaw cycles.
Storage buffer	Preservative: 0.02% Sodium Azide Constituents: 0.5% BSA, Tris buffered saline, pH 7.3
Purity	Immunogen affinity purified
Purification notes	Purified from goat serum by ammonium sulphate precipitation followed by antigen affinity chromatography using the immunizing peptide.
Clonality	Polyclonal
Isotype	IgG

Applications

Our [Abpromise guarantee](#) covers the use of **ab1351** in the following tested applications.

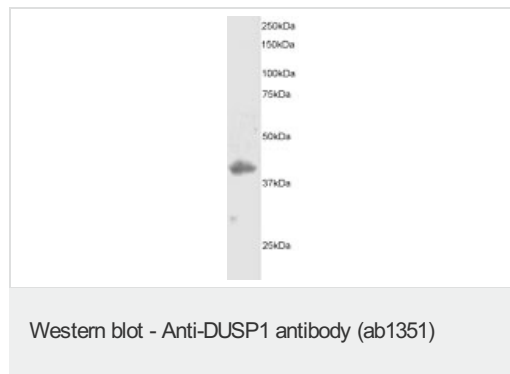
The application notes include recommended starting dilutions; optimal dilutions/concentrations should be determined by the end user.

Application	Abreviews	Notes
WB	★★★★☆	Use a concentration of 0.3 - 1 µg/ml.
IHC-P		Use a concentration of 3 - 5 µg/ml. Perform heat mediated antigen retrieval before commencing with IHC staining protocol. Most of the commercially available BSA and dry milk are contaminated with bovine IgG (even some of the higher purity grades of BSA); this might cause high background problems when labelled anti-goat secondary is used. The secondary might cross-react with bovine IgG since goat is closely related to cow.

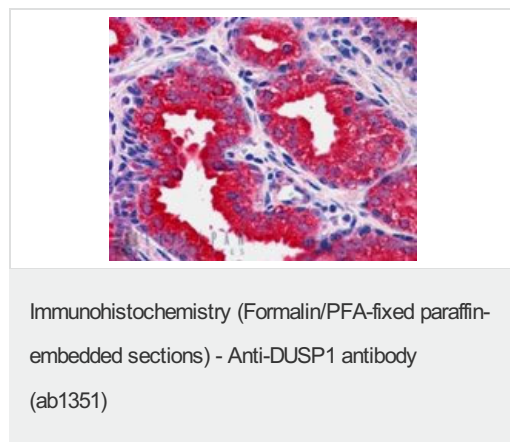
Target

Function	Dual specificity phosphatase that dephosphorylates MAP kinase ERK2 on both 'Thr-183' and 'Tyr-185'.
Tissue specificity	Expressed at high levels in the lung, liver placenta and pancreas. Moderate levels seen in the heart and skeletal muscle. Lower levels found in the brain and kidney.
Sequence similarities	Belongs to the protein-tyrosine phosphatase family. Non-receptor class dual specificity subfamily. Contains 1 rhodanese domain. Contains 1 tyrosine-protein phosphatase domain.

Images



Endogenous DUSP1 staining (2µg/ml) of HeLa lysate (RIPA buffer, 35µg total protein per lane). Primary incubated for 1 hour. Detected by western blot using chemiluminescence Endogenous DUSP1 staining (2µg/ml) of HeLa lysate (RIPA buffer, 35µg total protein per lane). Primary incubated for 1 hour. Detected by western blot using chemiluminescence



ab1351 (3.8 µg/ml) staining DUSP1 in paraffin-embedded Human prostate tissue. Steam antigen retrieval was performed with citrate buffer (pH 6).

Our Abpromise to you: Quality guaranteed and expert technical support

- Replacement or refund for products not performing as stated on the datasheet
- Valid for 12 months from date of delivery
- Response to your inquiry within 24 hours

- We provide support in Chinese, English, French, German, Japanese and Spanish
- Extensive multi-media technical resources to help you
- We investigate all quality concerns to ensure our products perform to the highest standards

If the product does not perform as described on this datasheet, we will offer a refund or replacement. For full details of the Abpromise, please visit <http://www.abcam.com/abpromise> or contact our technical team.

Terms and conditions

- Guarantee only valid for products bought direct from Abcam or one of our authorized distributors