

Product datasheet

Anti-DUSP10 antibody - Carboxyterminal end ab71532

1 References 2 Images

Overview

<b>Product name</b>	Anti-DUSP10 antibody - Carboxyterminal end
<b>Description</b>	Rabbit polyclonal to DUSP10 - Carboxyterminal end
<b>Tested applications</b>	<b>Suitable for:</b> WB, ELISA, IHC-P
<b>Species reactivity</b>	<b>Reacts with:</b> Human
<b>Immunogen</b>	KLH-conjugated synthetic peptide from the C-terminal region of human DUSP10.
<b>Positive control</b>	Human breast carcinoma tissue; CEM cell line lysate.

Properties

<b>Form</b>	Liquid
<b>Storage instructions</b>	Shipped at 4°C. Upon delivery aliquot and store at -20°C. Avoid freeze / thaw cycles.
<b>Storage buffer</b>	Preservative: 0.09% Sodium Azide Constituents: PBS
<b>Purity</b>	Protein G purified
<b>Purification notes</b>	The antibody was purified through a protein G column, eluted with high and low pH buffers and neutralized immediately, followed by dialysis against PBS.
<b>Clonality</b>	Polyclonal
<b>Isotype</b>	IgG

Applications

Our [Abpromise guarantee](#) covers the use of **ab71532** in the following tested applications.

The application notes include recommended starting dilutions; optimal dilutions/concentrations should be determined by the end user.

Application	Abreviews	Notes
WB		1/100 - 1/500. Predicted molecular weight: 53 kDa.
ELISA		1/1000.
IHC-P		1/50 - 1/100.

## Target

---

### Function

Involved in the inactivation of MAP kinases. Has a specificity for the MAPK11/MAPK12/MAPK13/MAPK14 subfamily.

### Sequence similarities

Belongs to the protein-tyrosine phosphatase family. Non-receptor class dual specificity subfamily.

Contains 1 rhodanese domain.

Contains 1 tyrosine-protein phosphatase domain.

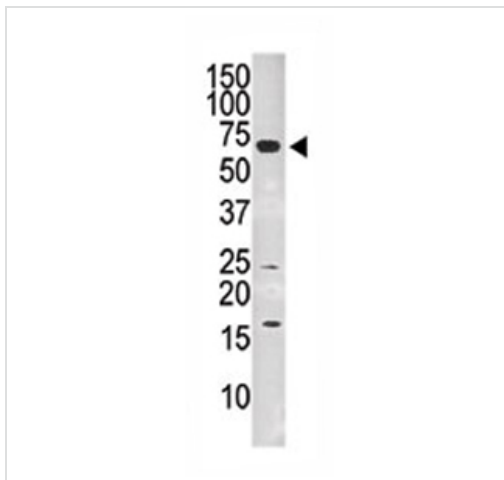
### Cellular localization

Cytoplasm. Nucleus.

---

## Images

---



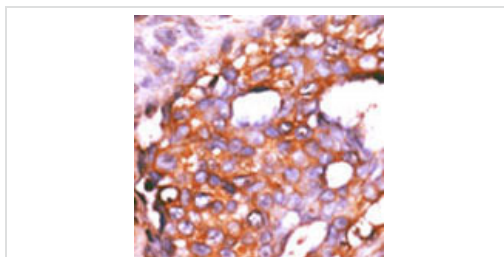
Anti-DUSP10 antibody - Carboxyterminal end  
(ab71532) at 1/60 dilution + CEM cell line  
lysate at 35 µg

**Predicted band size :** 53 kDa

**Observed band size :** 70 kDa

**Additional bands at :** 17 kDa, 25 kDa. We  
are unsure as to the identity of these extra  
bands.

Western blot - DUSP10 antibody - Carboxyterminal  
end (ab71532)



Analysis of DUSP10 expression on formalin-  
fixed, paraffin-embedded human breast  
carcinoma tissue using ab71532 at 1:50  
dilution (peroxidase-conjugated secondary  
antibody, AEC staining).

Immunohistochemistry (Formalin/PFA-fixed paraffin-  
embedded sections) - DUSP10 antibody -  
Carboxyterminal end (ab71532)

**Please note:** All products are "FOR RESEARCH USE ONLY AND ARE NOT INTENDED FOR DIAGNOSTIC OR THERAPEUTIC USE"

**Our Abpromise to you: Quality guaranteed and expert technical support**

---

- Replacement or refund for products not performing as stated on the datasheet
- Valid for 12 months from date of delivery
- Response to your inquiry within 24 hours
  
- We provide support in Chinese, English, French, German, Japanese and Spanish
- Extensive multi-media technical resources to help you
- We investigate all quality concerns to ensure our products perform to the highest standards

If the product does not perform as described on this datasheet, we will offer a refund or replacement. For full details of the Abpromise, please visit <http://www.abcam.com/abpromise> or contact our technical team.

### **Terms and conditions**

---

- Guarantee only valid for products bought direct from Abcam or one of our authorized distributors