

Product datasheet

Anti-ECM29 antibody ab28666

[1 References](#) [3 Images](#)

Overview

Product name	Anti-ECM29 antibody
Description	Rabbit polyclonal to ECM29
Host species	Rabbit
Tested applications	Suitable for: ICC/IF, WB
Species reactivity	Reacts with: Mouse, Human
Immunogen	Synthetic peptide corresponding to Human ECM29 aa 1821-1839 (C terminal). Sequence: RPELQEKAALLKKTLENLE Run BLAST with Run BLAST with
Positive control	WB: HeLa cell lysate. ICC/IF: HeLa cells.

Properties

Form	Liquid
Storage instructions	Shipped at 4°C. Upon delivery aliquot and store at -20°C. Avoid freeze / thaw cycles.
Storage buffer	Preservative: 0.05% Sodium Azide Constituents: Whole serum
Purity	Whole antiserum
Clonality	Polyclonal
Isotype	IgG

Applications

Our [Abpromise guarantee](#) covers the use of **ab28666** in the following tested applications.

The application notes include recommended starting dilutions; optimal dilutions/concentrations should be determined by the end user.

Application	Abreviews	Notes
ICC/IF		1/200.
WB		1/200. Detects a band of approximately 205 kDa (predicted molecular weight: 205 kDa).

Application	Abreviews	Notes
-------------	-----------	-------

Target

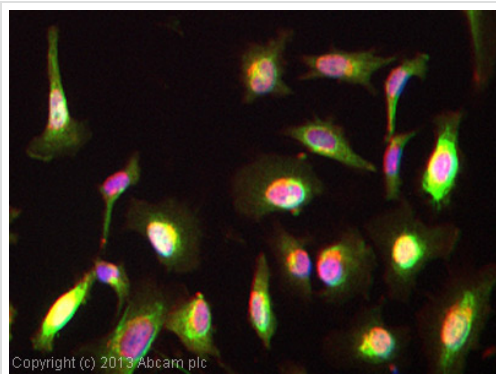
Relevance

ECM29 appears to be one of three proteins which associate significantly with proteasomes. ECM29 has been shown to enhance the stability of the proteasome. ECM29 deletion has been shown to produce 26S proteasomes which dissociated in the absence of ATP. It was thus suggested that ECM29 tethers the regulatory complex to the proteasome.

Cellular localization

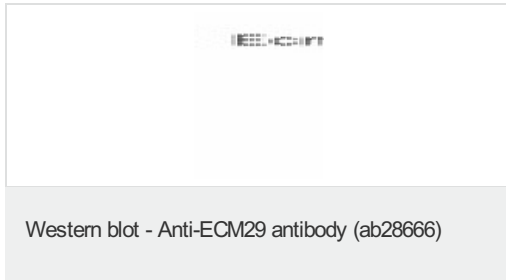
Endoplasmic reticulum. Endoplasmic reticulum-Golgi intermediate compartment. Endosome. Cytoplasm › cytoskeleton › centrosome. Nucleus.

Images



Immunocytochemistry/ Immunofluorescence - Anti-ECM29 antibody (ab28666)

ab28666 stained HeLa cells. The cells were 4% formaldehyde fixed for 10 minutes at room temperature and then incubated in 1%BSA / 10% normal goat serum / 0.3M glycine in 0.1% PBS-Tween for 1 hour at room temperature to permeabilise the cells and block non-specific protein-protein interactions. The cells were then incubated with the antibody (ab28666 at 1µg/ml) overnight at +4°C. The secondary antibody (pseudo-colored green) was Goat Anti-Rabbit IgG H&L (Alexa Fluor® 488) preadsorbed ([ab150081](#)) used at a 1/1000 dilution for 1 hour at room temperature. Alexa Fluor® 594 WGA was used to label plasma membranes (pseudo-colored red) at a 1/200 dilution for 1 hour at room temperature. DAPI was used to stain the cell nuclei (pseudo-colored blue) at a concentration of 1.43µM for 1 hour at room temperature.

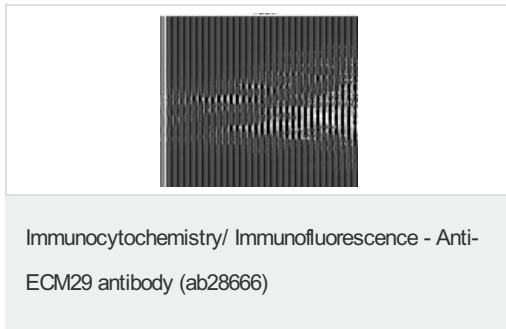


Anti-ECM29 antibody (ab28666) (dilution of 1/200) + HeLa cell extract

Predicted band size: 205 kDa

Observed band size: 205 kDa

Detection of ECM29 in HeLa cells.



Immunofluorescent staining of Ecm29 in HeLa cells using ab28666 (1/200 dilution).

Please note: All products are "FOR RESEARCH USE ONLY AND ARE NOT INTENDED FOR DIAGNOSTIC OR THERAPEUTIC USE"

Our Abpromise to you: Quality guaranteed and expert technical support

- Replacement or refund for products not performing as stated on the datasheet
- Valid for 12 months from date of delivery
- Response to your inquiry within 24 hours
- We provide support in Chinese, English, French, German, Japanese and Spanish
- Extensive multi-media technical resources to help you
- We investigate all quality concerns to ensure our products perform to the highest standards

If the product does not perform as described on this datasheet, we will offer a refund or replacement. For full details of the Abpromise, please visit <http://www.abcam.com/abpromise> or contact our technical team.

Terms and conditions

- Guarantee only valid for products bought direct from Abcam or one of our authorized distributors